

Time : 3 hrs

MM : 80

Q1. Choose the correct answer and write it in the answer sheet : (10x1=10)

- (a) A set of characters that represent a valid value.
- (i) Record                      (ii) Data  
(iii) Field                      (iv) Table
- (b) A device that connects wireless communication devices to form a wireless network.
- (i) WAN                      (ii) Ethernet Cable  
(iii) WAP                      (iv) Nodes
- (c) Shortcut key used to quit MS-Access.
- (i) Ctrl + Q                      (ii) Alt + S  
(iii) Ctrl + W                      (iv) Alt + F4
- (d) It is a computer network created for an individual person.
- (i) WAN                      (ii) PAN  
(iii) LAN                      (iv) MAN
- (e) It is used to change appearance and size of various controls of a Form.
- (i) Design View                      (ii) Layout View  
(iii) Form View                      (iv) Print View
- (f) These are the set of rules that determine how data should be transferred over network.
- (i) Cables                      (ii) Hubs  
(iii) Protocol                      (iv) Cards
- (g) It means protecting data and resources from unauthorised access.

- (i) Network Architecture
  - (ii) Network Security
  - (iii) Network Topology
  - (iv) None of these
- (h) Year in which Blogger was launched.
- (i) 1987
  - (ii) 1988
  - (iii) 1999
  - (iv) 2000
- (i) Property used to set multiple criteria in a Query.
- (i) Show
  - (ii) Sort
  - (iii) ON
  - (iv) OR
- (j) Protocol with which computers connected to internet communicate with each other.
- (i) FTP
  - (ii) HTTP
  - (iii) TCP/IP
  - (iv) SMTP

Q2. Give one word answer for the following statements :

(10x1=10)

- (a) It is the most commonly used network card.
- (b) Name the founder of Skype.
- (c) Shortcut key to save changes and close the table in MS-Access.
- (d) Number of languages into which a message can be translated in skype.
- (e) It refers to a computer network restricted to an organisation.
- (f) 'View' in which we can enter, edit and view data in a Form.
- (g) Term used for computers that are connected to a server.
- (h) This property allows us to filter the data either in ascending or descending order.
- (i) Standard filename extension for database in Access 2016.

- (j) This acts as a central point of connection for all computers on a network and every computer plugs into it.

Q3. Answer the following questions : (6x3=18)

- (a) What are 'Relationships' in MS-Access?
- (b) Explain 'Mesh' topology.
- (c) What do you understand by 'RSS'?
- (d) Explain any three views in which a Report can be displayed in Access.
- (e) What is a 'Query'? Name its types.
- (f) What do you understand by 'Local Area Network'?

Q4. Differentiate between the following (write two points each). (5x3=15)

- (a) Flat file and Relational database
- (b) Short Text and Long Text datatype
- (c) Forms and Reports
- (d) Skype and Blog
- (e) MAN and WAN

Q5. Write notes on : (6x2=12)

- (a) Validation Text
- (b) Real Time Communication
- (c) Multimedia
- (d) Primary Key
- (e) Modem
- (f) Network Topology

Q6. Complete the following sentences and rewrite the complete sentence in the answer sheet : (5x1=5)

- (a) \_\_\_\_\_ datatype is used to store monetary data.
- (b) In \_\_\_\_\_ network few computers having equal capacity and capability are connected to each other.
- (c) A \_\_\_\_\_ key is a value in one table that must match primary key of other table.
- (d) WIFI stands for \_\_\_\_\_.

(c) \_\_\_\_\_ is a popular Plug-In that plays streaming audio/video files.

Q7. Consider a 'Books' table in a 'Library' database and answer the questions :

(ii)

(i)

BOOKNAME	CATEGORY	ACCESSION NUMBER	PRICE	ISSUEDATE
Reader's Digest	Magazine	440124SR	140	12/12/16
IT Tools	Coursebook	790126JR	340	11/05/17
India Today	Magazine	347994SR	110	09/09/17
Treasure Island	Coursebook	790127JR	145	11/09/17

(a) Name the datatype used for Issue Date and Accession Number. (2)

(b) Which field can be kept as 'Primary key'. (1)

(c) Write 'Validation Rule' and 'Validation Text' for following fields :

(i) Category should accept either "Magazine" or "Coursebook". (2)

(ii) Price should be above 50 and less than 500. (2)

(d) Identify the table elements marked as (i) and (ii). (1)

Q8. (a) Sudhankar is a CEO of a multinational company. He has to interact with national heads of 5 companies together. Which feature of 'Skype' will allow him to share his computer screen with all other heads involved in the call. (1)

(b) Raman has setup a new office which is fully computerized. Name the topology used in his office if all the nodes are connected in a circular manner. (1)

CLASS : VIII

SUBJECT : SCIENCE

Time : 3 hours

MM : 80

General Instructions :

- (i) This paper consists of three sections A, B and C.
- (ii) Marks are indicated against each question.
- (iii) Draw neat and well labelled diagrams wherever required.

## SECTION-A (PHYSICS)

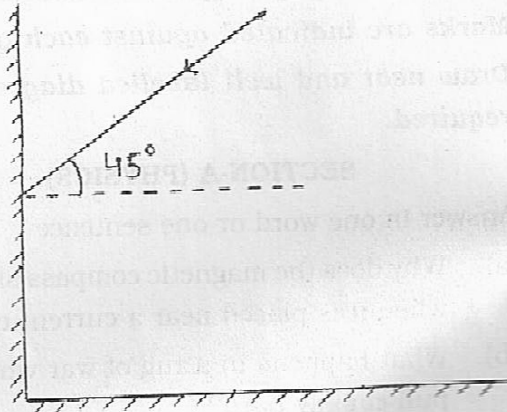
Q1. Answer in one word or one sentence : (5x1=5)

- (a) Why does the magnetic compass show deflection when it is placed near a current carrying wire?
- (b) What happens in a tug of war when two teams pull equally hard?
- (c) Name the planet which is also known as 'Red Planet'.
- (d) Why does the filament of a bulb gets heated when electric current passes through it?
- (e) A rocket has been fired upwards to launch a satellite in its orbit. Name the two forces acting on the rocket immediately after it leaves the launching pad.

Q2. Answer briefly : (4x2=8)

- (a) Why do porters place a thick round piece of cloth on their heads when they have to carry heavy loads?
- (b) Is it safe for the electrician to carry out electrical repairs outdoors during heavy downpour? Explain.

- (c) Differentiate between new moon and full moon day.
- (d) Two plane mirrors are inclined at  $90^\circ$  to each other in the given figure. A ray of light is incident on one of the mirrors as shown in the figure. Draw the reflected ray from the second mirror.

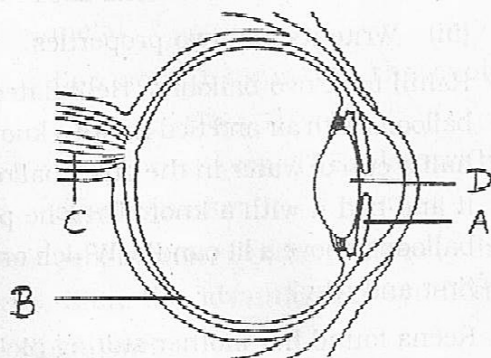


Q3. Answer the following : (3x3=9)

- (a) (i) Draw a sketch to show the relative position of prominent stars in Orion.
- (ii) Name the star which can be located with the help of Orion.
- (b) (i) What is electroplating?
- (ii) Which electrolyte should we use if we want to electroplate copper over iron?
- (iii) Why is zinc coated on iron bridges?
- (c) (i) A man exerts a pressure of 12 Pascal by applying a force of 84N on a box. Calculate the area over which the force is applied.
- (ii) Give an example where force changes the shape of an object.

Q4. Answer the following :

(5)



- Label the parts A, B, C and D in the human eye.
- What are the functions of part A?
- Why can an eagle see clearly during the day but not at night?

#### SECTION-B (CHEMISTRY)

Q1. Answer in one word or one sentence : (5x1=5)

- Name the only metal which is found in liquid state at room temperature.
- We are not advised to sleep in a closed room with burning coal. Give reason.
- Write any two uses of plastics in health care industry.
- Mention two conditions under which water cannot be used as a fire extinguisher.
- All plastics are made up of long chain molecules called \_\_\_\_\_.

Q2. Answer briefly : (4x2=8)

- 'X' is a synthetic fibre made from a raw material obtained from plants.
  - Identify 'X'.

(3)

- (ii) Name the raw material used to prepare 'X'.  
(iii) Write its any two properties.
- (b) Rahul took two balloons. He inflated one of the balloons with air and tied it with a knot. He poured half a cup of water in the other balloon, inflated it and tied it with a knot. Then he put both the balloons above a lit candle. Which one will burst first and why?
- (c) Reena found her mother storing pickle in metal container. She advised her mother to use plastic container instead of metal.
- (i) Which value is shown by Reena?  
(ii) Why is plastic preferred over metals for storing pickles?
- (d) Name the metal or non-metal used for the following:
- (i) making foil for wrapping food  
(ii) in crackers  
(iii) water purification  
(iv) as a fertilizer

Q3. Answer the following :

(3x3=9)

- (a) (i) What is a fuel?  
(ii) Write any three characteristics of an ideal fuel.  
(iii) Which unit is used to express the calorific value of a fuel?
- (b) Rohit took some dilute hydrochloric acid in a test tube and added a small pellet of an element 'A' to it. On bringing a burning matchstick near the mouth of the test tube a pop sound was heard.



- (i) Classify the element 'A' as a metal or a non-metal.
- (ii) Pop sound indicates the evolution of \_\_\_\_\_ gas.
- (iii) How is rust formed? Explain with the help of an equation.
- (c) Most people prefer synthetic fibres to the natural ones. State the advantages of synthetic fibres.

Q4. Answer the following : (5)

- (a) Differentiate between thermoplastics and thermosetting plastics on the basis of
- (i) arrangement of monomers
- (ii) effect of heat
- (b) Give two examples each of thermoplastic and thermosetting plastic.
- (c) As a student, suggest any one way in which you can minimise the overuse of plastics.

#### SECTION-C (BIOLOGY)

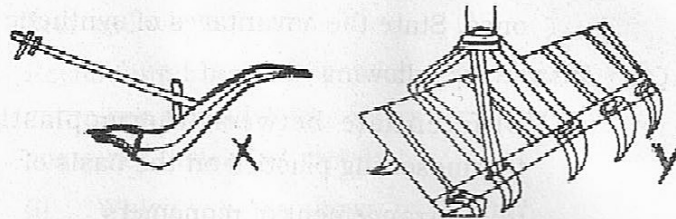
Q1. Answer in one word or one sentence : (4x1=4)

- (a) Reproduction is an essential life process. Justify the statement.
- (b) Identify the unicellular organisms from the ones given below :  
hydra, amoeba, paramccium, bread mould
- (c) Why do young people get acne and pimples on their face during adolescence?
- (d) Reproductive phase in females begins with \_\_\_\_\_ (10-12 years) and ends at menopause (45-50 years).

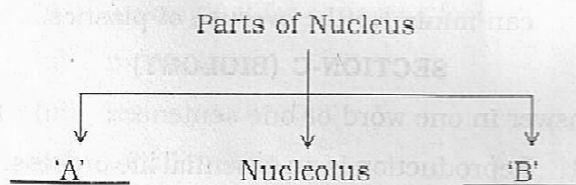
(5)

Q2. Answer briefly : (4x2=8)

- (a) Use of manures in the field is considered advantageous over fertilisers. State any two differences between manures and fertilisers.
- (b) Identify the given agricultural implements 'X' and 'Y' and name the agricultural practice each is used for.



- (c) Draw a neat and well labelled diagram showing asexual reproduction in amoeba.
- (d) Complete the following flow chart and answer the question that follows :



What is the function of part 'B' which can be seen only when the cell divides?

Q3. Answer the following : (3x3=9)

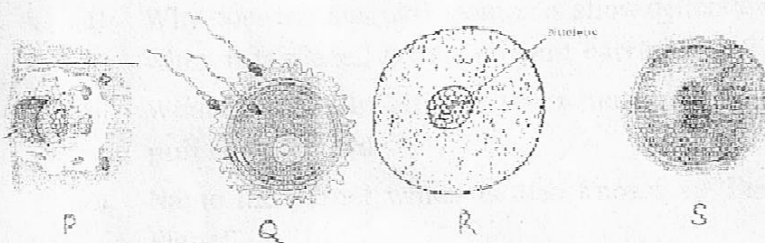
- (a) Give reason for the following :
- (i) Amit lives near a pond. He always notices tadpoles in water but no frogs.
  - (ii) Diabetics are given insulin injections.
  - (iii) Voice becomes hoarse in adolescent boys.
- (b) (i) Define crop.

(ii) India has two major cropping patterns - Kharif and Rabi. What is the difference between them? Give example of each.

(c) Although a woman is often blamed for not giving birth to a male child, it is actually the nature of the sperm that determines the sex of the child. Explain the mechanism of sex determination with the help of a flow chart.

Q4. Answer the following : (5)

(a) The figures given below represent different stages of reproduction in humans. Study them carefully and answer the questions that follow :



- (i) Identify the stages 'Q' and 'S'.
  - (ii) Arrange the stages P, Q, R and S in the correct sequence of development.
  - (iii) Define the process represented in figure Q.
- (b) What is the full form of IVF? Under what conditions do the doctors recommend this technique in females?

(खण्ड - क)

प्र1. निम्नलिखित गद्यांश को पढ़कर नीचे लिखे प्रश्नों के उत्तर दीजिए :-

घर वालों से शिष्ट व्यवहार करना उतना ही ज़रूरी है, जितना कि बाहर वालों से। घर में दूसरों का ख्याल रखने और अच्छा व्यवहार करने से नज़दीकी और अपनापन बढ़ता है। विनम्रता का मतलब है - अच्छी तरह जीव का पालन।

खुद को संतुष्टि देने के साथ ही विनम्रता और शिष्ट व्यवहार के और भी कई फायदे हैं, किंतु फिर भी लोग विनम्रता का पालन नहीं करते। कठोर और असभ्य लोग थोड़े समय के लिए सफल हो सकते हैं, मगर ज्यादातर लोग ऐसे व्यवहार वालों से दूर रहना चाहते हैं, और आखिरकार ऐसे लोग नापसंद किए जाते हैं। बच्चों को बचपन से ही विनम्र व्यवहार की शिक्षा सीखनी चाहिए ताकि बड़े होकर वे सभ्य, समझदार और दूसरों का ख्याल रखने वाला बन सकें। एक बार विनम्र व्यवहार सीख लें, तो वह उम्र-भर साथ रहता है। यह दूसरों का ख्याल रखने और संवेदनशील होने के नज़रिए को दर्शाता है। ऐसी बातें बहुत छोटी और साधारण लगती हैं, लेकिन इंसान को बहुत दूर तक ले जाती हैं। उदाहरण के लिए - 'कृपया', 'शुक्रिया', 'धन्यवाद' और 'मुझे क्षमा कर दीजिए' जैसे चंद शब्द जादू का असर दिखाते हैं।

(क) शिष्ट व्यवहार क्यों आवश्यक है? (1)

(ख) अशिष्ट व कठोर लोगों का जीवन पूर्ण रूप से सफल क्यों नहीं होता है? (1)

(ग) बच्चों का व्यवहार कैसा होना चाहिए? (1)

(घ) किन शब्दों में जादू का असर होता है? (1)

(ङ) गद्यांश के लिए उचित शीर्षक लिखिए। (1)

प्र2. निम्नलिखित काव्यांश को पढ़कर दिए गए प्रश्नों के उत्तर दीजिए :-

लहरों से डरकर नौका पार नहीं होती,  
कोशिश करने वालों की कभी हार नहीं होती।  
नहीं चींटी जब दाना लेकर चलती है,  
चढ़ती दीवारों पर, सौ बार फिसलती है।  
मन का विश्वास रगों में साहस भरता है,  
चढ़कर गिरना, गिरकर चढ़ना न अखरता है।  
आखिर उसकी मेहनत बेकार नहीं होती,  
कोशिश करने वालों की कभी हार नहीं होती।

(1)

डुबकियों सिंधु में गोताखोर लगाता है,  
जा-जाकर खाली हाथ लौटकर आता है।  
मिलते नहीं सहज ही मोती गहरे पानी में,  
बढ़ता दुगना उस्ताह इसी हैरानी में।  
मुट्ठी उसकी खाली हर बार नहीं होती,  
कोशिश करने वालों की कभी हार नहीं होती।  
असफलता एक चुनौती है, इसे स्वीकार करो,  
क्या कमी रह गई, देखो और सुधार करो।  
जब तक न सफल हो, नींद-चैन को त्यागो तुम,  
संघर्ष का मैदान छोड़कर मत भागो तुम।  
कुछ किए बिना ही जय-जयकार नहीं होती,  
कोशिश करने वालों की कभी हार नहीं होती।

- (क) कवि के अनुसार किसकी हार नहीं होती? (1)  
(ख) नहीं चींटी की सफलता का क्या रहस्य है? (1)  
(ग) कवि ने जीवन की चुनौती किसे कहा है? मनुष्य उस पर विजय कैसे प्राप्त कर सकता है? (2)  
(घ) काव्यांश में से दो 'अनुप्रास अलंकार' के उदाहरण छँटकर लिखिए। (1)

(खण्ड - ख)

प्र3. निर्देशानुसार उत्तर दीजिए :-

- (क) अनुस्वार का प्रयोग करके दो शब्द लिखिए। (1)  
(ख) दिए गए शब्द में से उपसर्ग व प्रत्यय अलग करके लिखिए :-  
अनेकता (1)  
(ग) प्रश्नवाचक सर्वनाम का एक उदाहरण वाक्य में लिखिए। (1)  
(घ) निम्नलिखित वाक्य में विशेषण रेखांकित कर भेद लिखिए :-  
राजेश ने चार किलो चावल खरीदे। (1)

प्र4. (क) निम्नलिखित वाक्यों में संरचना के आधार पर क्रिया रेखांकित कर भेद लिखिए :- (2)

- (i) मैं पत्र लिखूँगा।  
(ii) बच्चों ने पुस्तकें खरीद ली हैं।

(ख) निम्नलिखित वाक्यों में कोष्ठक में दिए गए निर्देशों के अनुसार काल परिवर्तन कीजिए :- (2)

- (i) हेमा नृत्य सीखेगी। (सामान्य वर्तमानकाल)  
(ii) मैंने कविता लिखी। (आसन्न भूतकाल)

(ग) निम्नलिखित वाक्यों में रेखांकित क्रिया-विशेषण शब्दों के भेद बताइए :- (1)

(i) रोहन अभी-अभी गया है।

(ii) बिजली अचानक चली गई।

(घ) रिक्त स्थानों को अव्यय द्वारा पूरा कीजिए :- (1)

(i) वह गरीब है, \_\_\_\_\_ ईमानदार है।

(ii) पेड़ \_\_\_\_\_ चिड़िया का बच्चा बैठा है।

(ङ) नीचे लिखे वाक्य में उचित स्थान पर विराम-चिह्न लगाइए :- (1)

आधुनिक युग में तड़क भड़क को विशेष महत्व दिया जाता है

(च) नीचे लिखे वाक्य में उद्देश्य और विधेय छोटकर लिखिए :- (1)

माताजी ने गरीबों को खाना खिलाया।

प्र5. (क) नीचे लिखे शब्दों के विलोम शब्द लिखिए :- (1)

गुप्त, क्रय

(ख) दिए गए शब्द के दो पर्यायवाची शब्द लिखिए :- (1)

किनारा

(ग) निम्नलिखित मुहावरों का वाक्य में प्रयोग कीजिए :- (1)

आँख पथरा जाना

(खण्ड - ग)

प्र6. निम्नलिखित काव्यांश को पढ़कर नीचे दिए गए प्रश्नों के उत्तर दीजिए :

भैया, कबहिं बढ़ेगी चोटी?

कितनी बार मोहिं दूध पियात भई, यह अजहूँ है छोटी।

तू जो कहति बल की बेनी ज्यों, हे है लॉबी-मोटी

काढ़त-गुहत च्हावावत जैहै, नागिनी-सी भुईं लोटी

काँचौ दूध पियावत पचि-पचि, देति न माखन-रोटी।

सूर चिरजीवौ दोउ भैया, हरि-हलधर की जोटी।

(क) बलराम की चोटी की विशेषता बताइए। (1)

(ख) कृष्ण का प्रिय खाद्य पदार्थ क्या है? माँ यशोदा उन्हें क्या देती हैं? (2)

(ग) सूरदास जी कृष्ण और बलराम को क्या आशीर्वाद देते हैं? (1)

(घ) 'पुनरुक्ति प्रकाश' अलंकार तथा 'उपमा' अलंकार का एक-एक उदाहरण छोटकर लिखिए। (1)

प्र7. (क) 'ध्वनि' कविता की भाषागत विशेषताएँ बताइए। (2)

(ख) द्वारका से लौटते समय सुदामा की मनोवशा का वर्णन कविता 'सुदामाचरित' के आधार पर कीजिए। (2)

- (ग) 'कबीर की साखियाँ नैतिक मूल्यों की शिक्षा देती हैं' - दो उदाहरण द्वारा स्पष्ट कीजिए। (2)
- प्र8. निम्नलिखित गद्यांश को पढ़कर नीचे लिखे प्रश्नों के उत्तर लिखिए :-  
 सूरज की सुनहरी किरणों में समुद्र का नीला जल झिलमिला रहा था। चट्टानों को भिगोती हुई समुद्र की लहरों में गीत के स्वर फूट रहे थे। लहरों का यह गीत दूर-दूर तक गूँज रहा था।  
 साँप ने सुना, लहरें मधुर स्वर में गा रही हैं।  
 हमारा यह गीत उन साहसी लोगों के लिए है जो अपने प्राणों को हथेली पर रखे हुए घूमते हैं।
- (क) गद्यांश में लिखे प्राकृतिक सौन्दर्य का वर्णन अपने शब्दों में लिखिए। (2)  
 (ख) लहरों के गीत में किसके लिए व क्या भाव छिपा है? (1)
- प्र9. निम्नलिखित प्रश्नों के उत्तर विस्तार से दीजिए : (3x3=9)
- (क) 'मशीनी युग के कारण अनेक परिवर्तन आए हैं' - 'लाख की चूड़ियाँ' पाठ के आधार पर परिवर्तन के लाभ व हानि दोनों लिखिए।  
 (ख) 'जहाँ पहिया है' पाठ के आधार पर लिखिए कि पुडुकोट्टई की महिलाओं के जीवन को पहिए ने कैसे आत्मनिर्भर बना दिया?  
 (ग) 'बस की यात्रा' पाठ में व्यंग्यकार सचिनय अवज्ञा आंदोलन का वर्णन करके क्या स्पष्ट करना चाहते हैं?
- प्र10. (क) निम्नलिखित शब्दों के अर्थ लिखिए :- (2)  
 निमित्त, यकीन, असीम, अगुवा  
 (ख) निम्नलिखित शब्दों का वाक्य में प्रयोग कीजिए :- (2)  
 ग्रामीण, सुरक्षित
- प्र11. 'बस की यात्रा' पाठ एक यात्रा वृत्तान्त है। लेखक ने अपनी यात्रा के खट्टे-मीठे अनुभव का वर्णन किया है। आप भी अपनी किसी ऐसी अविस्मरणीय यात्रा का वर्णन कीजिए। (3)

अथवा

'भगवान के डाकिए' कविता आज के संदर्भ में कितनी सटीक है? इसका वर्णन करते हुए बताइए कि आप अपने किन-किन कार्यों द्वारा देश के प्रति प्रेम प्रकट कर सकते हैं?

- प्र12. निम्नलिखित प्रश्नों के उत्तर उपन्यास 'गजमुक्ता की तलाश' के आधार पर लिखिए :-
- (क) हंसमुक्ता के सौंदर्य का वर्णन कीजिए। (2)  
 (ख) अम्मा अंग्रेज़ अफसरों को देखकर ज़रा भी नहीं घबराई। मुश्किल समय में साहस से बड़ा कोई इधियार नहीं होता। तर्क द्वारा स्पष्ट कीजिए।

अथवा

'गजमुक्ता की तलाश' एक मित्रता व देशप्रेम पर आधारित उपन्यास है। आप एक श्रेष्ठ मित्र कैसे बन सकते हैं? स्पष्ट कीजिए। (3)

(खण्ड - घ)

- प्र13. योगाभ्यास से होने वाले लाभ पर दो मित्रों के बीच हुई बातचीत को संवाद के रूप में लिखिए। (4)
- प्र14. बच्चों की संस्था 'सदाबहार' हाथ से बनी वस्तुओं की बिक्री करना चाहती है। उसके लिए सुंदर व आकर्षक विज्ञापन तैयार कीजिए। (3)
- प्र15. नीचे दिए चित्र को देखकर 25-30 शब्दों में एक अनुच्छेद लिखिए। (3)



- प्र16. आपके घर के पास पूजा-स्थल में रात-दिन लाउड-स्पीकर का शोर होता है जिससे लोगों को कठिनाई होती है। इस बात की शिकायत करते हुए थानाध्यक्ष को पत्र लिखिए। (5)

अथवा

स्वदेशी वस्तुओं का महत्त्व बताते हुए अपने छोटे भाई को पत्र लिखिए।

- प्र17. निम्नलिखित विषयों में से किसी एक विषय पर 250 शब्दों में निबंध लिखिए:- (5)

- (क) महानगरों में बढ़ता ट्रैफिक जाम  
(ख) राष्ट्र हमारा, हमको प्यारा  
(ग) अपने लिए जिए तो क्या जिए

(5)



## CLASS : VIII

## SUBJECT : ENGLISH

Time : 3 hrs

MM : 80

**General Instructions :**

- (i) *Read the questions carefully.*
- (ii) *Number the answers as given in the question paper.*
- (iii) *Write in a neat and clear handwriting.*
- (iv) *Write the answers in complete sentences.*

**SECTION-A (READING)**

- Q1. Read the passage given below and answer the questions that follow : (7)

It is not surprising that the shameful practice of child labour should have played an important role in the Industrial Revolution. The displaced working classes, from the seventeenth century on, took it for granted that a family would not be able to support itself if the children were not employed. In those days, it was thought admirable that scarcely anybody above the age of four was idle. The economic conditions were such that the children of the poor were forced to work.

Charles Dickens, the greatest English novelist of the era, started working in the Blacking factory at the age of twelve as his family was in the debtor's prison. In 1840, perhaps only twenty percent of the children of London had any schooling; a number which had risen by 1860, when perhaps half of the children between 5 and 15 were in some sort of school, if only a day school or a Sunday school; the others were working. Many of the more fortunate found employment as apprentices in respectable trades or as general servants.

Many children worked 16-hours a day under atrocious conditions as their elders did. Ineffective parliamentary acts to regulate the work of workhouse children in factories and cotton mills to 12 hours per day had been passed as early as 1802 and 1819. After radical agitation, in 1831, when "Short Time Committees" organised largely by Evangelicals began to demand a 10-hours a day, a royal commission established by the whig government recommended in 1833 that children aged 11-18 be permitted to work a maximum of twelve hours per day; children aged 9-11 be allowed to work eight hours per day; and children under

9 were no longer allowed to work at all. This act applied only to the textile industry where children were put to work at the age of 5, and not to a host of other industries and occupations. In iron and coal mines, gas works, shipyards, construction, match factories, nail factories and the business of chimney sweeping, for instance where, the exploitation of child labour was more extensive, the ban was enforced in all of England much later. After further radical agitation, another act in 1847 limited both adults and children to ten hours of work per day.

- (a) What was taken for granted by the displaced working classes? (1)
- (b) At what age did Charles Dickens start working? Why? (1)
- (c) What did the act passed by the government in 1833 recommend? (2)
- (d) Name any two industries where children were employed as labourers. (1)
- (e) In 1847, an act was passed which limited \_\_\_\_\_.
- (f) Find the words from the passage that mean the same as given below : (2x½=1)
- (i) horrifying or brutal
- (ii) the act of treating someone unfairly

Q2. Read the poem given below and answer the questions that follow : (6)

I stayed with her when I was six then went  
To live elsewhere when I was eight years old.  
For ages I remembered her faint scent  
Of lavender, the way she'd never scold  
No matter what I'd done, and most of all  
The way her smile seemed, somehow, to enfold  
My whole world like a warm, protective shawl.

I knew that I was safe when she was near,  
She was so tall, so wide, so large, she would  
Stand mountainous between me and my fear,  
Yet Oh, so gentle, and she understood  
Every hope and dream I ever had.  
She praised me lavishly when I was good,  
But never punished me when I was bad.

Years later war broke out and I became  
A soldier and was wounded while in France,  
Back home in hospital, still very lame.

(C-2)

I realised suddenly that circumstance  
Had brought me close to that small town where she  
Was living still. And so I seized the chance  
to write and ask if she could visit me.

She came. And I still vividly recall  
the shock that I received when she appeared  
that dark cloudy day. Huge grannie was so small!  
A tiny, frail old lady. It was weird.  
She hobbled through the ward to where I lay  
And drew quite close and, hesitating, peer'd.  
And then she smiled ; and love lit up the day.

- (a) At what age did the narrator stay with his grandmother and when did he leave her? (1)
- (b) The narrator said that his grandmother \_\_\_\_\_ him when he did good but never \_\_\_\_\_ him when he did wrong. (1)
- (c) Which 'war' did the speaker refer to? What profession did the speaker choose? (2)
- (d) What kind of relationship did the narrator and his grandmother share? (1)
- (f) Find the words from the poem which mean the same as given below : ( $2 \times \frac{1}{2} = 1$ )
- (i) took hold of
- (ii) looked with concentration or difficulty

#### SECTION-B (WRITING)

- Q3. You are Arvind/Anushka, secretary of the Eco-Club of your school. Your school is celebrating 'Ban the Plastic Week' to create awareness regarding harms of plastic. Draft a suitable notice in not more than 50 words. (4)
- Q4. Read the outlines of the story carefully and develop them into a story. Also suggest a suitable title. (4)
- Mighty king ruled Roshanpur — wanted people to be happy — wanted to find — able and honest people — disguised as a beggar — fell into a pit — cried for help — no one replied — king lost hope and realized no kindness left in people's hear — a small boy — rescued him — king decided — make him next prince.
- Q5. Write a letter to the Editor of a newspaper highlighting the issue of growing impact of advertisements in a common man's life. (6)

### SECTION-C (GRAMMAR)

- Q6. Fill in the blanks with suitable prepositions : (4 × ½ = 2)  
Garima was playing (a) \_\_\_\_\_ her friends (b) \_\_\_\_\_ the garden.  
Her mother kept some chocolate cookies (c) \_\_\_\_\_ the jar (d) \_\_\_\_\_  
the children.
- Q7. Join the following sentences using suitable conjunctions : (2 × 1 = 2)  
(a) The teacher gave us the assignment. She asked us to complete it by Monday.  
(b) Hemant was getting late for his interview. He didn't forget to touch his  
grandmother's feet.
- Q8. Fill in the blanks with suitable degree of adjectives : (4 × ½ = 2)  
(a) A bicycle is a \_\_\_\_\_ means of transport in a traffic jam. (convenient)  
(b) Cherrapunji averages the \_\_\_\_\_ rainfall in India. (high)  
(c) Monica is a \_\_\_\_\_ singer than any other girl in the academy. (good)  
(d) English (hons.) is the \_\_\_\_\_ popular course in our college. (more)
- Q9. Insert appropriate punctuation marks in these sentences : (2 × 1 = 2)  
(a) Siya asked, Can I take this pen  
(b) wow! look at that wide eyed animal
- Q10. Use the past continuous tense or simple past to fill in the blanks : (4 × ½ = 2)  
(a) He \_\_\_\_\_ (have) his food when I \_\_\_\_\_ (call).  
(b) I \_\_\_\_\_ (met) Tanya yesterday. She \_\_\_\_\_ (shop) for her  
wedding.
- Q11. Complete these sentences using suitable determiners : (4 × ½ = 2)  
(a) You can buy red pens in \_\_\_\_\_ bookshop.  
(b) I had \_\_\_\_\_ biscuits in the morning.  
(c) I don't want \_\_\_\_\_ water, thank you.  
(d) \_\_\_\_\_ animals care for their young ones.
- Q12. Rewrite these sentences after inserting the given adverbs in the appropriate places. (4 × ½ = 2)  
(a) The doctor measured the medicine before giving it to the patient. (carefully)  
(b) My grandfather goes out for a walk in the evening. (seldom)

(c) The children created a lot of mess as they were shouting. (loudly)

(d) All the students participated in the function. (enthusiastically)

Q13. Change the following sentences into indirect speech :

(3x1=3)

(a) Aman said, "My father has bought a mechanical servant."

(b) Pragati said, "The children are distributing sweets."

(c) Rohit said, "I will reach the airport at 6:00 am."

Q14. Change the voice of the following sentences :

(3x1=3)

(a) The thieves burgled the Nokia mobile store.

(b) Meenal has spoken the correct answer.

(c) The officer is checking the papers.

#### SECTION-D (LITERATURE)

Q15. Read the extracts given below and answer the questions that follow :

(3x1=3)

(A) "Gathered like pearls in their alien graves

Silent they sleep by the Persian waves".

(a) Name the poem and the poet.

(b) Who does the word 'they' refer to in the above lines.

(c) What does the phrase 'alien graves' mean?

(B) "That is what I thought. And why was she waiting about all that time if she intended to come in?"

(3x1=3)

(a) Identify 'I' and 'she' in the above lines.

(b) Where was she standing and waiting?

(c) What excuse did she make to come in?

Q16. Answer any THREE out of FOUR questions in about 30-40 words each : (3x2=6)

(a) Who was Anukul? Why was his master satisfied with him?

(b) How did Aditya cheat Sasanka Sanyal when they were studying together? Explain with reference to the story 'The Attic'.

(c) The woman in white saree tried to protect Arun at the railway station. How did she do so?

(d) The stay at the doctor's clinic transformed Tricky miraculously. Explain this statement.

Q17. Answer any TWO out of THREE questions in about 30-40 words each : (2x2=4)

- (a) What is the central idea of the poem 'Ozymandias'?
- (b) In the poem, 'The Gift of India' what does the poet think about the Indian soldiers?
- (c) What role did Tim, the ostler play in the poem 'The Highwayman'?

Q18. Answer the following question in 70-80 words : (1x4=4)

The poem 'The Highwayman' ended on a sad note. Elaborate this statement.

OR

In the poem, 'Inchcape Rock' Sir Ralph the Rover was caught in the trap which he had laid for others. How did he meet his tragic end?

Q19. Answer the following question in 80-100 words : (1x5=5)

Why did the narrator live with his grandmother? What role did she play in his life?

OR

You are James Ryder. Write a diary entry describing the journey of the blue carbuncle from the Countess of Morcar's room to Holmes' hotel.

Q20. Answer the following question in 30-40 words : (1x3=3)

How and why did Pip hope to disguise Provis?

Q21. Answer the following question in 80-100 words : (1x5=5)

Who was Mr. Jagger's housekeeper? How did Pip come to know that the housekeeper and Estella were related to each other?

OR

Why did Pip go to the hut on the marshes? What happened in the hut and who saved him?

ANNUAL EXAMINATION

3/2018

CLASS : VIII

SUBJECT : MATHEMATICS

Time : 3 hrs

MM : 80

General Instructions :

- (i) All questions are compulsory.
- (ii) Read all questions very carefully.
- (iii) Questions 1 to 6 carry 1 mark each.
- (iv) Questions 7 to 12 carry 2 marks each.
- (v) Questions 13 to 22 carry 3 marks each.
- (vi) Questions 23 to 30 carry 4 marks each.

Q1. Evaluate  $\left(\frac{1}{2}\right)^{-4}$

Q2. Name the axis on which the point (5, 0) lies.

Q3. Find the product of  $4p$  and  $0$ .

Q4. What is the possible value of  $x$  if  $623x$  is a multiple of  $9$ ?

Q5. Solve  $\frac{6x}{5} = 30$

Q6. Find the area of a rhombus whose diagonals are  $8\text{cm}$  and  $12\text{cm}$  respectively.

Q7. Construct a rectangle  $ABCD$  where  $AB = 8\text{cm}$  and  $BC = 4\text{cm}$ .

Q8. Find and correct the error in the given mathematical statement.

$$x + 7x + 13x = 20x$$

Q9. If Kiran had ₹ 600 left after spending 75% of her money. How much money did she have in the beginning?

Q10. Find the value of A and B in

$$\begin{array}{r} 2A \\ + 57 \\ \hline B1 \end{array}$$

Q11. Express :

(a) 3921000 in standard form.

(b)  $3.7 \times 10^{-4}$  in usual form.

Q12. Find the value of n for which  $5^{-3} \times 5^n = 5^4$

Q13. The sum of three consecutive multiples of 6 is 666.  
Find the multiples of 6.

Q14. Factorise and then divide :  $5z(9x^2 - 16y^2) \div (3x + 4y)$

Q15. Use the laws of exponents and simplify :  $\frac{3^{-5} \times 3^9}{3^3 \times 5^2}$

Q16. Find the value of P, Q and R in

$$\begin{array}{r} P Q \\ \times 3 \\ \hline R P Q \end{array}$$

Q17. What amount is to be repaid on a loan of ₹ 12000 for

$1\frac{1}{2}$  years at 10% per annum compounded half yearly?

Q18. (a) Simplify  $(a^2 + 5)(b^2 + 3) + 5$

(b) Show that

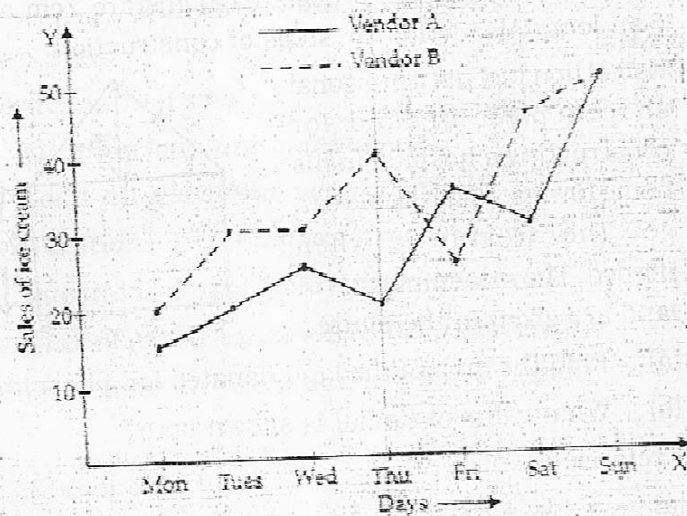
$$(a - b)(a + b) + (b + c)(b - c) + (c - a)(c + a) = 0$$

Q19. Construct a quadrilateral PQRS where PQ = 4cm,  
QR = 6cm, RS = 5cm, PS = 5.5cm and PR = 7cm.

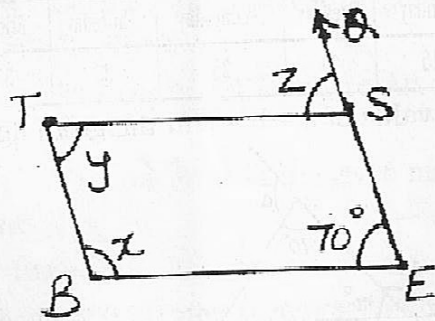
Q20. Simran painted the outside of the cuboidal box of  
measure 50cm × 40cm × 25cm. How much surface  
area did she cover if she painted all surfaces except  
the bottom of the box?



Q21. The graph given below compares the sale of ice creams of two vendors for a week. Observe the graph and answer the following questions.



- Which vendor has sold more ice cream on Friday?
  - For which day was the sale same for both the vendors?
  - On which two days was the sale same for vendor B?
- Q22. In the given parallelogram BEST if  $\angle E = 70^\circ$ , then find the values of  $x$ ,  $y$  and  $z$ .



Q23. Solve and check the result :  $3x - 7 = x + 5$

(3)

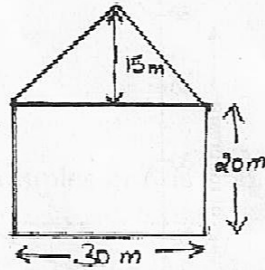
Q24. Simplify using identities :

(a)  $103^2$

(b)  $(4a - 9)(4a - 9)$

Q25. Construct a rhombus whose diagonals are 7cm and 5cm long. Also write the steps of construction.

Q26. Kamal donated his pentagonal shaped piece of land for constructing a hospital in his home town so that people can get the treatment when needed. The measurements of land are given in the figure.



(a) Find the area of the land donated for a hospital.

(b) What value of Kamal is shown here?

Q27. Factorise :

(a)  $x^2 - xy + 8x - 8y$

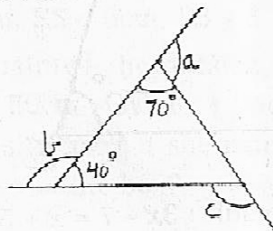
(b)  $x^2 + 8x + 16$

Q28. Rajat bought goods worth ₹ 7560 and spent ₹ 1440 on repair and packaging. He sold the goods for ₹ 9900. Find his overall gain or loss percent.

Q29. The following table shows the number of books borrowed on each day of a week in a school library. Plot the information on the graph and state whether it is a linear graph or not?

Days	Monday	Tuesday	Wednesday	Thursday	Friday	Saturday
Number of Books	15	20	25	30	35	40

Q30. Find the value of  $a + b + c$  in the given figure.



समय: - होरात्रयम्

पूर्णाङ्कः - 80

निर्देशाः (i) अस्मिन् प्रश्नपत्रे चत्वारः खण्डाः सन्ति।

(ii) प्रतिखण्ड - उत्तराणि पृथक् प्रदत्तायाम् उत्तरपुस्तिकायां लेखनीयानि।

(iii) प्रत्येकं खण्डं अधिकृत्य उत्तराणि एकस्मिन् स्थाने क्रमेण लेखनीयानि।

(iv) प्रश्नपत्रे उत्तराणि न लेखनीयानि।

(v) प्रश्नसंख्या प्रश्नपत्रानुसारं अवश्यमेव लेखनीया।

(vi) सर्वेषां प्रश्नानां उत्तराणि संस्कृतेन लेखनीयानि।

खण्डः 'क' (अपठित अवबोधनम्)

अङ्काः 10

प्र1. अधोलिखितम् अनुच्छेदं पठित्वा प्रदत्तप्रश्नानां उत्तराणि लिखत -

स्वच्छं पर्यावरणम् अस्माकं जीवनस्य आधारः अस्ति। पुष्पिताः पल्लविताः वृक्षाः पर्यावरणस्य आधाराः भवन्ति। प्रत्येकप्राणी श्वसनक्रियायां प्राणवायुं गृह्णाति अपानवायोः च बहिः विसर्जनं करोति। वृक्षाणां श्वसनक्रिया तु मानवानां विपरीता अस्ति। अतः वृक्षैः पर्यावरणं शुद्धं भवति। वृक्षाः पर्यावरणं सन्तुलितं कुर्वन्ति। ते यथाकालं मेघानां वर्षणे सहायकाः भवन्ति। वृक्षाः भूमेः जलं गृह्णन्ति। अस्य जलस्य किञ्चित् भागं ते प्रयुज्यन्ते अवशिष्टं जलं च वाष्परूपेण पत्रेभ्यः बहिः निर्गच्छति। इदं जलं मेघानां निर्माणे सहायकं भवति। वृक्षाः पुष्पाणां फलानाम् औषधीनां च आगाराः सन्ति। वृक्षपादपानां हरीतिमा, तेषां पुष्पाणां शोभा पक्षिणां कलरवः च मानवानां कृते सुखदाः भवन्ति।

I. एकपदेन उत्तरत -

(4x½=2)

(i) पुष्पिताः पल्लविताः वृक्षाः कस्य आधाराः सन्ति?

(ii) अवशिष्टं जलं वाष्परूपेण केभ्यः बहिः निर्गच्छति?

(iii) स्वच्छं पर्यावरणं अस्माकं कस्य आधारः अस्ति?

(iv) वृक्षाः भूमेः किम् गृह्णन्ति?

II. पूर्णवाक्येन उत्तरत -

(2x2=4)

(i) मानवानां कृते काः काः सुखदाः भवन्ति?

(ii) वृक्षाः केषां आगाराः सन्ति?

III. यथानिर्देशम् उत्तरत -

(4x½=2)

(i) 'अवशिष्टं जलं' अनयोः पदयोः विशेषणपदम् किम् अस्ति?

(ii) 'प्रत्येकप्राणी श्वसनक्रियायां प्राणवायुं गृह्णाति' अत्र 'गृह्णाति' क्रियापदस्य कर्तृपदम् किम् अस्ति?

(iii) 'अशुद्धं' अस्य किम् विलोमपदम् अत्र प्रयुक्तम्?

(iv) 'खगानां' अस्य किं पर्यायपदम् अत्र प्रयुक्तम्?

IV. अस्य गद्यांशस्य कृते समुचितं शीर्षकं लिखत।

(2)

(C-1)

- प्र2. स्वविद्यालयस्य वार्षिकोत्सवस्य वर्णयन् स्वमित्रं प्रति लिखितं पत्रं मञ्जूषायां प्रदत्तैः पदैः पूरयित्वा पुनः उत्तरपुस्तिकायाम् लिखत - (10x½=5)

मञ्जूषा

प्रस्तुता, सुसज्जितः, अहम्, नमस्ते, कुशलं, अवसरे, सुरेशः, कन्यायाः, शिक्षानिर्देशक, चण्डीगढ़-नगरात्

(i) \_\_\_\_\_

दिनांकः \_\_\_\_\_

प्रिय मित्र रमेश!

सस्नेहं (ii) \_\_\_\_\_ ।

अत्र (iii) \_\_\_\_\_ तत्रास्तु । अस्मिन् पत्रे (iv) \_\_\_\_\_ स्वविद्यालयस्य वार्षिकोत्सवस्य वर्णनं करोमि । अस्मिन् (v) \_\_\_\_\_ मम विद्यालयः पत्रलताभिः (vi) \_\_\_\_\_ आसीत् । (vii) \_\_\_\_\_-महोदयः समारोहस्य मुख्यातिथिः आसीत् । छात्रैः एका लघुनाटिका (viii) \_\_\_\_\_ । एकस्याः (ix) \_\_\_\_\_ नृत्यम् अपि अभवत् । मुख्यातिथिमहोदयेन पुरस्काराणां वितरणम् अपि कृतम् । शेषं भिलित्वा कथयिष्यामि ।

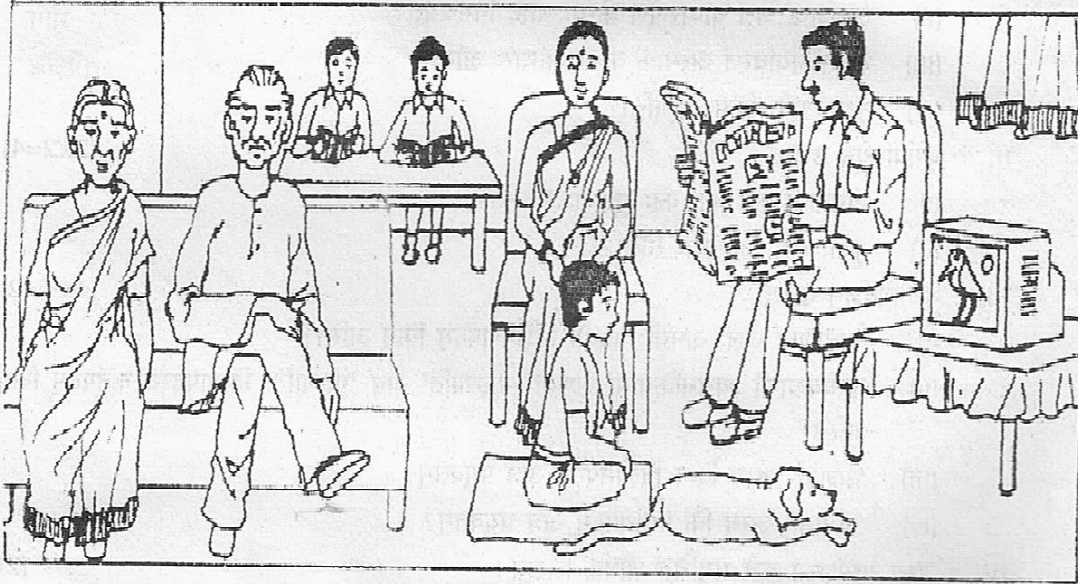
भवतः मित्रम्

(x) \_\_\_\_\_

- प्र3. अधः प्रदत्तं चित्रं आधृत्य मञ्जूषायां प्रदत्तशब्दानां सहायतया पञ्च संस्कृतवाक्यानि लिखत - (5x2=10)

मञ्जूषा

पश्यति, पुस्तके, पठति, आसन्दिकायाम्, स्थिता, आसने, गृहस्य, दूरदर्शनं, बालकः, महिला, पुरुषः, समाचारपत्रं, वृद्धः, वृद्धा, बालकौ, कुक्कुरः, भूमौ



(C-2)

- प्र4. अधोलिखितवाक्येषु रेखांकितपदेषु सन्धिं सन्धिच्छेदं वा कृत्वा पुनः पूर्णवाक्यं लिखत - (3x1=3)
- (i) प्रधानाचार्यः बालकान् सम्बोधयति ।  
(ii) परम + ईश्वरः संसारस्य रक्षकः अस्ति ।  
(iii) सैनिकः भो + अनम् प्रति गच्छति ।
- प्र5. मञ्जूपातः उचित-अव्ययपदं चित्वा रिक्तस्थानं पूरयत - (4x½=2)

मञ्जूषा  
इतस्ततः, उच्चैः, तत्र, परश्वः

- (i) \_\_\_\_\_ वयं जयपुरनगरं गमिष्यामः ।  
(ii) यत्र विकित्सालयः \_\_\_\_\_ रुग्णाः ।  
(iii) रात्रौ कुक्कुराः \_\_\_\_\_ भ्रमन्ति ।  
(iv) \_\_\_\_\_ पाठं पठ ।
- प्र6. (क) अधोलिखित-वाक्ययोः रेखांकितपदस्य प्रकृति-प्रत्ययौ पृथक् पृथक् कृत्वा अथवा संयोज्य वाक्यानि पुनः लिखत - (2x1=2)
- (i) लता पुस्तकं आदाय गृहम् गच्छति ।  
(ii) राजा धनं दा + तुमुन् मन्दिरं गच्छति ।
- (ख) (i) क्त्वा प्रत्ययं संयोज्य वाक्यसंयोजनम् कुरुत - (2x1=2)  
सीता ईश्वरं नमति । सा विद्यालयं गच्छति ।  
(ii) ल्यप् प्रत्ययं संयोज्य वाक्यसंयोजनम् कुरुत -  
बालकः विद्यालयात् आगच्छति । सः भोजनं करोति ।
- प्र7. अधोलिखितवाक्येषु अंकानां स्थाने संख्यावाचक-विशेषणैः रिक्तस्थानानि पूरयित्वा पुनः लिखत - (3x1=3)
- (i) शीतावकाशे वयं (51) \_\_\_\_\_ छात्राः भ्रमणाय अगच्छन् ।  
(ii) उद्याने (77) \_\_\_\_\_ पुष्पाणि विकसन्ति ।  
(iii) संस्कृतविषये मम (90) \_\_\_\_\_ अङ्काः सन्ति ।
- प्र8. कोष्ठगतशब्दे उचितविभक्तिं प्रयुज्य वाक्यं पुनः उत्तरपुस्तिकायां लिखत - (2x1=2)
- (i) अलं \_\_\_\_\_ । (विषाद)  
(ii) अध्यापकः \_\_\_\_\_ स्निह्यति । (शिष्य)
- प्र9. उचितशब्दरूपैः रिक्तस्थानानि पूरयित्वा वाक्यानि पुनः लिखत - (4x1=4)
- (i) हे \_\_\_\_\_ ! अहं नमामि । (मुनि)  
(ii) तस्य \_\_\_\_\_ समीपे मम पुस्तकम् अस्ति । (मातृ - बन्धी विभक्तिः, एकवचनम्)  
(iii) \_\_\_\_\_ फलं मधुरं नास्ति । (इदम्)  
(iv) कविः \_\_\_\_\_ सह गच्छति । (राजन्)

- प्र10. उचितधातुरूपैः रिक्तस्थानानि पूरयित्वा वाक्यानि पुनः लिखत - (4x1=4)
- (i) श्वः त्वं नाटकं \_\_\_\_\_ । (दृश)
- (ii) ते तत्र गत्वा अध्यापकं \_\_\_\_\_ । (नम् - लोट् लकारे)
- (iii) पुरा एकः नृपः \_\_\_\_\_ । (अस्)
- (iv) वयम् भोजनं \_\_\_\_\_ । (खाद्)

- प्र11. निम्नवाक्यानि शुद्धं कृत्वा पुनः लिखत - (3x1=3)
- (i) लता चतुरः बालिका अस्ति ।
- (ii) युवाम् उच्चैः हसावः ।
- (iii) ह्यः रामः तत्र न गमिष्यति ।

खण्डः 'घ' (पठित अवबोधनम्)

अङ्काः 30

- प्र12. अधोलिखितं गद्यांशं पठित्वा प्रदत्तप्रश्नानां उत्तराणि लिखत - (5)
- लोमशिका चञ्चलं अकथयत् - बाढम्, त्वं जालं प्रसारय । पुनः सा व्याघ्रम् अवदत् - केन प्रकारेण त्वम् एतस्मिन् जाले बद्धः इति अहं प्रत्यक्षं द्रष्टुम् इच्छामि । व्याघ्रः तद् वृत्तान्तं प्रदर्शयितुं तस्मिन् जाले प्राविशत् । लोमशिका पुनः अकथयत् - सम्प्रति पुनः पुनः कूर्दनम् कृत्वा दर्शय । सः तथैव समाचरत् । अनारतं कूर्दनेन सः श्रान्तः अभवत् ।

- I. एकपदेन उत्तरत - (2x½=1)
- (i) कः श्रान्तः अभवत्?
- (ii) का चञ्चलम् अकथयत्?
- II. पूर्णवाक्येन उत्तरत - (2x1=2)
- (i) व्याघ्रः किमर्थं तस्मिन् जाले प्राविशत्?
- (ii) अन्ते लोमशिका पुनः किम् अकथयत्?
- III. यथानिर्देशम् उत्तरत - (4x½=2)
- (i) 'क्लान्तः' अस्य किम् पर्यायपदम् अत्र प्रयुक्तम्?
- (ii) 'एतस्मिन् जाले' अनयोः पदयोः विशेषणपदम् किम्?
- (iii) 'इच्छामि' क्रियापदस्य कर्तृपदम् किम्?
- (iv) 'अप्रत्यक्षम्' अस्य किम् विलोमपदम् अत्र प्रयुक्तम्?

- प्र13. अधोलिखितं पद्यांशं पठित्वा प्रदत्तप्रश्नानाम् उत्तराणि लिखत - (5)
- शनैर्यदि यामि चिररात्राय विलपिष्यति गृहे बालः ।  
द्रुतं यदि यामि वसनं मे भवेदारद्रं सलिलवेगैः ॥
- I. एकपदेन उत्तरत - (2x½=1)
- (i) कः विलपिष्यति?

- (ii) बालः कुत्र अस्ति? (1x1=1)
- II. पूर्णवाक्येन उत्तरत - (1x1=1)
- जलवाहिनी यदि द्रुतं गच्छेत् तर्हि किं स्यात्?
- III. यथानिर्देशम् उत्तरत - (4x½=2)
- (i) 'गच्छामि' इति अर्थे किम् पदम् अत्र प्रयुक्तम्?
- (ii) 'द्रुतम्' अस्य किम् विलोमपदम् अत्र प्रयुक्तम्?
- (iii) 'आर्द्रं वसनम्' अनयोः पदयोः विशेषणपदं किम्?
- (iv) 'वस्त्रम्' अस्य किम् पर्यायपदम् अत्र प्रयुक्तम्?

प्र14. अधोलिखितं संवादं पठित्वा प्रदत्तप्रश्नानां उत्तराणि लिखत - (5)

कचनार् - भवतु, बहुधा प्रयुक्तस्य प्लास्टिकस्य दूरगामिनः घातकाः परिणामाः वयं न द्रष्टुं शक्नुमः। प्लास्टिकं कदापि न गलति, न च अपक्षीयते। यथा - अन्यानि वस्तूनि विनश्य मृत्तिकायां विलीयन्ते।

चेनम्मा - प्लास्टिकस्य मृत्तिकायां लयाभावात् अस्माकं पर्यावरणस्य कृते महती क्षतिः भवति।

रिपञ्ची - एकेन पदार्थेन अपरः पदार्थः सृज्यते, अथवा विनिष्टं वस्तु मृत्तिकायां मिलति। परं प्लास्टिके इयं प्रक्रिया असम्भवा एव।

- I. एकपदेन उत्तरत - (2x½=1)
- (i) अन्यानि वस्तूनि विनश्य कस्यां विलीयन्ते?
- (ii) किम् कदापि न गलति?
- II. पूर्णवाक्येन उत्तरत - (2x1=2)
- (i) वयं किं न द्रष्टुम् शक्नुमः?
- (ii) प्लास्टिकस्य मृत्तिकायां लयाभावात् किम् भवति?
- III. यथानिर्देशम् उत्तरत - (4x½=2)
- (i) 'सम्भवा' अस्य किम् विलोमपदम् अत्र प्रयुक्तम्?
- (ii) 'शक्नुमः' अस्य क्रियापदस्य कर्तृपदम् किम्?
- (iii) 'अन्यः' अस्य किम् पर्यायपदम् अत्र प्रयुक्तम्?
- (iv) 'अन्यानि वस्तूनि' अनयोः पदयोः विशेषणपदम् किम् अस्ति?

प्र15. अधोलिखित-श्लोकस्य अन्वयम् उचितक्रमेण पूरयित्वा उत्तरपुरित्वा पुनः लिखत - (4x1=4)

गिरिशिखरे ननु निजनिकेतनम् विनैव यानं नगारोहणम्।

बलं स्वकीयं भवति साधनम् सदैव पुरतो निधेहि चरणम् ॥

अन्वयः - ननु निजनिकेतनम् (i) \_\_\_\_\_ यानं विना एव नगारोहणम्। स्वकीयं (ii) \_\_\_\_\_ साधनं (iii) \_\_\_\_\_ सदैव (iv) \_\_\_\_\_ पुरतः निधेहि।

प्र16. अधोलिखित-वाक्येषु रेखांकितपदानि आधृत्य प्रश्ननिर्माणं कुरुत - (4x1=4)

- (i) आर्यभटस्य वेधशाला पाटलिपुत्रं आसीत् ।
- (ii) प्रेमली प्रेमलस्य पत्नी आसीत् ।
- (iii) आर्यभटेन आर्यभटीयम् रचितम् ।
- (iv) निकटे कूपः वर्तते ।

प्र17. अधोलिखित-वाक्यानि घटनाक्रमानुसारेण पुनः लिखत - (8x½=4)

- (i) दूरस्थः शृगालः रवं कर्तुम् आरभत ।
- (ii) गुहायां कोऽपि अरित इति शृगालस्य विचारः ।
- (iii) दूरं पलायमानः शृगालः श्लोकम् अपठत् ।
- (iv) क्षुधार्तः सिंहः महतीं गुहाम् अपश्यत् ।
- (v) सर्वे पशवः भयभीताः अभवन् ।
- (vi) सिंहः शृगालस्य आह्वानम् अकरोत् ।
- (vii) सिंहः अचिन्तयत् - नूनं रात्रौ कोऽपि जीवः गुहायाम् आगच्छति ।
- (viii) गुहा सिंहोद्वर्गजन-प्रतिध्वनिना प्रतिध्वनिता ।

प्र18. अर्थैः सह शब्दानाम् मेलनं कृत्वा उत्तरपुस्तिकायाम् पुनः लिखत - (6x½=3)

शब्दाः	अर्थाः
लोके	पर्वत
कुम्भम्	रंवे
सूर्यः	संसारे
चरणौ	शीघ्रम्
गिरि	घटम्
झटिति	पादै



**ANNUAL EXAMINATION**

2/2018

**CLASS : VIII**

**SUBJECT : SOCIAL SCIENCE**

**Time : 3 hrs**

**MM : 80**

**General Instructions :**

- (i) *Read all the questions carefully and number the answers according to the questions.*
- (ii) *Questions carrying 1 mark should be answered in one sentence.*
- (iii) *Questions carrying 3 marks should be answered within 60-80 words.*
- (iv) *Questions carrying 5 marks should be answered within 80-100 words.*
- (v) *Attach the maps properly to the main sheet.*

Q1. Answer the following questions in one sentence each:

(6x1=6)

- (i) 'She founded a widows' home to provide shelter to ill treated women'. Name her.
- (ii) Define smelting.
- (iii) Which Article of the Indian Constitution states that practising untouchability in any form is a punishable crime?
- (iv) What do you mean by law enforcement?
- (v) If the population pyramid of the country is broad at the base and narrow towards the top, what does it represent?
- (vi) Which is the largest textile city of India?

- Q2. Discuss the role of planning commission immediately after independence. (3)
- Q3. 'He was the founder of Brahma Samaj'. Identify him and write the contributions made by him. (1+2=3)
- Q4. What were the problems faced by Indian textiles in European countries during the 18th century? (3)
- Q5. 'The Constitution demarcates the powers of the central and state government through three lists'. Explain. (3)
- Q6. Discuss the impact of marginalisation on adivasis. (3)
- Q7. Why do you think the government must assume the overall responsibility for the provision of public facilities? (3)
- Q8. What do you understand by the term minority? Give any two reasons why the Constitution protects the minority communities. (1+2=3)
- Q9. 'Resources can be classified into three broad categories'. Discuss. (3)
- Q10. Write a short note on plantation agriculture. (3)
- Q11. Distinguish between actual and potential resources. (3)
- Q12. 'This fibre crop is also known as golden fibre'. Identify it and write the geographical conditions required for its growth. (1+2=3)
- Q13. 'The conflict between Bengal nawabs and the East India Company eventually led to the Battle of Plassey'. Discuss. (5)
- Q14. Discuss the features of Non-cooperation movement. (5)

Q15. (a) Why do foreign companies set up their production units in India?

(b) 'A law on minimum wages is an important need'.  
Give two reasons. (3+2=5)

Q16. What is reservation policy? Briefly explain its working.  
(1+4=5)

Q17. Explain the key features of the Indian Constitution.  
(5)

Q18. Discuss the geographical factors responsible for uneven distribution of population in the world. (5)

Q19. (a) Which industry is known as feeder industry?

(b) Classify industries on the basis of ownership.  
(1+4=5)

Q20. Attempt the following maps :

(a) On the provided political map of India, name and mark the following : (3x1=3)

- (i) An area ruled by Ranjit Singh.
- (ii) Place where non-cooperation movement was called off.
- (iii) State where Bhilai steel plant was set up.

(b) On the provided political map of the world, name and mark the following : (3x1=3)

- (i) ~~The most~~ sparsely populated country.
- (ii) Manchester of Japan.
- (iii) Silicon plateau

Time : 3 hrs

MM : 80

*General Instructions :*

- (i) *Read all the questions carefully.*
- (ii) *Number the answers as given in the question paper.*
- (ii) *Write in a neat and clear handwriting.*
- (iii) *Write the answers in complete sentences.*

**SECTION-A [COMPRÉHENSION ÉCRITE]**

A1. Lisez :

Bonjour! Je suis Laura et je suis née à New York. Mon mari est né à Madrid. Il s'appelle Paulo. Nous nous sommes mariés il y a deux ans. Maintenant nous habitons à Paris. Avant Paris, nous sommes restés à Londres pour deux ans. Nous sommes partis de Londres en 2016. J'aime Paris plus que Londres. J'ai vu tous les monuments et j'adore le Louvre. J'ai visité ce musée plusieurs fois. Nous aimons la cuisine ici et surtout les fromages comme brie et reblochon.

A1.1 Répondez aux questions.

(2x1=2)

- (i) Quelles sont les choses que Laura aime à Paris?
- (ii) Laura et Paulo se sont mariés depuis combien d'années?

A1.2 Dites vrai ou faux.

(4x1=4)

- (i) Laura habite à Londres.
- (ii) Elle est née à Madrid.
- (iii) Elle a vu tous les monuments.
- (iv) Ils sont restés à Londres pour deux ans.

A1.3 Donnez l'infinifif. (4x1/2=2)

- (i) né = \_\_\_\_\_ (ii) partis = \_\_\_\_\_  
(iii) vu = \_\_\_\_\_ (iv) suis = \_\_\_\_\_

A2. Lisez le texte.

Le train à grande vitesse (TGV) est en circulation depuis le début des années 80. Beaucoup de voyageurs français et étrangers utilisent ce train. Ils trouvent ce train plus pratique et économique. Toutes les grandes villes en France ont une gare de TGV. En reliant les villes européennes, le TGV a des noms différents. Pour aller en Allemagne, en Belgique ou aux Pays-Bas, le TGV est nommé le Thalys et pour aller à Londres, le TGV est nommé l'Eurostar.

A2.1 Répondez. (2x1=2)

- (i) Qu'est-ce que c'est le TGV?  
(ii) Quel est le nom de TGV qui va à Londres?

A2.2 Dites vrai ou faux. (4x1=4)

- (i) Le TGV qui va aux Pays-Bas est le Thalys.  
(ii) Il est en circulation depuis le début des années 80.  
(iii) Beaucoup de voyageurs anglais utilisent ce train.  
(iv) Toutes les grandes villes en France ont une gare de TGV.

A2.3 Complétez avec un mot du texte. (2x1/2=1)

- (i) Je suis allé chercher mon oncle à la \_\_\_\_\_, (gare/  
train)  
(ii) En France, nous pouvons trouver \_\_\_\_\_ fromages.  
(grande/beaucoup de)

**SECTION-B [EXPRESSION ÉCRITE]**

B1. Quels sont vos projets d'avenir. Écrivez 6-7 projets. (5)

B2. Mettez le dialogue en ordre. (5)

Client : Bonjour monsieur

Employé : Oui madame. Voilà les choses.

Client : Je vais prendre une baguette et six pains au chocolat.

Employé : Merci madame.

Client : Pour finir, je veux une brioche, s'il vous plaît.

Employé : Bonjour madame, qu'est-ce que vous désirez?

Client : Voilà 6 euros 20.

Employé : Alors, une baguette, six pains au chocolat et une brioche. 6 euros 20, s'il vous plaît.

Client : Merci. Ça fait combien?

Employé : Voilà, quoi d'autre?

Client : Merci monsieur. Au revoir!

B3. Vous invitez votre ami(e) pour votre anniversaire. Rédigez cette invitation. (5)

B4. Regardez l'image et répondez. (2+3=5)

(a) (i) Qu'est-ce que c'est?

(ii) Que les enfants jouent-ils?



(b) (i) Quel magasin est-il?

(ii) Que peut-on acheter de ce magasin? Nommez deux choses.



(3)

**SECTION-C [GRAMMAIRE]**

C1. Cochez la bonne réponse.

(10x1=5)

- (i) Hier, j'ai (connu/reçu/été) une carte.
- (ii) Marie donne le sac (au/à l'/à) homme.
- (iii) Elle aime (la/de la/le) salade verte.
- (iv) C'est le parapluie (du/d'/de) Antoine.
- (v) Nous avons (pris/mis/compris) le couvert.
- (vi) Elles (ont/vont/sont) vu une dispute.
- (vii) Vous (êtes/avez/allez) sorti hier soir.
- (viii) Angeline et sa mère sont (allées/allés/alles) au cinéma.
- (ix) Je ne mange pas (de/des/d') tartines.
- (x) Tu as (un/une/des) chapeau noir.

C2. Mettez les verbes au futur simple.

(5x1=5)

- (i) Il \_\_\_\_\_ beau demain. (faire)
- (ii) J' \_\_\_\_\_ une lettre. (envoyer)
- (iii) Quand ils \_\_\_\_\_ le projet? (finir)
- (iv) Monique \_\_\_\_\_ le bus. (attendre)
- (v) Tu \_\_\_\_\_ travailler seul. (devoir)

C3. Conjuguez les verbes pronominaux au passé composé à la forme affirmative.

(3x1=3)

- (i) Il se coucher.
- (ii) Vous se laver.
- (iii) Elles s'habiller.

C4. Mettez au négatif.

(3x1=3)

- (i) Victor voit quelqu'un dans la chambre.
- (ii) J'ai acheté quelque chose de cette boutique.
- (iii) Tu vas encore à l'école.

- C5. Transformez les phrases à l'impératif. (3x1=3)
- (i) Tu ouvres ta bouche.
  - (ii) Vous mangez chez Luc.
  - (iii) Nous nous levons à 6h.
- C6. Mettez les phrases suivantes à la forme interrogative en utilisant la forme mentionnée. (3x1=3)
- (i) Ils mangent peu de chocolat. (II)
  - (ii) Nous aimons les fruits. (III)
  - (iii) Le tableau est bas. (I)
- C7. Donnez le participe passé des verbes suivants. (4x½=2)
- (i) naître \_\_\_\_\_
  - (ii) remplir \_\_\_\_\_
  - (iii) falloir \_\_\_\_\_
  - (iv) aller \_\_\_\_\_
- C8. Corrigez la faute. (2x1=2)
- (i) Lisa est été fatiguée.
  - (ii) Je fais de crêpes le soir.
- C9. Retrouvez les phrases. (2x1=2)
- (i) sont/à/heures/Ils/arrivés/dix
  - (ii) unc/robe/eu/belle/Elle/a/rouge
- C10. Chassez l'intrus. (4x½=2)
- (i) mort, bu, retourné, descendre
  - (ii) du, de la, des, aux
  - (iii) banque, restaurant, musée, théâtre
  - (iv) monter, rentrer, arriver, passer

**SECTION-D [LA CULTURE ET LA CIVILISATION]**

- D1. Dites vrai ou faux. (5x1=5)
- (i) Il ne faut pas étudier pour réussir.
  - (ii) Il faut employer bien le temps.
  - (iii) Il y a plus de 300 sortes de fromages en France.



(iv) Le théâtre de Guignol est un théâtre de marionnettes.

(v) Diwali est une fête française. 65

D2. Choisissez la bonne réponse. (10x1/2=5)

(i) La Basilique de Fourvière est une belle \_\_\_\_\_  
de Notre Dame.

- (a) bibliothèque (b) église  
(c) gare

(ii) Dans un repas organisé, on commence avec \_\_\_\_\_.

- (a) du café (b) des hors-d'œuvre  
(c) du dessert

(iii) À Marseille, \_\_\_\_\_.

- (a) Il fera chaud (b) Il fera beau  
(c) Il fera froid

(iv) Mme. Lavigne a mal \_\_\_\_\_.

- (a) aux jambes (b) à la tête  
(c) à l'estomac

(v) Les français mangent le déjeuner à \_\_\_\_\_.

- (a) 13 h (b) 8 h  
(c) 10 h

(vi) Un pays francophone est \_\_\_\_\_.

- (a) L'Inde (b) Le Pakistan  
(c) La Belgique

(vii) Les français sont experts dans la fabrication des \_\_\_\_\_.

- (a) vins (b) fromages  
(c) parfums

(viii) Le plus vite des trains français est le \_\_\_\_\_.

- (a) RER (b) TGV  
(c) Renault

(ix) \_\_\_\_\_ est la capitale de la haute couture.

- (a) Lyon (b) Paris  
(c) Nice

(x) Le mariage de Patrick avec Christine est le \_\_\_\_\_  
octobre.

- (a) 27 (b) 25  
(c) 28

D3. Reliez les colonnes A et B : (6x½=3)

A B

- (i) La bijouterie (a) Peugeot  
(ii) La voiture française (b) la fusée Ariane  
(iii) Le monument français (c) des bijoux  
(iv) L'avion (d) des fleurs  
(v) Le fleuriste (e) le Panthéon  
(vi) Le stade (f) jouer au foot

D4. Répondez aux questions. (2x1=2)

- (i) Qu'est-ce qu' Aneesh a annoncé?  
(ii) Qui est né? Comment s'appelle l'enfant?