

CLASS : VI

SUBJECT : COMPUTER SCIENCE

Time : 3 hrs

MM : 80

Q1. Choose the correct answer and write it in the answer sheet: (10x1=10)

(a) How many categories of control statements are there in Small Basic?

- (i) 2 (ii) 3  
(iii) 4 (iv) 5

(b) Which shortcut key is used to make a duplicate of the slide?

- (i) Ctrl + D (ii) Ctrl + G  
(iii) Ctrl + M (iv) Ctrl + C

(c) The term software was first given by \_\_\_\_\_.

- (i) John W. Tukey (ii) John Von Neumann  
(iii) John Mc Carthy (iv) Sundar Pichai

(d) Which among the following statements is considered as bi-directional statement?

- (i) If Else (ii) If then Else  
(iii) Goto (iv) Goto with If Then

(e) Name the founder(s) of flipkart.

- (i) Satya Narayan Nadella  
(ii) Tim Berner's Lee  
(iii) Sundar Pichai  
(iv) Sachin Bansal and Binny Bansal

(f) What is the extension of recorded sound files?

- (i) .wav (ii) .wma  
(iii) .midi (iv) .mpeg

(g) When did Internet Services start in India?

- (i) 15 Aug. 1995      (ii) 15 Aug. 1985  
(iii) 15 Aug. 2005      (iv) 15 Aug. 2003

(h) Which among the following function divides the first number by second and returns the remainder as output?

- (i) Remainder      (ii) Max  
(iii) Min      (iv) Quotient

(i) It converts high level language program into machine language line by line.

- (i) Assembler      (ii) Interpreter  
(iii) Compiler      (iv) Syntax

(j) Which of the following symbols is used to write a comment?

- (i) \$      (ii) .  
(iii) @      (iv) +

Q2. Answer the following statements in one word : (10x1=10)

- (a) A sequence of characters that identifies a location within a program.  
(b) A ready-made button for defining hyperlink on a slide.  
(c) A program written in assembly language.  
(d) It enables people to learn anytime and anywhere using technology.  
(e) Area where we can write program code in Small Basic.  
(f) Checkbox used to continuously play a sound clip.  
(g) The language used by programmers to write computer programs.

- (h) Rules governing the formation of statements in a programming language.
- (i) It is one of the most popular video conferencing applications.
- (j) It defines the order, in which operators are executed in any expression.

**Q3. WAP to check whether the number entered by the user is even or odd (4)**

**Q4. Write short notes on the following : (6x2=12)**

- (a) E-Banking
- (b) Internet T.V.
- (c) Video Conferencing
- (d) Internet Free Calls
- (e) E-learning
- (f) Utility of Math Library. Give 1 example.

**Q5. Fill in the blanks : (5x1=5)**

- (a) Animation effects can be applied on both \_\_\_\_\_ and \_\_\_\_\_ on a slide.
- (b) \_\_\_\_\_ was the first interactive computer game.
- (c) The \_\_\_\_\_ box is used for checking or applying any condition in the program.
- (d) It is essential to connect a \_\_\_\_\_ to the computer while recording your sound.
- (e) \_\_\_\_\_ key combination is used to stop the infinite loop.

**Q6. Differentiate between the following :**

- (a) Interpreter and Compiler (3)
- (b) Comment and Constant (3)
- (c) Writeline ( ) and Write ( ) (2)
- (d) Algorithm and Flowchart (2)

Q7. Explain the following : (3x3=9)

- (a) If Then loop with one example.
- (b) Goto loop with one example.
- (c) Two types of variables in Small Basic

Q8. Answer the following : (5x3=15)

- (a) What is an Action Button? Why do we use it in a slide?
- (b) What is Internet Radio? How is it different from traditional radio?
- (c) What is meant by Animation? How is it helpful in a presentation?

(d) WAP to add two numbers

(e) WAP to check which of the two given numbers is larger

Q9. Answer the following in short : (5x1=5)

- (a) Siddhi is a sales representative. She hardly gets time to visit the bank for transactions. Suggest her the internet service by using which she can do all her banking activities.
- (b) Saanvi has made a presentation 'My Father, My Hero' with 10 slides in it. She wants to import some data from Microsoft Word file. Suggest her the option, using which she can fulfill this task.
- (c) Name any two websites used for E-learning.
- (d) Ronak wants to send a text based message to Manik instantly, which internet service should he use for this?
- (e) Shruti wants to give output of a program in infinite loop. Which statement will you suggest her to use?

ANNUAL EXAMINATION

2/2018

CLASS : VI

SUBJECT : SOCIAL SCIENCE

Time : 3 hrs

MM : 80

General Instructions :

- (i) Read all the questions carefully and number the answers according to the questions.
- (ii) Write all the answers in neat and legible handwriting.
- (iii) Attempt all the questions.
- (iv) Write complete sentences for question numbers 2 and 3.
- (v) Attach the maps properly to the main sheet.
- (vi) Questions carrying 3 marks should be answered within 60-80 words.
- (vii) Questions carrying 5 marks should be answered within 80-100 words.

Q1. Fill in the blanks : (6x1=6)

- (i) \_\_\_\_\_ was the famous Buddhist book providing an account of the Vajji kingdom.
- (ii) Ashoka's inscriptions are written in \_\_\_\_\_ script.
- (iii) \_\_\_\_\_ was the organisation which led the struggle against Apartheid in South Africa.
- (iv) Panchayat President is also known as \_\_\_\_\_.

(v) The deepest point on earth, Mariana Trench lies under the \_\_\_\_\_ ocean.

(vi) \_\_\_\_\_ is the highest plateau in the world.

Q2. Correct the following incorrect statements : (6x1=6)

(i) Aihole was the capital of the Pallavas.

(ii) Ujjain was the gateway to the north-west in Mauryan empire.

(iii) Mettur Dam is located in Karnataka.

(iv) In United Kingdom, women got the right to vote in the year 1920.

(v) Climate is the day to day change in the atmosphere.

(vi) The continent of North America is linked to South America by Strait.

Q3. Answer the following questions in one sentence each:

(8x1=8)

(i) Name any two sites of Janapadas excavated by archaeologists.

(ii) How were empires different from kingdoms?

(iii) Name the two major centres of power of the Kushanas.

(iv) What do you understand by the term 'Apartheid'?

(v) Who is a Municipal councillor?

(vi) List any two continents that lie entirely in the Southern Hemisphere.

- (vii) Which two major rivers fall into the Arabian Sea? (3)
- (viii) Define glacier. (3)
- Q4. Why did Rajas of Mahajanapadas build forts? (3)
- Q5. Describe the means adopted by Ashoka to spread the message of Dhamma. (3)
- Q6. Briefly discuss the term 'Bhakti'. List any two main features of Bhakti. (1+2=3)
- Q7. Write a short note on the ruler Harshavardhana. (3)
- Q8. Explain the various levels of the Panchayati Raj System. (3)
- Q9. Mention the various ways in which the people participate in the process of government. (3)
- Q10. Discuss the composition of the decision making body of Municipal Corporation. (3)
- Q11. How are the humans responsible for disturbing the balance of nature? (3)
- Q12. Distinguish between Western and Eastern Ghats. (3)
- Q13. Describe the main teachings of Buddhism. (5)
- Q14. What is a Gram Sabha? How are the Gram Sabha and Gram Panchayat linked to each other? (1+4=5)
- Q15. 'Government ensures the smooth functioning of a country'. List any five functions of a government. (5)

Q16. Differentiate between Evergreen Forests and Deciduous forests. (5)

Q17. What are plains? Why are plains thickly populated regions of the world? (1+4=5)

Q18. Attempt the following maps :

(a) On the provided political map of India, name and mark the following : (4x1=4)

- (i) Capital of Vajji kingdom
- (ii) Place where Buddha attained enlightenment
- (iii) Place where Ashoka fought his last war
- (iv) Capital of Harsha's empire

(b) On the provided political map of the world, name and mark the following : (4x1=4)

- (i) Most populated country of the world
- (ii) A volcanic mountain in Japan
- (iii) An ocean named after a country
- (iv) An old fold mountain separating Asia and Europe.



CLASS : VI

SUBJECT : ENGLISH

Time : 3 hrs

MM : 80

**General Instructions :**

- (i) Read the questions carefully.
- (ii) Number the answers as given in the question paper.
- (iii) Write in a neat and clear handwriting.
- (iv) Write the answers in complete sentences.

**SECTION-A (READING)**

Q1. Read the passage given below and answer the questions that follow : (7)

Kokrebellur, a small village in the Maddur taluk of Karnataka, offers an unusual sight - some of India's most unusual species of birds can be seen chirping in the backyards of these village homes. Apart from Painted Storks, Spot-Billed Pelicans and breeds like the Little Cormorant, Black Ibis, Grey Heron, Black-Crowned Night Heron and the Indian Pond Heron can be seen here. All these birds nest in the village and live very close to the villagers. They arrive after the monsoon ends in September, hatch their eggs and re-migrate in May. Also in May, one can see many newborn birds learning to fly and the shrill voices of these young ones fill the air. The villagers treat these birds as a part of their families and also think of these birds as signs of prosperity and good luck. They use birds' droppings for their crops because they are rich in phosphorus and potassium. The villagers also make money from tourists who are encouraged to visit the 'man-made bird sanctuary' in the village. However, there are some disadvantages also. As these birds nest in the village regularly, the villagers cannot use the land below the tree for any crop. Therefore, the government of Karnataka compensates the villagers with a certain sum of money for every tree that has the nests of these birds. The government has also established and provided grants to the Village Forest Committee (VFC) to protect the birds by looking after the trees on which they nest. The people of Kokrebellur have set an exceptional example of how humans and animals can live together happily in a beautiful way.

- (a) Describe the unusual sight in Kokrebellur. (1)
- (b) What are the two things that take place in the month of May? (2)
- (c) Why do the villagers think that birds bring them prosperity? (1)

- (d) Why does the government of Karnataka compensate the villagers? (1)
- (e) What do we learn from the people of Kokrebellur? (1)
- (f) Find words from the passage which mean the same as given below : (2x½=1)
- (i) not typical (ii) set up on a firm or permanent basis

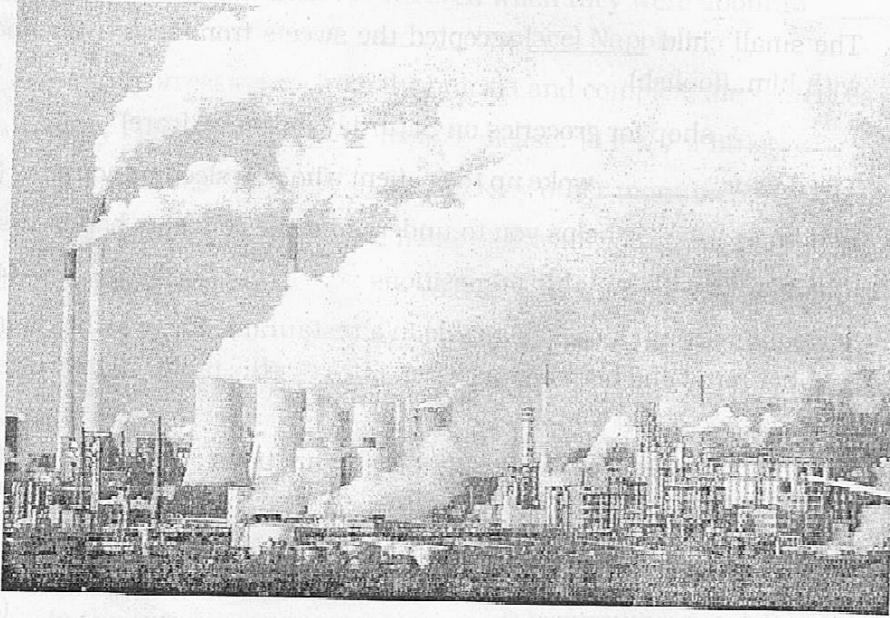
Q2. Read the poem given below and answer the questions that follow : (6)

Through my window, an alien drops in  
 His single antenna buzzing, sharp as a pin.  
 Vibrations humming and lights beaming at me  
 I wake up, startled, rubbing eyes to see.  
 He speaks not a word - I cannot see his mouth  
 Gestures at his antenna. 'Come with me, South.'  
 Though jittery and trembling, I jump on the sill,  
 Fear clutching my throat, like a large stuck pill.  
 Poised on the edge, we take a huge leap.  
 Into space I am flying, I am not asleep.  
 Twisting and turning, on a meteoric trail.  
 Suns, moons, and stars, new worlds we hail.  
 On and on, up and down, over and under.  
 Past comets and asteroids, we smoothly meander.  
 At last my eyelids, droop and ache  
 And I plunge into a soft, velvety lake of sleep.  
 When the day breaks, and I rise at dawn  
 My alien friend by then, has flown and gone.  
 But I am sure, it was he  
 As on my pillow, I can see,  
 Glittery sparks of starry dust  
 To remember him, I know I must.

- (a) What woke up the poet? (1)
- (b) How did the alien communicate with the poet? (1)
- (c) Where did the alien take the poet? (1)
- (d) What did the poet do when his eyelids began to droop? (1)
- (e) Why did the poet believe the next morning that an alien had come to meet him the previous night? (1)
- (e) Find words from the poem which mean the same as given below : (2x½=1)
- (i) jump or dive quickly (ii) to hang down

**SECTION-B (WRITING)**

- Q3. Look at the given picture carefully and write a paragraph in about 100 words. Also, give it a suitable title. (4)



- Q4. You are Janvi. Your father had recently gone for a health check-up. You received the call when the doctor rang up to give the report. As you have to go out, you leave a message for him. Draft a message in not more than 50 words. (4)

Dr. Geeta : Is it 67890477?

You : Yes, it is. May I know who is calling?

Dr. Geeta : I am Dr. Geeta Trehan from Trehan Surgical Centre and Nursing Home. I would like to talk to Mr. Uday.

You : He is not here at this moment.

Dr. Geeta : Could you please tell him that I have gone through all his test reports? They do not show any serious problem. If no improvement is seen during that period, we will go for some more tests. I feel he should continue the same medicine for another one week. However, I have fixed an appointment with the Heart Specialist for two o'clock tomorrow at XT Hospital. He must come there by the appointed time with his reports.

You : Thank you, Doctor. I shall convey your message when he comes.

- Q5. Write an application to the Principal of your school on behalf of the students of your class to introduce 'Martial Arts' classes in your school. (6)

### SECTION-C (GRAMMAR)

Q6. Fill in the blanks with adverbs formed from the adjectives given in brackets :  
(4x½=2)

- (a) The small child \_\_\_\_\_ accepted the sweets from a stranger and went with him. (foolish)
- (b) I \_\_\_\_\_ shop for groceries on Saturday morning. (rare)
- (c) The doctor \_\_\_\_\_ woke up the patient who was sleeping soundly. (gentle)
- (d) Reading \_\_\_\_\_ helps you to understand the concepts better. (usual)

Q7. Fill in the blanks with suitable prepositions :  
(4x½=2)

I saw a woman sitting \_\_\_\_\_ a table in a restaurant. She was holding a mug \_\_\_\_\_ her hand and her bag was lying \_\_\_\_\_ the table. There was another chair kept \_\_\_\_\_ the woman.

Q8. Join each pair of sentences using suitable conjunctions :  
(2x1=2)

- (a) Smita is very sincere. She lacks experience.
- (b) Global warming must be controlled. All the glaciers will melt.

Q9. Punctuate the given sentences :

when we lived in london our neighbour, Mr. Verma helped us a lot

Q10. Write the given sentences in their passive voice :  
(2x1=2)

(a) I called Raju last night.

(b) The teacher will not explain the poem again.

Q11. Fill in the blanks with a single word with the same meaning as the words in brackets:  
(4x½=2)

(a) Indians are following the customs for more than a \_\_\_\_\_ (hundred years)

(b) Nobody wanted to lend money to Arjun because he was a \_\_\_\_\_ (a person who spends a lot)

(c) The king could win the battle because of his strong \_\_\_\_\_ (soldiers who fight on horseback)

(d) Thousands of \_\_\_\_\_ visit this temple every year. (people visiting a holy place)

Q12. Rearrange the words to make meaningful sentences :  
(2x1=2)

(a) embroidered/for/Shikha/beautiful/a/her/handkerchief/mother

(b) not/bed/life/a/roses/is/of

Q13. Fill in the blanks with the correct form of the verbs given in brackets : (6x½=3)

Napoleon \_\_\_\_\_ (be) a very caring general. He always \_\_\_\_\_ (feel) anxious about the welfare of his soldiers. His soldiers also \_\_\_\_\_ (love) him. This love \_\_\_\_\_ (remain) in their hearts even when they were about to \_\_\_\_\_ (die). No other general could ever \_\_\_\_\_ (replace) Napoleon.

Q14. Choose the correct option from the bracket and complete the sentences : (6x½=3)

- (a) May I give you \_\_\_\_\_ trouble please? (a few / a little)
- (b) These caves are \_\_\_\_\_ than many other monuments. (elder / older)
- (c) Can you \_\_\_\_\_ me the name of the author of this book? (tell / say)
- (d) Reema's dress was \_\_\_\_\_ old to be worn to the wedding. (too / very)
- (e) There is \_\_\_\_\_ any money left in his account. (hard / hardly)
- (f) The audience ran \_\_\_\_\_ when the fire alarm was rung. (fast / fastly)

**SECTION-D (LITERATURE)**

Q15. Read the extracts given below and answer the questions that follow :

(A) 'Eight years have passed' (3x1=3)

Since I placed my Cherry seed  
in the grass'

- (a) Name the poem from which the above lines have been taken. Also, name the poet.
- (b) Who does the word 'I' refer to in the above lines?
- (c) What happened to the cherry seed after the poet placed it in the grass?

(B) 'He is very violent, especially with the boys who come late'. (3x1=3)

- (a) Name the chapter from which the above lines have been taken. Also, name the author.
- (b) Who does the word 'he' refer to in the above lines?
- (c) Is the description given in the above lines appropriate?

Q16. Answer any THREE out of FOUR questions in 30-40 words each : (3x2=6)

- (a) Swami wanted his teacher to punish him. Why?
- (b) What were the different clues that proved Gilchrist to be the real culprit?
- (c) What advice did the artist give to Sally at the end of the story?
- (d) One morning, the narrator observed a sudden change in the face on his wall. What was the change and why did it take place?

Q17. Answer any TWO out of THREE questions in 30-40 words each : (2x2=4)

- (a) In the poem 'The Cookie Thief' the woman was greatly surprised when she boarded the flight. Why?
- (b) The fly in the poem 'The Spider and the Fly' is described as a poor foolish thing. Do you agree? Why/Why not?
- (c) Why did the people gather in Bishop's barn? How did the Bishop treat them?

Q18. Answer the following question in 70-80 words : (1x4=4)

Paying attention to the flatterers can lead to our downfall. Discuss the statement with reference to the poem 'The Spider and the Fly'.

OR

God judges us and rewards us for how we treat our fellow men. Discuss with reference to the poem 'Bishop Hatto'.

Q19. Answer the following questions in 80-100 words : (1x5=5)

Imagine you are Konrad. Write a diary entry to express your experience and feelings when the doctor advised you not to participate in the next round of the equestrian event. What did you do after that?

OR

In the chapter, 'The Case of Copied Question Papers', what was the disturbing incident that took place in Soames' room? Who solved the mystery and how?

Q20. Answer the following question in 30-40 words : (1x3=3)

How did the Captain of the ship discover the floating box in which Gulliver escaped?

Q21. Answer the following question in 80-100 words : (1x5=5)

What were the different tricks performed by Gulliver for the spectators? Why did he get tired at end?

OR

How did Gulliver read the huge books in the King's library?

CLASS : VI

SUBJECT : SCIENCE

Time : 3 hours

MM : 80

*General Instructions :*

- (i) *All questions are compulsory.*
- (ii) *Mention correct question number and part for each answer.*
- (iii) *Attempt the questions in the same sequence as given in question paper.*

**PART-A**

Q1. Answer the following in one word or one sentence each:

(15x1=15)

- (a) 'X' is a deficiency disease caused due to lack of iodine in our diet. Identify 'X'.
- (b) Define atmosphere.
- (c) Tripti comes across an animal having a streamlined body with scales. What is the habitat of this animal?
- (d) Give two examples of luminous objects.
- (e) Mention two components of food that do not provide nutrients but are essential for our body.
- (f) Radhika bought some vegetables such as french beans, lady finger, green chillies, brinjals and potatoes all mixed in a bag. Which method should she use to separate them?
- (g) Differentiate between bone and cartilage.
- (h) A magnet has maximum strength near its ends. What are these points having maximum strength called as?

(1)

- (i) Name a shape which would give a circular shadow if held in one way and a rectangular shadow if held in another way.
- (j) We should not breathe through our mouth. Justify.
- (k) An earthworm has tiny hair like structures projecting out under its body which help it to get a grip on the ground. What are these structures called?
- (l) Which method of separation is used to obtain salt from sea water?
- (m) How should a horse shoe shaped magnet be stored?
- (n) Name the major component of air which doesn't support burning.
- (o) In a completely dark room, if we hold a mirror in front of us, will we see a reflection of ourself in the mirror? Explain.

Q2. Fill in the blanks : (5x1=5)

- (a) Scarcity of rainfall causes \_\_\_\_\_.
- (b) The habitat of plants and animals that live on land is called \_\_\_\_\_ habitat.
- (c) Like poles of a magnet \_\_\_\_\_ each other.
- (d) The method of separating grains from stalks is called \_\_\_\_\_.
- (e) Joint at which bones are joined together such that it does not allow any movement is called \_\_\_\_\_.

Q3. Give a technical term for the following : (5x1=5)

- (a) A diet which contains all the nutrients in right proportion.
- (b) A framework formed by all the bones in our body to give a shape to our body.



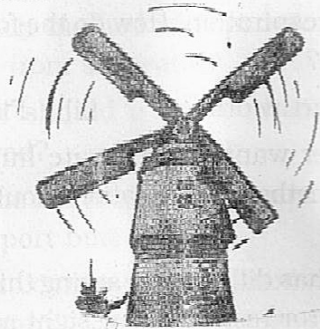
- (c) A solution in which no more solute can be dissolved in a solvent at a particular temperature.
- (d) The surroundings where plants and animals live.
- (e) An instrument with a magnetized needle used for finding direction.

**PART-B**

Q4. Answer briefly : (10x2=20)

- (a) Define respiration. How do the following animals breathe?
  - (i) Earthworm
  - (ii) Fish
- (b) A farmer wants to separate husk from grains. Which method of separation should he use? Define it.
- (c) Boojho has difficulty in seeing things in dim light. The doctor tested his eyesight and prescribed a particular vitamin supplement. He also advised him to include a few food items in his diet.
  - (i) Which deficiency disease is he suffering from?
  - (ii) Which vitamin would be lacking in his diet?
  - (iii) Suggest any two items that he should include in his diet.
- (d) Differentiate between magnetic and non-magnetic materials. Give examples.
- (e) Define deficiency diseases. What are the symptoms shown by a child whose diet is deficient in both carbohydrates and proteins for a long period of time?
- (f) Write any two adaptations which help a camel to live in deserts.
- (g) 'A' is a tall, cone shaped tree with sloping branches. It has small, needle like leaves.

- (i) What is the habitat of 'A'?
  - (ii) What is the advantage of having sloping branches for tree 'A'.
  - (iii) Give two examples of animals found in habitat 'A'.
- (h) Identify the figure given below and write its any two uses.



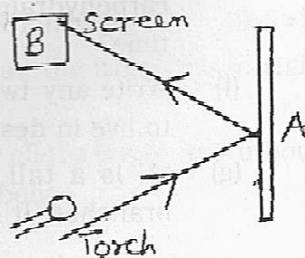
- (i) Write any two features of the image obtained through a pinhole camera. State the principle on which a pinhole camera works.
- (j) Mohit and Rohit went to the zoo on a day's tour. Rohit was fascinated by the three lions in their enclosure while Mohit started making noises and hurling stones at them thus, irritating them. Rohit strongly objected to this behaviour.
  - (i) What is the natural habitat of a lion?
  - (ii) Which value is shown by Rohit?

Q5. Answer the following :

(5x3=15)

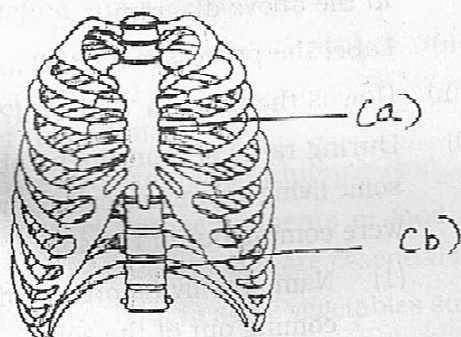
- (a) Observe the given picture carefully:

A patch of light is obtained at B, when the torch is lighted as shown.



(4)

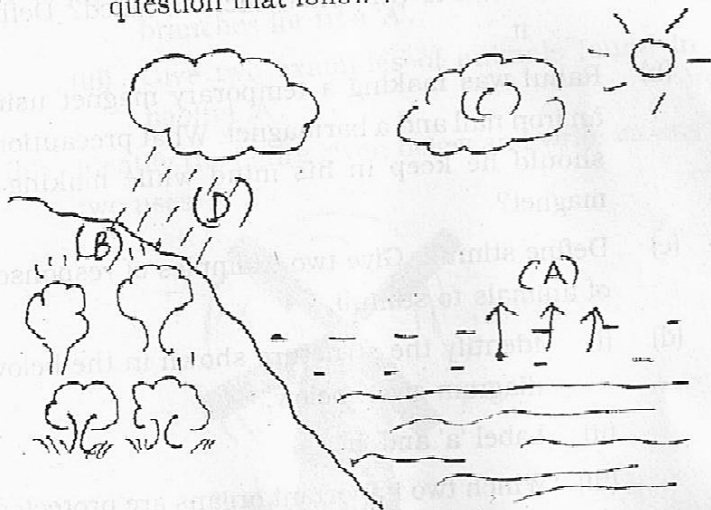
- (i) What is kept at position A to get this patch of light?
- (ii) What is this phenomenon called? Define it.
- (b) Rahul was making a temporary magnet using an iron nail and a bar magnet. What precautions should he keep in his mind while making a magnet?
- (c) Define stimuli. Give two examples of responses of animals to stimuli.
- (d) (i) Identify the structure shown in the below diagram given below.  
 (ii) Label 'a' and 'b'.  
 (iii) Which two important organs are protected by this structure?



- (e) What is the need to do separation of substances? Give three reasons.
- Q6. Draw neat and well-labelled diagrams of: (4+3+3=10)
- (i) Sedimentation and Decantation  
 (ii) Pinhole camera  
 (iii) Composition of air

Q7. Answer the following questions : (5x2=10)

(a) Study the diagram given below and answer the question that follow :



- (i) Name and define the process represented in the above diagram.
- (ii) Label the processes A, B, C and D.
- (iii) How is the process 'C' useful?
- (b) (i) During rainy season Sneha observed that some living organisms called farmer's friend were coming out of the soil.
- (1) Name the living organisms that were coming out of the soil.
- (2) Why do they come out from the soil during rainy season?
- (3) How can you prove that soil contains air?
- (ii) How are plants and animals interdependent on each other?

Time : 3 hrs

MM : 80

General Instructions :

- (i) Read all the questions carefully.
- (ii) Number the answers as given in the question paper.
- (iii) Write in a neat and clear handwriting.
- (iv) Write the answers in complete sentences.

**SECTION A [COMPRÉHENSION ÉCRITE]**

A1. Lisez et répondez :

Mes amis de différentes nationalités

Voilà le premier jour de l'école! Les élèves de l'école sont heureux.

Voilà la petite Caroline dans le cours. Elle est anglaise.

Elle a 11 ans. Caroline est jolie.

Martha est japonaise et elle a 12 ans. Elle est grande.

Elle joue avec Caroline.

Elles aiment la France.

Jean - Pierre est français. Il a 11 ans. Il habite à Nice. Il

est sympathique. Il donne les bonbons à Caroline et Martha.

Ils parlent anglais et français. Ils sont des amis.

A1.1 Dites vrai ou faux. (3x1=3)

- (a) Les élèves sont heureux.
- (b) Martha et Caroline n'aiment pas la France.
- (c) C'est le premier jour de l'école.

A1.2 Choisissez la bonne réponse. (3x1=3)

- (a) Caroline est :
  - (i) laide
  - (ii) petite
  - (iii) jolie
- (b) Ils parlent :
  - (i) anglais
  - (ii) hindi
  - (iii) chinois

(c) Jean-Pierre donne les \_\_\_\_\_ à Caroline et Martha.

- (i) fruits (ii) bonbons  
(iii) glaces

A1.3 Trouvez dans le texte : (2x1=2)

- (a) Deux verbes en 'er' : \_\_\_\_\_, \_\_\_\_\_  
(b) Deux nationalités : \_\_\_\_\_, \_\_\_\_\_

A2. Lisez :

Voilà Olivia!

Elle s'appelle Olivia. Elle est petite et mince. Elle est étudiante. Elle est française. Elle habite à Lyon en France. Elle parle anglais, français et un peu d'espagnol. Elle aime danser et nager. Elle aime la couleur rouge. Elle aime manger le fromage et les fruits. Elle déteste les mathématiques et la tomate. Elle a un chien et un chat. Le chien est blanc et le chat est noir. Ils sont jolis.

A2.1 Dites vrai ou faux. (3x1=3)

- (a) Olivia a deux chats.  
(b) Olivia est professeur.  
(c) Le chat est blanc.

A2.2 Choisissez la bonne réponse. (3x1=3)

- (a) Olivia habite à :  
(i) Paris (ii) Lille  
(iii) Lyon  
(b) Elle déteste :  
(i) la tomate (ii) les fruits  
(iii) la viande  
(c) Elle aime la couleur :  
(i) rose (ii) rouge  
(iii) bleue

A2.3 Donnez le contraire du texte. (2x½=1)

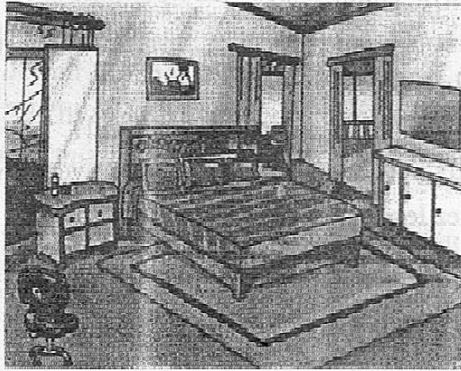
- (a) déteste ≠ \_\_\_\_\_  
(b) grosse ≠ \_\_\_\_\_

(2)

**SECTION-B [EXPRESSION ÉCRITE]**

- B1. Nommez et dessinez cinq vêtements pour les femmes. (5)  
B2. Décrivez votre maison. (5)  
B3. Nommez et dessinez cinq choses qu'on trouve dans la cuisine. (5)  
B4. Regardez les images et répondez. (3+2=5)

(a)



- (i) Nommez trois choses que vous voyez.

(b)



- (i) Qu'est-ce que c'est?  
(ii) Qu'est-ce qu'il y a ici?

**SECTION-C [GRAMMAIRE]**

- C1. Choisissez et écrivez la bonne réponse. (10x½=5)  
(a) C'est \_\_\_\_\_ table. (un, des, une)  
(b) Le chat est \_\_\_\_\_ la chaise. (dans, sous, contre)

- (c) Nous écrivons dans \_\_\_\_\_ cahier. (notre, nos, votre)
- (d) Elle parle à \_\_\_\_\_ mère. (son, ses, sa)
- (e) Elle mange \_\_\_\_\_ pomme. (de la, du, de l')
- (f) Ils ne boivent pas \_\_\_\_\_ lait. (de, de la, des)
- (g) Il y a une carte de la France \_\_\_\_\_ le mur. (sur, contre, sous)
- (h) C'est le chapeau \_\_\_\_\_ grand-père. (de la, des, du)
- (i) J'aime \_\_\_\_\_ fruits. (les, la, l')
- (j) Vous portez \_\_\_\_\_ chapeau. (votre, vos, mon)

C2. Conjuguez les verbes au présent. (5x1=5)

- (a) Nous \_\_\_\_\_ (voyager) ce matin.
- (b) Il \_\_\_\_\_ (finir) le devoir.
- (c) Elles \_\_\_\_\_ (danser) bien.
- (d) Je \_\_\_\_\_ (dire) bonjour au professeur.
- (e) Vous \_\_\_\_\_ (vouloir) du thé?

C3. Mettez au négatif. (3x1=3)

- (a) Elle mange de la viande.
- (b) Nous détestons les légumes.
- (c) Ils regardent le film à la télévision.

C4. Conjuguez le verbe 'sortir' (à l'affirmatif) (3)

C5. Écrivez en nombres ordinaux. (6x½=3)

- (a) 6<sup>e</sup> = \_\_\_\_\_ (b) 9<sup>e</sup> = \_\_\_\_\_
- (c) 3<sup>e</sup> = \_\_\_\_\_ (d) 2<sup>e</sup> = \_\_\_\_\_
- (e) 7<sup>e</sup> = \_\_\_\_\_ (f) 4<sup>e</sup> = \_\_\_\_\_

C6. Transformez les questions en utilisant, <<Est-ce que...?>> ou <<Est-ce qu'...?>>. (3x1=3)

- (a) Nous allons au marché?
- (b) Ils regardent la télé?
- (c) Sophie est anglaise?



- C7. Trouvez la question. (2x1=2)  
(a) C'est mon amie.  
(b) Il a douze ans.
- C8. Retrouvez les phrases. (2x1=2)  
(a) gâteaux/Elle/les/adore  
(b) n'/allons/à/Nous/école/l'/pas
- C9. Corrigez la faute. (2x1=2)  
(a) Je voit un chat.  
(b) Elle lit sa journaux.
- C10. Chassez l'intrus. (2x1=2)  
(a) le café, le beurre, le thé, le lait  
(b) le déjeuner, le goûter, la viande, le diner.

**SECTION-D [LA CULTURE ET LA CIVILISATION]**

- D1. Dites vrai ou faux. (5x1=5)  
(a) Il faut respecter nos instituteurs.  
(b) Manuel habite avec ses parents.  
(c) Il ne faut pas arriver à l'heure pour l'école.  
(d) Mme Lavigne met du jus de fruits dans le frigo.  
(e) Les vêtements de femme et de fille sont au troisième étage.
- D2. Choisissez et écrivez la bonne réponse. (10x½=5)  
(a) Manuel adore le cours de :  
(i) français (ii) musique  
(iii) dessin  
(b) Catherine va dans un grand magasin avec :  
(i) son père (ii) son amie  
(iii) sa mère  
(c) Aneesh déteste le :  
(i) coca (ii) jus de fruits  
(iii) lait  
(d) Manuel aime :  
(i) sa maison (ii) son appartement  
(iii) sa cuisine

- (c) Les amis de Manuel viennent à la maison pour le :
- (i) goûter (ii) diner  
(iii) déjeuner
- (f) Catherine préfère la couleur :
- (i) rouge (ii) rose  
(iii) verte
- (g) L'école de Manuel est :
- (i) grande (ii) assez grande  
(iii) petite
- (h) La chambre de Manuel est assez grande avec \_\_\_\_\_ lits.
- (i) trois (ii) deux  
(iii) quatre
- (i) Mme Lavigne fait :
- (i) un sandwich (ii) un gâteau  
(iii) une tartine
- (j) Catherine est \_\_\_\_\_ de sa jupe.
- (i) triste (ii) contente  
(iii) mécontente

D3. Reliez :

(10x½=5)

- |               |                           |
|---------------|---------------------------|
| (a) sur       | (i) le meuble             |
| (b) boire     | (ii) le légume            |
| (c) le diner  | (iii) le repas            |
| (d) la robe   | (iv) l'adjectif possessif |
| (e) neuvième  | (v) la préposition        |
| (f) la table  | (vi) le verbe             |
| (g) la tomate | (vii) le vêtement         |
| (h) leur      | (viii) la maison          |
| (i) des       | (ix) le nombre ordinal    |
| (j) le salon  | (x) l'article partitif    |

समय : 3 घंटे

पूर्णांक : 80

खण्ड - 'क'

प्र1. निम्नलिखित गद्यांश को पढ़कर नीचे लिखे प्रश्नों के उत्तर लिखिए :-

देश-प्रेम स्वाभाविक भी है और हमारे ऊपर देश का अधिकार भी है। जिस प्रकार हम अपने माता-पिता के उपकारों का बदला नहीं चुका सकते, उसी प्रकार देश के उपकारों का बदला नहीं चुकाया जा सकता। देश-प्रेम का अर्थ है - देश की संस्थाओं से प्रेम, देश के रीति-रिवाज, भाषा, वेशभूषा, भूमि आदि से प्रेम और उनके प्रति गर्व और अपनत्व की भावना का अनुभव करना। सच्चे देश-प्रेमी के लिए अपने देश की भिदूटी का कण-कण पवित्र होता है। उसकी भाषा का माधुर्य उसके लिए अमृत के समान होता है और वहाँ का रहन-सहन, वेश-भूषा, फल-फूल और वृक्ष सभी उसे अपनी ओर आकर्षित करते हैं। जहाँ देश के प्रति हमारा प्रेम है, वहाँ उसके प्रति हमारा कर्तव्य भी है। देश-प्रेम केवल भावना मात्र नहीं है, वरन् अपने स्वार्थों से ऊपर उठ देश की सच्ची सेवा है। देश की राजनैतिक, सामाजिक, आर्थिक और आध्यात्मिक उन्नति में सहयोग देना प्रत्येक देश-प्रेमी का कर्तव्य है।

(क) देश-प्रेमी के लिए देश के प्रति प्रेम केवल एक भाव न होकर और क्या है? (1)

(ख) देशवासियों पर किसका अधिकार होता है? (1)

(ग) देश-प्रेमी को अपने देश की कौन-कौन सी बातें अच्छी लगती हैं? (2)

(घ) मनुष्य किस-किस के उपकारों का बदला नहीं चुका सकता? (1)

प्र2. निम्नलिखित काव्यांश को पढ़कर नीचे दिए गए प्रश्नों के उत्तर लिखिए :-

सुबह-सघेरे ढेरों खबरें,

लेकर आ जाता अखबार।

पहले पढ़ने की छीन-झपट में,

फटा-फटा जाता अखबार।

अपने देश और बाहर का,

हाल बता जाता अखबार।

कथा-चुटकुले छुट्टी के दिन,

लेकर के आता अखबार।

(1)

ताज़ा-ताज़ा होने पर ही,  
सबको भाता है अखबार।  
बासी हुआ कबाड़ी को,  
आवाज़ लगाता है अखबार।

- (क) कवि के अनुसार अखबार फटा-फटा क्यों हो जाता है? (1)  
(ख) अखबार में क्या-क्या छपा होता है? (1)  
(ग) अखबार सबको कब भाता है? (1)  
(घ) 'कबाड़ी को आवाज़ लगाता है अखबार' का क्या अर्थ है? (2)

**खण्ड - 'ख'**

- प्र3. (क) निम्नलिखित वाक्यों में कारक चिह्न रेखांकित कर भेद का नाम लिखिए :- (2)  
(i) अध्यापिका श्यामपट्ट पर लिख रही हैं।  
(ii) माँ चम्मच से खाना परोस रही हैं।  
(ख) पुरुषवाचक सर्वनाम का एक उदाहरण वाक्य के रूप में लिखिए। (1)  
(ग) निम्नलिखित शब्दों से विशेषण बनाइए :- (1)  
चमक, भीतर
- प्र4. (क) निम्नलिखित वाक्यों में क्रिया रेखांकित कर भेदों के नाम बताइए :- (2)  
(i) रोहित पुस्तक पढ़ रहा है।  
(ii) बच्चा सो रहा है।  
(ख) निम्नलिखित वाक्यों में क्रिया-विशेषण रेखांकित कर भेदों के नाम लिखिए :- (2)  
(i) पक्षी ऊपर उड़ गया।  
(ii) रोहन शाम को घर लौटा।  
(ग) निम्नलिखित शब्दों के भिन्न अर्थ लिखिए :- (1)  
हँस - हंस
- प्र5. (क) निम्नलिखित शब्दों के दो-दो पर्यायवाची शब्द लिखिए :- (2)  
पवन, माता  
(ख) निम्नलिखित शब्दों के विलोम शब्द लिखिए :- (2)  
न्याय, सुपुत्र, आयात, मान

- (ग) निम्नलिखित वाक्यांशों के लिए एक शब्द लिखिए :- (1)
- (i) देखने वाला
- (ii) जो चित्र बनाता हो
- (घ) निम्नलिखित मुहावरे से वाक्य बनाइए :- (1)
- गले लगाना

खण्ड - 'ग'

प्र6. निम्नलिखित काव्यांश को पढ़कर नीचे लिखे प्रश्नों के उत्तर दीजिए :

जाओ रानी याद रखेंगे हम कृतज्ञ भारतवासी,  
 यह तेरा बलिदान जगावेगा स्वतंत्रता अविनाशी,  
 होवे चुप इतिहास, लगे सच्चाई को चाहे फाँसी,  
 हो मदमाती विजय, मिटा दे गोलों से चाहे झाँसी,  
 तेरा स्मारक तू ही होगी,  
 तू खुद अमिट निशानी थी।  
 बुंदेले हरबोलों के मुँह  
 हमने सुनी कहानी थी।  
 खूब लड़ी मर्दानी वह तो  
 झाँसीवाली रानी थी।

- (क) भारतवासी किसके प्रति कृतज्ञ हैं और क्यों? (2)
- (ख) 'बुंदेले हरबोले' कौन थे? (1)
- (ग) झाँसी की रानी के लिए 'मर्दानी' शब्द का प्रयोग क्यों किया गया है? (1)
- (घ) 'तेरा स्मारक तू ही होगी' पंक्ति का अर्थ बताइए। (1)
- प्र7. (क) 'वन के मार्ग में' कविता की भाषागत विशेषताएँ लिखिए। (2)
- (ख) 'साथी हाथ बढ़ाना' कविता का मूलभाव लिखिए। (2)
- (ग) 'बूढ़े भारत में आई फिर से नई जवानी थी' पंक्ति का आशय स्पष्ट कीजिए। (2)

प्र8. निम्नलिखित गद्यांश को पढ़कर दिए गए प्रश्नों के उत्तर दीजिए :

पिछली सदी में तेज़ रफ़्तार वाली गाड़ी वही थी। कभी-कभी हवाई जहाज़ भी देखने को मिलते। दिल्ली में जब भी उनकी आवाज़ आती, बच्चे उन्हें देखने बाहर दौड़ते। दीखता एक भारी-भरकम पक्षी उड़ा जा रहा है पंख फैलाकर। यह

देखो और वह गायब। उसकी स्पीड ही इतनी तेज़ लगती। हाँ, गाड़ी के मॉडल वाली दुकान के साथ एक और ऐसी दुकान थी जो मुझे कभी नहीं भूलती। यह वह दुकान थी जहाँ मेरा पहला चश्मा बना था। वहाँ आँखों के डॉक्टर अंग्रेज़ थे।

- (क) दिल्ली में बच्चे किसे देखने के लिए बाहर दौड़ पड़ते थे? (1)  
(ख) लेखिका को कौन-सी दुकान कभी नहीं भूलती? उस दुकान की क्या विशेषता थी? (2)

प्र9. निम्नलिखित प्रश्नों के उत्तर विस्तारपूर्वक लिखिए :- (3x3=9)

- (क) गांधी जी को किसने और कहाँ भोज पर बुलाया था? वहाँ उन्होंने क्या किया?  
(ख) 'टिकट अलबम' पाठ में राजप्पा के व्यवहार में क्या-क्या परिवर्तन आए और क्यों?  
(ग) बैरिस्टरी से हज़ारों रुपये कमाते हुए भी गांधी जी क्या करते थे और उस काम में कौन-कौन उनका हाथ बँटाता था? इसके अतिरिक्त वे किस काम में घंटों मेहनत करते थे?

प्र10. (क) निम्नलिखित शब्दों के अर्थ लिखिए :- (2)

कालगति, धीर, योली, हाज़ुमा

(ख) निम्नलिखित शब्दों का वाक्यों में प्रयोग कीजिए :- (2)

संगीत, जमघट

प्र11. 'टिकट अलबम' कहानी में राजप्पा ईर्ष्या के कारण नागराजन के अलबम को जला देता है। क्या आपने भी कभी अपनी ईर्ष्या के कारण किसी व्यक्ति को या उसकी किसी वस्तु को नुकसान पहुँचाया है? उस गलती का पश्चात्ताप आपने कैसे किया? अपने अनुभव के आधार पर लिखिए। (3)

अथवा

'वन के मार्ग में' सीता जी की वन में क्या दशा हुई? क्या आपके साथ कभी ऐसा हुआ है? अपना अनुभव लिखिए।

प्र12. निम्नलिखित प्रश्नों के उत्तर 'संक्षिप्त रामायण' के आधार पर लिखिए :-

- (क) राम राज्य को आदर्श राज्य क्यों माना जाता था? (2)  
(ख) हनुमान जी ने अपना कर्तव्य निभाते हुए सीता जी का विश्वास किस प्रकार जीता? एक आदर्श विद्यार्थी का क्या कर्तव्य होता है? क्या आप उसे पूरा कर रहे हैं? अपना अनुभव लिखिए। (3)

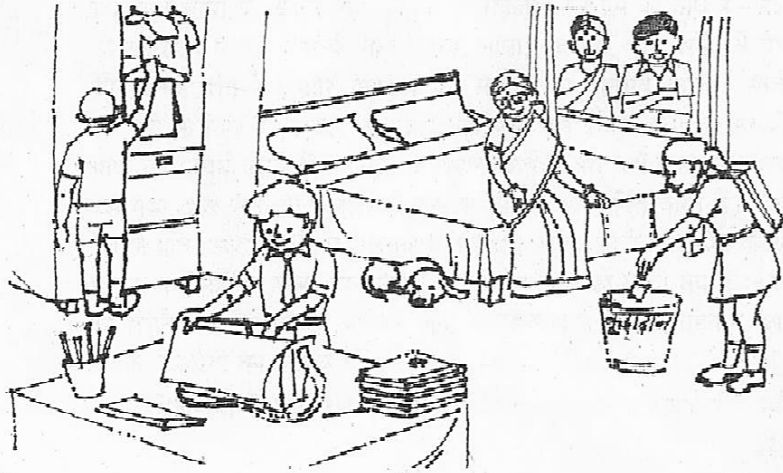
अथवा

(4)

समुद्र पर सेतु बनाने की कला कौन जानता था? क्या आपने कभी परिक्षम से कठिन कार्य को संभव किया है? अपना अनुभव लिखिए।

खण्ड - 'घ'

- प्र13. पुस्तकें पढ़ने के लिए प्रेरित करते हुए पिता और पुत्र में हुई बातचीत को संवाद के रूप में लिखिए। (4)
- प्र14. 'प्रकाश' बल्ब के लिए सुंदर व आकर्षक विज्ञापन बनाइए। (3)
- प्र15. नीचे दिए गए चित्र को देखकर 25-30 शब्दों में अनुच्छेद लिखिए। (3)



- प्र16. आपकी माताजी ने 'सुंदर कांड' का पाठ रखा है। इस अवसर पर अपने मित्र को आमंत्रित करते हुए पत्र लिखिए। (5)

अथवा

किसी गरीब की सहायता करने के लिए प्रेरित करते हुए अपने भाई को पत्र लिखिए।

- प्र17. निम्नलिखित विषयों में से किसी एक विषय पर 250 शब्दों में निबंध लिखिए:- (5)

- (क) जीवन में खेलकूद का महत्त्व  
(ख) पक्षी की आत्मकथा  
(ग) स्वच्छ भारत, स्वस्थ भारत

ANNUAL EXAMINATION

3/2018

CLASS : VI



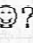
SUBJECT : MATHEMATICS

Time : 3 hrs

MM : 80

General Instructions :

- (i) All questions are compulsory.
- (ii) Read all questions very carefully.
- (iii) Questions 1 to 10 carry 1 mark each.
- (iv) Questions 11 to 18 carry 2 marks each.
- (v) Questions 19 to 28 carry 3 marks each.
- (vi) Questions 29 to 34 carry 4 marks each.

- Q1. Write as decimals : One hundred and seven tenths
- Q2. Write the successor of  $(-9)$ .
- Q3. Find the perimeter of an equilateral triangle with side 15cm.
- Q4. Give expression for : '8 subtracted from  $(-p)$ '
- Q5. Write as a fraction : 2.3
- Q6. Draw a circle of radius 4 cm.
- Q7. Find the ratio of 880 to 630
- Q8. Find the rule which gives the number of matchsticks required to make a pattern of letter 
- Q9. Express as a mixed fraction :  $\frac{11}{4}$
- Q10. In a pictograph, if 1  represents 15 books, then how many books are represented by 10 ?
- Q11. Find the sum of  $(-14)$ ,  $(80)$  and  $(14)$ .



Q12. Write  $\frac{12}{5}$  as a decimal.

Q13. Find the length of the rectangle whose perimeter is 100cm and breadth is 10cm.

Q14. (a) Take Renu's age to be 'x' years. What is Renu's father's age if he is 3 years more than 4 times Renu's age.

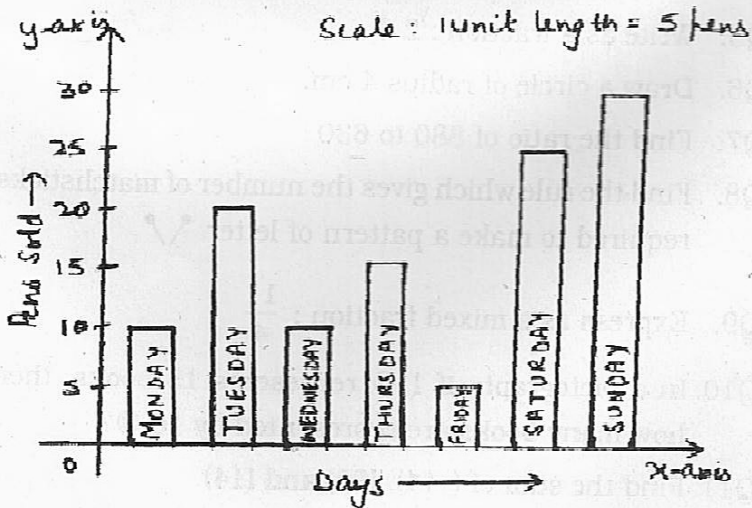
(b) State whether the following is an equation (with a variable) or not :  $\frac{4}{2} = 2$

Q15. The graph below shows the sale of pens in a stationery shop from Monday to Sunday. Answer the following questions based on the graph :

(a) On which two days was the sale of pens same?

(b) (i) On which day was the sale of pens maximum?

(ii) How many pens were sold on Thursday?



Q16. Ram had ₹ 14.60. He bought vegetables for ₹ 8.45.  
Find the balance amount left with Ram.

Q17. Draw a line segment of length 6cm and construct its perpendicular bisector.

Q18. Fill in the blanks :  $\frac{6}{9} = \frac{\square}{3} = \frac{8}{\square}$

Q19. Seema wants to cover the floor of a room 4m wide and 5m long by squared tiles. If each square tile is of side 0.5m, then find the number of tiles required to cover the floor of the room.

Q20. Use number line and add :  $(-2) + (-4) + 5$

Q21. Divide ₹ 80 in the ratio 1:3 between Mary and John.

Q22. Pooja, Palak and Mehak are climbing the steps to the hill top. Mehak is at step 'p', Pooja is 10 steps ahead of Mehak and Palak is 5 steps behind Mehak.

(a) Where are Pooja and Palak?

(b) If the total number of steps are 10 less than 4 times what Mehak has reached. Express the total number of steps using p.

Q23. (a) If the cost of a dozen bananas is ₹ 84. Find the cost of 30 bananas.

(b) Give one equivalent ratio of 8:7.

Q24. Given  $\overline{AB}$  of length 8.4cm and  $\overline{CD}$  of length 4.5cm. Construct a line segment  $\overline{XY}$  such that the length of  $\overline{XY}$  is equal to the difference between the lengths of  $\overline{AB}$  and  $\overline{CD}$ .

Q25. Fill in the blanks with  $>$ ,  $<$  or  $=$  sign

(a)  $64 + (-12)$  \_\_\_\_\_  $(-68) + (-8)$

(b)  $(-20) - (-42)$  \_\_\_\_\_  $(42) - (-20)$

Q26. In a class A of 40 students, 20 students passed in first class. In another class B of 48 students, 16 students passed in first class. In which class was a greater fraction of students getting first class?

Q27. The lawn in front of Molly's house is  $12\text{m} \times 8\text{m}$ , whereas the lawn in front of Dolly's house is  $15\text{m} \times 5\text{m}$ . A bamboo fencing is built around both the lawns. Whose lawn require more fencing?

Q28. The number of students studying in each of the four classes of a secondary school are given below :

Class	VI	VII	VIII	IX
Number of students	50	40	60	80

Draw a pictograph to represent the given data. Take  $1 \text{ } \odot = 10$  students.

Q29. Pick out the solution from the values given in the bracket next to the given equation. Also show that the other values do not satisfy the equation.

$p + 9 = 7$  (2, 4, -2, -4)

Q30. Construct an angle of  $45^\circ$  with ruler and compasses. Also write steps of construction.

Q31. (a) What is the cost of white washing a rectangular wall of length 200cm and breadth 100cm at the rate of ₹ 5 per hundred sq. cm?

(b) The perimeter of a regular hexagon is 60cm. How long is its each side?

Q32. (a) The given table shows the favourite outdoor games of some students of a school.

Outdoor games	Badminton	Football	Cricket	Kho-Kho
Number of students	350	250	500	400

General Draw a bar graph to represent the above information choosing the scale of your choice.

(b) Give one benefit of playing outdoor games.

Q33. In a school, out of 1220 students, 300 are girls. Find the ratio of :

(a) Number of girls to the total number of students.

(b) Number of boys to the number of girls.

(c) Number of boys to the total number of students.

Q34. (a) Rohan was given  $1\frac{1}{2}$  piece of pizza and Mohan

was given  $1\frac{1}{3}$  piece of pizza. Find the total amount of pizza given to both of them.

(b) Simplify :  $9\frac{1}{4} - 3\frac{5}{6}$

समय: - होरात्रयम्

पूर्णाङ्कः - 80

निर्देशाः (i) अस्मिन् प्रश्नपत्रे चत्वारः खण्डाः सन्ति।

(ii) प्रतिखण्ड - उत्तराणि पृथक् प्रदत्तायाम् उत्तरपुस्तिकायां लेखनीयानि।

(iii) प्रत्येकं खण्डं अधिकृत्य उत्तराणि एकस्मिन् स्थाने क्रमेण लेखनीयानि।

(iv) प्रश्नपत्रे उत्तराणि न लेखनीयानि।

(v) प्रश्नसंख्या प्रश्नपत्रानुसारं अवश्यमेव लेखनीया।

(vi) सर्वेषां प्रश्नानां उत्तराणि संस्कृतेन लेखनीयानि।

खण्डः 'क' (अपठित-अवबोधनम्)

अङ्काः 10

प्र1. अधोलिखितम् अनुच्छेदं पठित्वा प्रदत्तप्रश्नानां उत्तराणि लिखत -

काश्मीरप्रदेशम् भारतवर्षस्य गौरवम् अस्ति। अस्य उत्तरपूर्वभागे 'लद्दाख' अस्ति। एषः देशस्य सीमाप्रदेशः। भारतीयसैनिकाः अत्र सीमां रक्षन्ति। हिमालयः अपि सैनिकः इव अस्य रक्षां करोति। काश्मीरस्य रमणीयं सौन्दर्यं मनः हरति। अत्र मधुरं जलं, स्वादूनि फलानि, नानावर्णानि पुष्पाणि, सुन्दराणि उद्यानानि सन्ति। उद्यानेषु 'शालीमार-निशात' इति द्वे उद्याने प्रसिद्धे स्तः। काश्मीरप्रदेशे 'जम्मू' प्राचीनं नगरं अस्ति। एषः काश्मीरस्य राजधानी अस्ति। श्रीनगरम् तु ग्रीष्मकालीना राजधानी। इदं नगरम् 'वितस्ता' नद्याः तटे शोभते। 'डललोक' इति विशालः तडागः अस्ति। अत्र जनाः नौकया जलविहारं कुर्वन्ति प्रसन्नाः च भवन्ति। अत्र अनेकानि तीर्थस्थानानि सन्ति। 'अमरनाथमन्दिरम्' तु संसारे प्रसिद्धम्। काश्मीरस्य जनाः गौरवर्णाः सुन्दराः च भवन्ति। भारते सर्वाधिकं 'केसरम्' अत्र एव भवति।

I. एकपदेन उत्तरत -

(4x½=2)

- नौकया जनाः किं कुर्वन्ति?
- के सीमां रक्षन्ति?
- अत्र किं सर्वाधिकम् भवति?
- काश्मीरप्रदेशम् कस्य गौरवम् अस्ति?

II. पूर्णवाक्येन उत्तरत -

(2x2=4)

- उद्यानेषु के द्वे उद्याने प्रसिद्धे स्तः?
- काश्मीरस्य किम् मनः हरति?

III. यथानिर्देशम् उत्तरत -

(4x½=2)

- 'मधुरं जलं' अनयोः पदयोः विशेषणपदं किम् अस्ति?
- 'कुर्वन्ति' क्रियापदस्य कर्तृपदं किम् अस्ति?
- 'नवीनम्' अस्य किं विलोमपदम् अत्र प्रयुक्तम्?

(iv) 'सरोवरः' अस्य किं पर्यायपदम् अत्र प्रयुक्तम्?  
IV. अस्य गद्यांशस्य कृते समुचितं शीर्षकं लिखत।

(2)

अङ्कः 15

खण्डः 'ख' (रचनात्मकं कार्यं)

प्र2. मित्रम् प्रति लिखितं पत्रं मञ्जूषायां प्रदत्तैः पदैः पूरयित्वा उत्तरपुस्तिकायां पुनः लिखत - (10x½=5)

मञ्जूषा  
उत्तरम्, मिलित्वा, अशोकविहारात्, करोमि, विनीतः, नमस्ते, चरणयोः, तत्रास्तु, गृहम्, समाचारः

(1)

दिनाङ्कः

प्रिय मित्र संजय!

सस्नेहं (2)

अत्र कुशलं (3)

। अधुना (4)

अयं यत् अस्मिन् ग्रीष्मावकाशे भवान्

अवश्यम् एव (5)

आगच्छतु। वयं (6)

अवकाशं यापयिष्यामः। अहम् आशां

(7)

यत् भवान् मम प्रार्थनां स्वीकृत्य शीघ्रम् एव (8)

दास्यति। गृहे मातृ-पितृ-

(9)

मम प्रणामाः कथनीयाः।

भवतां मित्रम्

(10)

प्र3. निम्नचित्रं दृष्ट्वा मञ्जूषायां प्रदत्तशब्दानां सहायतया पञ्चसंस्कृतवाक्यानि लिखत -

(5x2=10)

मञ्जूषा  
वृक्षाः, उद्यानस्य, खगाः, अधः, कन्दुकेन, शुकः, तडागो, वृक्षस्य, वृद्धः, क्रीडति,  
अनेके बालकाः, काकः आम्रफलम्, कमलानि, खेलन्ति



(A-2)

प्र4. निदेशम् उत्तरत -

(i) करणकारके \_\_\_\_\_ विभक्तिः भवति।

(ii) सम्बन्धकारकस्य चिह्नं \_\_\_\_\_ अस्ति।

प्र5. मञ्जूषातः उचित-अव्ययपदं चित्वा रिक्तस्थानं पूरयत -

मञ्जूषा  
उच्चैः, पुरा, अद्य, कदा

(i) त्वं \_\_\_\_\_ विद्यालयं गमिष्यसि?

(ii) \_\_\_\_\_ सोमवासरः अस्ति।

(iii) मेघाः \_\_\_\_\_ गर्जन्ति।

(iv) \_\_\_\_\_ एकः नृपः आसीत्।

प्र6. (क) अधोलिखितवाक्येषु अंकानां स्थाने संख्यावाचकविशेषणे: रिक्तस्थानानि पूरयित्वा पुनः लिखत -

(i) (3) \_\_\_\_\_ फलानि पतन्ति।

(ii) उद्याने (15) \_\_\_\_\_ बालकाः धावन्ति।

(iii) मञ्जे (8) \_\_\_\_\_ पुस्तकानि सन्ति।

(ख) कोष्ठक-प्रदत्त-क्रमवाचक-संख्यापदे उचितविभक्तिं प्रयुज्य रिक्तस्थानं पूरयित्वा वाक्यं पुनः लिखत -

(i) पञ्चमौ \_\_\_\_\_ बालकः वदति। (पञ्चम)

(ii) \_\_\_\_\_ पाठे श्लोकाः सन्ति। (सप्तम)

प्र7. उचितशब्दरूपैः रिक्तस्थानानि पूरयित्वा वाक्यं पुनः लिखत -

(i) हे \_\_\_\_\_ ! वयं नमामः। (पुनि)

(ii) \_\_\_\_\_ समीपे धनं न अस्ति। (साधु-षष्ठी विभक्तिः, एकवचनम्)

(iii) \_\_\_\_\_ पुस्तकं पठामि। (अस्मद्)

(iv) बालकः \_\_\_\_\_ सह गमिष्यति? (किम् - पुल्लिङ्ग, तृतीया विभक्तिः, एकवचनम्)

प्र8. उचितधातुरूपैः रिक्तस्थानानि पूरयित्वा वाक्यं पुनः लिखत -

(i) भक्ताः ईश्वरं \_\_\_\_\_। (नम्)

(ii) त्वं लेखं \_\_\_\_\_। (लिख्)

(iii) श्वः आवाम् चित्राणि \_\_\_\_\_। (दृश्)

(iv) कन्या भयनति \_\_\_\_\_। (पत्)

प्र9. निम्नवाक्यानि शुद्धं कृत्वा पुनः लिखत -

(i) युवाम् कुत्र गच्छन्ति?

(ii) श्वेतम् अश्वः धायति ।

(iii) सा बालिका चतुरः अस्ति ।

प्र10. अधोलिखित-वाक्यानां संस्कृतभाषायाम् अनुवादं कुरुत - (3x1=3)

(i) वे सब पुस्तकें पढ़ते हैं ।

(ii) बालक फल खाता है ।

(iii) रमा पत्र लिखेगी ।

खण्ड: 'घ' (पठित-अवबोधनम्)

अङ्काः 30

प्र11. अधोलिखितं गद्यांशं पठित्वा प्रदत्तप्रश्नानां उत्तराणि लिखत - (5)

एकस्मिन् वृक्षे शृगालः बकः च निवसतः स्म । तयोः मित्रता आसीत् । एकदा प्रातः शृगालः बकम् अवदत् - "मित्र! श्वः त्वं मया सह भोजनं कुरु ।" शृगालस्य निमन्त्रेण बकः प्रसन्नः अभवत् । अग्रिमे दिने सः भोजनाय शृगालस्य निवासं अगच्छत् । कुटिलस्वभावः शृगालः स्थाल्यां बकाय क्षीरोदनम् अयच्छत् । बकम् अवदत् च - "मित्र! अस्मिन् पात्रे आवाम् अधुना सहैव खादावः ।"

I. एकपदेन उत्तरत - (2x½=1)

(i) शृगालस्य निमन्त्रेण कः प्रसन्नः अभवत्?

(ii) शृगालः स्थाल्यां बकाय किम् अयच्छत्?

II. पूर्णवाक्येन उत्तरत - (2x1=2)

(i) एकदा प्रातः शृगालः बकम् किम् अवदत्?

(ii) वने कौ निवसतः स्म?

III. निर्देशानुसारम् उत्तरत - (4x½=2)

(i) 'गृहम्' अस्य किं पर्यायपदम् अत्र प्रयुक्तम्?

(ii) 'खादावः' इति क्रियापदस्य कर्तृपदम् किम् अस्ति?

(iii) 'शत्रुता' अस्य किं विलोमपदं अत्र प्रयुक्तम्?

(iv) 'अस्मिन् पात्रे' अनयोः पदयोः विशेष्यपदं किम् अस्ति?

प्र12. अधोलिखितं पद्यांशं पठित्वा प्रदत्तप्रश्नानाम् उत्तराणि लिखत - (5)

सूर्यस्तपतु मेघाः वा वर्षन्तु विपुलं जलम् ।

कृषिका कृषिको नित्यं शीतकालेऽपि कर्मठी ॥

I. एकपदेन उत्तरत - (2x1=2)

(i) मेघाः किम् वर्षन्तु?

(ii) कः तपतु?

II. पूर्णवाक्येन उत्तरत - (1x2=2)

नित्यं शीतकालेऽपि कौ कर्मठी?



III. यथानिर्देशम् उत्तरत -

(2x½=1)

(i) 'विपुलं जलं' अनयोः पदयोः विशेषणपदं किम्?

(ii) 'क्रियाशीलौ' अस्य किं पर्यायपदम् अत्र प्रयुक्तम्?

प्र13. अधोलिखितं नाट्यांशं पठित्वा प्रदत्तप्रश्नानाम् उत्तराणि लिखत -

(5)

(ततः प्रविशन्ति नागरिकः श्यालः बद्धं पुरुषं आदाय रक्षकीं च)

रक्षकी - (ताडनस्य अभिनयं कृत्वा) अरे कुम्भीलक! कथय, कुत्र त्वया एतत् राजकीयम् अंगुलीयकं प्राप्तं? एतस्मिन् तु राज्ञः नाम उत्कीर्णम् विद्यते।

बद्धपुरुषः - (भयस्य अभिनयं कृत्वा) भवन्तः प्रसीदन्तु। अहं न ईदृशः कर्मकरः।

जानुकः - किम् शोभनः ब्राह्मणः इति मत्वा राजा तुभ्यं दानं दत्तवान्?

बद्धपुरुषः - शृणुत इदानीम्। अहं शक्रावतारस्य तीर्थस्य निवासी धीवरः अस्मि।

सूचकः - धूर्त! किम्! अस्माभिः तव जातिः पृष्टा?

श्यालः - सूचकः सर्वं क्रमेण कथयतु। एवं मध्ये मा निवारय।

I. एकपदेन उत्तरत -

(2x½=1)

(i) शक्रावतारस्य तीर्थस्य निवासी कः आसीत्?

(ii) एतस्मिन् कस्य नाम उत्कीर्णम् विद्यते?

II. पूर्णवाक्येन उत्तरत -

(2x1=2)

(i) श्यालः किम् कथयति?

(ii) सूचकः किम् पृच्छति?

III. यथानिर्देशम् उत्तरत -

(4x½=2)

(i) 'मम' अस्य किम् विलोमपदम् अत्र प्रयुक्तम्?

(ii) 'शोभनः ब्राह्मणः' अनयोः पदयोः विशेषणपदं किम् अस्ति?

(iii) 'सूचकः' अस्य किम् पर्यायपदम् अत्र प्रयुक्तम्?

(iv) 'अहम् धीवरः अस्मि' अत्र 'अस्मि' क्रियापदस्य कर्तृपदं किम् अस्ति?

प्र14. अधोलिखित-श्लोकस्य अन्वयम् उचितक्रमेण पूरयित्वा उत्तरपुस्तिकायाम् पुनः लिखत -

(4x1=4)

त्वरितमेहि मां श्रावय गीतिम्

प्रिय मातुल! वर्धय मे प्रीतिम्

किन्नायास्यसि मातुलचन्द्र?

कुत आगच्छसि मातुलचन्द्र?

अन्वयः - प्रिय मातुल! त्वरितम् एहि मां (i) \_\_\_\_\_ श्रावय। मे (ii) \_\_\_\_\_ वर्धय।

(iii) \_\_\_\_\_। किम् न आयास्यसि? मातुलचन्द्र! कुतः (iv) \_\_\_\_\_?

प्र15. अधोलिखितवाक्येषु रेखांकितपदानि आधृत्य प्रश्ननिर्माणं कुरुत -

(4x1=4)

(i) अस्य शरीरस्य मांसस्य गन्धः निःसरति ।

(ii) तौ हलेन कर्षतः ।

(iii) पथिकः तान् अगणयत् ।

(iv) वृद्धा विचारयति ।

प्र16. अधोलिखितवाक्यानि घटनाक्रमानुसारेण पुनः लिखत -

(8x½=4)

(i) स्वामी अत्युच्चैः चीत्करोति ।

(ii) स्वामी एकं लघुपात्रम् उद्घाटयति ।

(iii) अजीजः वस्तुद्वयं आनेतुं इत्तस्ततः भ्रमति ।

(iv) अजीजः सरलः परिश्रमी च आसीत् ।

(v) मधुमक्षिके स्वामिनं दशतः ।

(vi) वृद्धा अजीजाय वस्तुद्वयं ददाति ।

(vii) स्वामी अजीजाय वेतनस्य पूर्णं धनं ददाति ।

(viii) सः गृहं गन्तुम् अवकाशम् इच्छति ।

प्र17. अर्थैः सह शब्दानाम् मेलनं कृत्वा पुनः उत्तरपुस्तिकायाम् लिखत -

(6x½=3)

शब्दाः अर्थाः

अपरः श्वेतवस्त्रम्

धनम् परिवारस्य

लीनः अन्यः

सितपरिधानम् द्रविणम्

कुटुम्बस्य आवासम्

गेहम् संलग्नः