



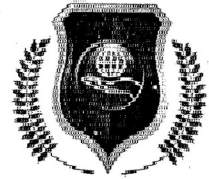


CLASS – VIII	Computer Science	Half Yearly Examination	27-Sept-2017
---------------------	-------------------------	--------------------------------	---------------------

Name:	MM : 80	Time : 3 Hr
--------------	----------------	--------------------

Q1. Choose the correct answer and write it in the answer sheet: [10X1=10]

- (a) Cable television in a city is an example of
- | | |
|-----------|----------|
| (i) PAN | (ii) WAN |
| (iii) LAN | (iv) MAN |
- (b) Extension of audio file
- | | |
|------------|-----------|
| (i) .html | (ii) .mp3 |
| (iii) .doc | (iv) .ppt |
- (c) It converts digital signals to analog signals
- | | |
|---------------|------------|
| (i) Connector | (ii) Modem |
| (iii) Switch | (iv) Cable |
- (d) This is the simplest form of topology where two nodes are directly connected to each other
- | | |
|------------|---------------------|
| (i) Bus | (ii) Star |
| (iii) Mesh | (iv) Point to Point |
- (e) Tag used to mark the text as hyperlink
- | | |
|-----------|-------------|
| (i) <H> | (ii) <link> |
| (iii) <A> | (iv) <P> |
- (f) Dotted and dashed are some of the possible values for the CSS property
- | | |
|--------------|-------------------|
| (i) Font | (ii) border-style |
| (iii) height | (iv) border-width |
- (g) It refers to computer network restricted to an organisation
- | | |
|----------------|---------------|
| (i) PAN | (ii) WAN |
| (iii) Intranet | (iv) Internet |
- (h) Property used to align an image to right or left of the text in a webpage
- | | |
|------------|------------|
| (i) Left | (ii) Right |
| (iii) Both | (iv) Float |
- (i) Default bullet style in an unordered list
- | | |
|---|--|
| (i)  | (ii)  |
| (iii)  | (iv)  |



- (j) Attribute not supported by the <table> tag
- | | |
|------------|-------------------|
| (i) border | (ii) height |
| (iii) face | (iv) cell padding |

Q2. Give one word answer for the following:

[10X1=10]

- This network connects two or more computers located at far-away places across countries
- Number of heading levels supported by HTML
- These are computers with request services from the server
- Give an example of an empty tag
- In this topology data is transmitted in one direction only
- Default number style in an ordered list
- Write the full form of WiFi
- These are used in wireless networks instead of hubs/switches
- Tag which encloses the <TD> tag while making tables in HTML
- This attribute of <video> tag plays the video file automatically when webpage is loaded

Q3. Answer the following questions

[5X3=15]

- What are "tables"? Write it's advantages.
- What are frames in HTML? Briefly explain the tag used to define frames and any of its two attributes.
- Write the importance of associating alternate text with an image in a web page.
- Explain the feature of linking in HTML along with its types.
- How can we insert video clips in HTML? Explain any of the two attributes associated with this tag.

Q4. Write HTML tags for the following:

[4X2=8]

- To insert a hypertext "Click Here" on a webpage which links to "text.html"
- To insert an image "tulips.jpg" that is right aligned with alternate text as "picture of a beautiful flower"
- To insert a video file "wildlife.mp4" with both the height and width set to 50 px
- To insert a frame "School.html" with height as 300 px and width as 400 px

Q5. Write notes on:

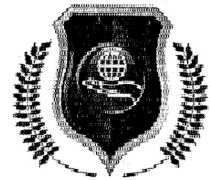
[4X2=8]

- | | |
|---------------------------|-------------------------|
| (a) Network Card | (b) Bluetooth |
| (c) Personal Area Network | (c) Client-Server Model |

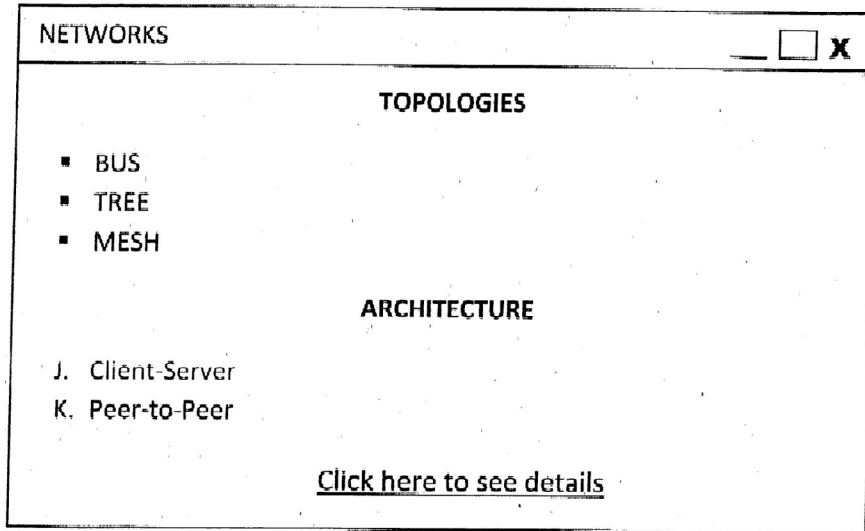
Q6. Explain:

[4X3=12]

- | | |
|---|----------------------|
| (a) <audio> tag with any of its two attributes | (b) Network Security |
| (c) tag. Also explain any two of its attributes | (d) Description List |



Q7. Write HTML program to obtain output as shown below:



- (a) Give the title as shown on the web page above [1]
- (b) Set the colour of the full page to yellow [1]
- (c) Set the two headings to level 1, center align [2]
- (d) HTML for the two lists shown [4]
- (e) Last sentence should link to the file "Details.html" [2]

- Q8. (a) Mr. Sharma has set up a new office with few computers having similar capacity in a network. Which type of network architecture is suitable for his office? [1]
- (b) Name the topology used in our school computer lab where each computer is connected separately to a central server [1]
- (c) Mohit wants to list the 4 network types – PAN, LAN, MAN & WAN in a table. Write the HTML code for the following table. Also set the table border to 4 and the cell padding to 20 pixels. [5]

PAN	MAN
LAN	WAN

HALF YEARLY EXAMINATION

10/2017

CLASS : VIII

SUBJECT : MATHEMATICS

Time : 3 hrs

MM : 80

General Instructions :

- (i) *All questions are compulsory.*
- (ii) *Read all questions very carefully.*
- (iii) *Questions 1 to 6 carry 1 mark each.*
- (iv) *Questions 7 to 12 carry 2 marks each.*
- (v) *Questions 13 to 22 carry 3 marks each.*
- (vi) *Questions 23 to 30 carry 4 marks each.*

- Q1. Name any quadrilateral whose diagonals are equal.
- Q2. Write the additive inverse of $\frac{31}{112}$.
- Q3. Is it possible to have a polyhedron with any given number of faces? Name the smallest polyhedron.
- Q4. State whether the population of a country and the area of land occupied per person vary directly or inversely.
- Q5. When a die is thrown, list the outcomes of getting a prime number.
- Q6. Without any calculation find the number of digits in the square root of 25600.
- Q7. Calculate the angle sum of a convex polygon with 8 sides.
- Q8. Represent $-\frac{3}{7}$ and $\frac{2}{7}$ on a number line.
- Q9. Two numbers are in the ratio 7:4. If they differ by 21, what are the numbers?
- Q10. Find the cube root of 74088 by estimation method.
- Q11. A card is drawn at random from a pack of 52 cards. Find the probability that it will be (a) a king (b) a red card.
- Q12. Can a polyhedron have 8 faces, 9 vertices and 11 edges?

Q13. How many sides does a regular polygon has if each of its interior angle is 120° ?

Q14. Write a Pythagorean triplet whose one member is 26.

Q15. Find the cube root of 4096 by prime factorisation method.

Q16. A machine in a soft drink factory fills 950 bottles in 5 hours. How many bottles will it fill in 4 hours?

Q17. Solve by using properties : $\frac{2}{3} \times \frac{7}{6} + \frac{1}{9} + \frac{2}{3} \times \frac{1}{3}$

Q18. Solve : $\frac{3x}{2} - \frac{5x}{4} + \frac{x}{4} = 30$

Q19. (a) Find the square root of 49 by repeated subtraction method.

(b) Express 144 as the sum of 12 odd numbers.

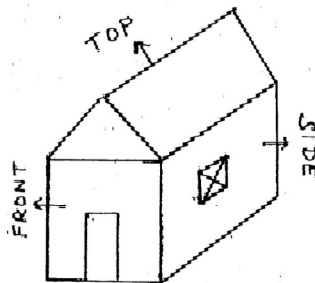
Q20. The given data shows the daily wages (in ₹) of a group of 35 workers in a firm.

Daily wages (in ₹)	100-200	200-300	300-400	400-500	500-600
No. of workers	8	6	2	10	9

Draw a histogram for the given data.

Q21. Deepika is twice as old as Kanchan. Five years later Deepika's age will be 5 more than Kanchan's age. Find their present ages.

Q22. Draw the front view, side view and top view of the given figure.



(2)

Q23. Using Euler's formula, find the values of x , y and z .

Faces	6	19	z
Edges	12	y	30
Vertices	x	19	16

Q24. Five persons could paint the house in 12 days.

- Two persons left the job before the work started. How long would the job take now?
- How many persons would be needed to paint the house in 5 days?

Q25. Solve and check your result : $5x - 4 = 3x - 10$

Q26. Find four rational numbers between $\frac{-5}{6}$ and $\frac{-2}{3}$.

Q27. Find the least number which must be subtracted from 3248 so as to get a perfect square. Also find the square root of the perfect square so obtained.

Q28. (a) Make a pie chart to show the number of votes received in the election of the class monitor.

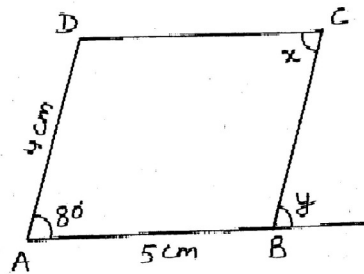
Name	Rajan	Pari	Prashant	Mohan
Votes	15	10	20	15

(b) What is the importance of voting?

Q29. Is 5488 a perfect cube? If not find the smallest number by which 5488 must be divided to obtain a perfect cube.

Q30. ABCD is a parallelogram. If $AB = 5\text{cm}$, $AD = 4\text{cm}$ and $\angle DAB = 80^\circ$. Find the following by giving appropriate reason.

- x and y .
- Length of DC.



(खण्ड - क)

- प्र1. निम्नलिखित गद्यांश को पढ़कर नीचे लिखे प्रश्नों के उत्तर दीजिए :-
- मनुष्य विवेकशील सामाजिक प्राणी है। शिक्षा प्राप्त कर वह अपनी समस्त शक्तियों का सदुपयोग करता है। मनुष्य शिक्षा प्राप्त कर जीवन के प्रत्येक क्षेत्र में दक्षता और सफलता प्राप्त करना चाहता है। शिक्षा रहित जीवन बंजर भूमि के समान है और शिक्षित जीवन एक सुंदर उपवन है, जिसकी आभा सब ओर छा जाती है। शिक्षा का उद्देश्य बालक के व्यक्तित्व का बहुमुखी विकास करना है। शिक्षा मानव को उसके गौरवशाली अतीत से परिचित करवाती है। वह ज्ञान अर्जन कर अपनी रुचियों और रुझानों को विभिन्न आयाम प्रदान कर विभिन्न क्षेत्रों में प्रगति की नवीन शृंखला बन सकता है। शिक्षा बालक में विभिन्न मानवीय गुणों का विकास करती है तथा शिक्षित व्यक्ति अपने अनुशासन, सदाचार, दया, अहिंसा से समाज का उत्थान करता है। शिक्षा मानव को नवीन आलोक प्रदान करती है। शिक्षा को मात्र पुस्तकीय ज्ञान से जोड़ा जाना उचित नहीं है, यह मानव की समस्त शक्तियों का विकास कर उसे बहुमुखी प्रतिभा का स्वामी बनाती है। आदिकाल से आधुनिक मानव के विकास की गाथा में शिक्षा का महत्त्वपूर्ण योगदान है। आत्मिक व बौद्धिक विकास का अचूक मंत्र शिक्षा ही है।
- (क) जीवन के लिए शिक्षा क्यों आवश्यक है? (1)
- (ख) शिक्षित और अशिक्षित व्यक्ति की तुलना किससे की है? (1)
- (ग) 'समाज के उत्थान में शिक्षा का योगदान है' - स्पष्ट कीजिए। (1)
- (घ) 'सदुपयोग' और 'गौरवशील' शब्द से उपसर्ग व प्रत्यय अलग करके लिखिए। (1)
- (ङ) गद्यांश का उचित शीर्षक लिखिए। (1)
- प्र2. निम्नलिखित काव्यांश को पढ़कर दिए गए प्रश्नों के उत्तर दीजिए :-
- खोलकर सीना, बाँधकर मुट्ठी कड़ी
मैं खड़ा ललकारता हूँ।

ओ भाग्य!

तू सुन रहा है?

हाँ, वही मैं

जो कि कल तक कर रहा था चरणों में तेरे बंदना
कल कह रहा था तुम्हीं हो सर्वस्व मेरे।

हाँ, वही मैं

आज उन्नत शीश व क्रोधित आँखें

तुझको दे रहा हूँ ले, चुनौती

क्योंकि मैंने आज यह सत्य जाना

भाग्य भ्रम मात्र है परिश्रम ही कर्म है।

इसलिए तुझे छोड़ मैं बन कर्मठ

पराजय को बदल जीत में

ओ नियति!

हाथ की रेखाएँ स्वयं बदलकर

कर्म करते मैं बढ़ा

तुझे छोड़ पीछे

मैं प्रगति-पथ पर बढ़ा।

- (क) कवि किसे चुनौती दे रहा है? (1)
- (ख) कल तक कवि किस पर निर्भर होकर क्या करता था? (1)
- (ग) कवि बाद में किस सत्य से परिचित हुआ? (1)
- (घ) इस काव्यांश से क्या शिक्षा मिलती है? (1)
- (ङ) प्रश्न अलंकार और अनुप्रास अलंकार का एक-एक उदाहरण लिखिए। (1)

(खण्ड - ख)

प्र३. निर्देशानुसार उत्तर दीजिए :-

- (क) किसी भी एक संयुक्ताक्षर से दो शब्द बनाइए। (1)
- (ख) भाववाचक संज्ञा बनाइए :- कठिन, निकट (1)
- (ग) दो उभयलिंगी शब्द लिखिए। (1)
- (घ) निम्नलिखित शब्दों के वचन बताइए :- चाँदी, आँसू (1)
- (ङ) कारक चिह्न रेखांकित करके भेद बताइए :- (2)
- (i) अर्जुन पांडवों में श्रेष्ठ थे।
- (ii) राकेश साइकिल से गिर गया।

(2)

- प्र4. (क) उचित सर्वनाम से रिक्त स्थानों की पूर्ति कीजिए :- (2)
- (i) _____ अपना काम _____ करना चाहिए।
(ii) _____ जैसा करेगा _____ बैसा भरेगा।
- (ख) दिए गए वाक्यों में विशेषण छोटकर भेद बताइए :- (2)
- (i) पिताजी तीन पुस्तकें लाए।
(ii) मेरा मित्र कल मुंबई चला जाएगा।
- (ग) 'विजयी' शब्द में उपसर्ग व प्रत्यय अलग करके लिखिए। (1)
- प्र5. (क) 'इच्छा' शब्द के दो पर्यायवाची शब्द लिखिए। (1)
(ख) 'अंत' और 'उत्थान' शब्द के विपरीत शब्द लिखिए। (1)
(ग) 'कर' शब्द के दो भिन्न अर्थ लिखिए। (1)
(घ) 'अपने पैरों पर खड़े होना' मुहावरे का वाक्य में प्रयोग कीजिए। (1)

(खण्ड - ग)

- प्र6. निम्नलिखित काव्यांश को पढ़कर नीचे दिए गए प्रश्नों के उत्तर लिखिए :
ऐसे बेहाल बिवाइन सों, पग कटक जाल लगे पुनि जोए।
हाथ! महादुख पायो सखा, तुम आए इतै न कितै दिन खोए।
देखि सुदामा की दीन दसा, करुना करिकै करुनानिधि रोए।
पानी परात को हाथ छुये नहिं, नैनन के जल सों पग धोए।
- (क) सुदामा के पैरों की दुर्दशा का वर्णन कीजिए। (2)
(ख) 'पानी परात को हाथ छुयो नहिं, नैनन के जल सों पग धोए।' पंक्ति का आशय स्पष्ट कीजिए। (2)
(ग) 'करुनानिधि' शब्द का प्रयोग किसके लिए किया गया है और क्यों? (1)
- प्र7. (क) 'दीवानों की हस्ती' कविता में कवि ने दुनिया के लोगों को भिखमंगा क्यों कहा है? (2)
(ख) कबीरदास घास का उदाहरण देकर मनुष्य को क्या शिक्षा देना चाहते हैं? (2)
(ग) 'दीवानों की हस्ती' कविता की भाषागत विशेषताएँ लिखिए। (2)
- प्र8. निम्नलिखित गद्यांश को पढ़कर नीचे लिखे प्रश्नों के उत्तर दीजिए :
ठगा भी गया हूँ, धोखा भी खाया है, परंतु बहुत कम स्थलों पर विश्वासघात नाम की चीज मिलती है। केवल जन्ही बातों का हिसाब रखो, जिनमें धोखा खाया है

तो जीवन कष्टकर हो जाएगा, परंतु ऐसी घटनाएँ भी बहुत कम नहीं हैं जब लोगों ने अकारण सहायता की है, निराश मन को ढाँढ़स दिया है और अंत बँधाई है। कविवर रवींद्रनाथ ठाकुर ने अपने प्रार्थना गीत में भगवान से प्रार्थना की थी कि संसार में केवल नुकसान ही उठाना पड़े, धोखा ही खाना पड़े तो ऐसे अवसरों पर भी हे प्रभो! मुझे ऐसी शक्ति दो कि मैं तुम्हारे ऊपर सदेह न करूँ।

(क) लेखक ने ठगी और धोखे की घटनाओं का हिसाब न रखने की बात क्यों कही है? (2)

(ख) कविवर रवींद्रनाथ ईश्वर से क्या प्रार्थना करते हैं? (1)

प्र9. निम्नलिखित प्रश्नों के उत्तर विस्तार से दीजिए : (3x3=9)

(क) लेखक लम्बी अवधि के बाद जब अपने गाँव गए तो उन्हें बदलू की याद कब आई?

(ख) कानून व धर्म को लेकर लोगों की सोच में क्या अंतर आ गया? 'क्या निराश हुआ जाए' पाठ के आधार पर लिखिए।

(ग) 'लाख की चूड़ियाँ' पाठ के आधार पर बदलू की चरित्रगत विशेषताएँ लिखिए।

प्र10. (क) निम्नलिखित शब्दों के अर्थ लिखिए :- (2)

पैतृक, उजानर, कंबल, कंबल

(ख) निम्नलिखित शब्दों का अर्थ लिखिए :- (2)

प्रचार, ईमानदार

प्र11. हमारे मनीषियों ने किस तरह के भारत के सपने देखे थे? भावी नागरिक होने के नाते आप कैसे भारत की कल्पना करते हैं? अपने विचार लिखिए। (3)

अथवा

कबीरदास ने अपनी साखी में एकाग्रता का महत्व बताया है। जीवन में एकाग्रता क्यों आवश्यक है? अपने अनुभव के आधार पर लिखिए।

प्र12. निम्नलिखित प्रश्नों के उत्तर उपन्यास 'गजमुक्ता की तलाश' के आधार पर लिखिए :-

(क) वसंत दा के लखनऊ जाने की खबर सुनकर अबिका के होश क्यों उड़ गए? (2)

(ख) दीवान जी ने अबिका को क्या जिम्मेदारी सौंपी थी और क्यों? आप भी घर और विद्यालय की किन-किन जिम्मेदारियों को किस प्रकार पूरा करते हैं? (3)

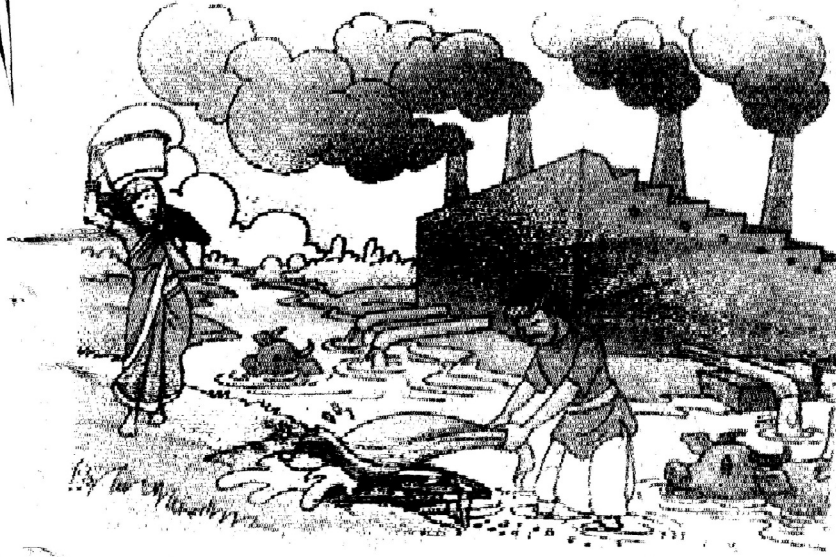
अथवा

(4)

विद्यु के पिताजी के घायल होने पर घर के सभी सदस्य उनकी देखभाल में जुट गए थे? आप अपने घर में किसी के बीमार होने पर उनकी सहायता किस प्रकार करते हैं?

(खण्ड - घ)

- प्र13. सैनिकों के समर्पण और त्याग भाव पर चर्चा करते हुए अध्यापिका और कक्षा के विद्यार्थियों के बीच हुई बातचीत को संवाद के रूप में लिखिए। (4)
- प्र14. 'ओट्स' बिरुकिट के लिए सुंदर एवं आकर्षक विज्ञापन तैयार कीजिए। (3)
- प्र15. नीचे दिए चित्र को देखकर 25-30 शब्दों में एक अनुच्छेद लिखिए। (3)



- प्र16. अपने क्षेत्र के थानाध्यक्ष को साइकिल चोरी हो जाने की शिकायत करते हुए पत्र लिखिए। (5)

अथवा

- फिजूलखर्ची करने वाले मित्र को बचत करने की सलाह देते हुए पत्र लिखिए।
- प्र17. निम्नलिखित विषयों में से किसी एक विषय पर 250 शब्दों में निबंध लिखिए: (5)

- (क) अनेकता में एकता, हिंद की विशेषता
- (ख) मनुष्य वही जो मनुष्य के लिए मरे
- (ग) घटते पेड़, बढ़ता तापमान

(5)

HALF YEARLY EXAMINATION

10/2017

CLASS : VIII

SUBJECT : INTEGRATED SCIENCE

Time : 3 hours

MM : 80

General Instructions :

- (i) This paper consists of three sections A, B and C.
- (ii) Marks are indicated against each question.
- (iii) Draw neat and well labelled diagrams wherever required.

SECTION-A (PHYSICS)

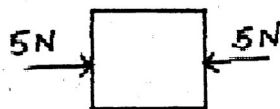
Q1. Answer in one word or one sentence : (5x1=5)

- (a) What happens, when a charged plastic straw is brought near an uncharged one?
- (b) 'X' is acting on our bodies from outside and our blood pressure is balancing it from inside. Identify 'X'.
- (c) An earthquake can cause a huge damage to life and property. Name the device that is used to record the waves of an earthquake.
- (d) Why is it advised not to put any sharp or pointed object in our ears?
- (e) There is a force that always acts in the direction opposite to that of motion. Name that force.

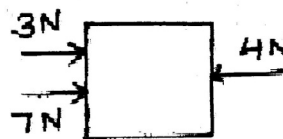
Q2. Answer briefly : (4x2=8)

- (a) Two situations are given below. For each situation, determine the net force acting upon the object.

SITUATION A



SITUATION B



(1)

(b) In an electroscope, when a charged refill is brought near the metallic clip, the charge transfers and the aluminium strips show deflection. What change do you observe in the strips when you touch the metal clip with your hand? Why does this happen?

(c) Give reason :

(i) It is difficult to walk on a wet surface.

(ii) Wrestlers apply sand on their hands.

(d) Your parents are going to buy a house. They have been offered one on the roadside and another three lanes away from the roadside. Which house would you suggest your parents should buy? Explain your answer.

Q3. Answer the following : (3x3=9)

(a) (i) What is easier - to move a heavy box at rest or to move it when it is already in motion? Justify your answer.

(ii) If we put wheels under the heavy box, which type of friction will act between the wheels and the ground?

(b) Explain with the help of a diagram, an activity that liquids exert pressure on the walls of the container.

(c) Suppose you are at home and when you look out of the window, you see bright streaks of light in the sky due to heavy rainfall.

(i) Name the device that must be installed in your building to keep it lightning safe.

(ii) Enlist two precautions that you must take at this time.

Q4. Answer the following : (1x5=5)

(a) A pendulum oscillates 20 times in 5 seconds. Calculate its time period and frequency.

- (b) Out of a whistle and a drum, whose sound is shriller? Why?

SECTION-B (CHEMISTRY)

Q1. Answer in one word or one sentence : (5x1=5)

- (a) Select the odd one out giving reason :
biogas, natural gas, coal, petroléum
- (b) How does hot water released from coal power plants and industries act as a pollutant?
- (c) Petrol : aviation fuel :: _____ : candles
- (d) Name the non-metal essential for our life and is inhaled by all living beings during breathing.
- (e) Which one of the following element doesn't react with dilute hydrochloric acid. Give reason.
magnesium, iron, aluminium, sulphur

Q2. Answer briefly : (4x2=8)

- (a) Which fuel is the government insisting on to be used in vehicles? How will it be helpful in reducing air pollution?
- (b) What is the use of the following properties of metals?
(i) malleability (ii) ductility
(iii) sonority (iv) heat conduction
- (c) Fill in the blanks to complete the following paragraph:
The name of the product formed in the reaction between sulphur and (i)_____ is sulphur dioxide gas. When sulphur dioxide is dissolved in (ii)_____, sulphurous acid is formed. Sulphurous acid turns blue litmus red. Generally oxides of (iii)_____ are acidic in nature and oxides of (iv)_____ are basic in nature.

(d) What is potable water? Write any two methods of water purification.

Q3. Answer the following :

(3x3=9)

(a) When coal is produced in industry three useful products are obtained - one is a solid, other is a liquid and the third is a gas. Name the three products and give one use of each.

(b) Complete the following table :

	Pollutant	Source of the Pollutant	Effect
(i)	_____	produced by incomplete combustion of fuels like diesel and petrol	_____
(ii)	Chlorofluoro carbons	_____	_____
(iii)	_____	_____	cause smog that causes breathing difficulties like asthma, coughing etc.

(c) Imagine that you are an iron-strip. Keeping this in mind answer the following questions :

(i) Classify yourself as metal or non-metal.

(ii) What will happen when you stay in moist air for considerable time? Write the word equation for the above change.

Q4. Answer the following : (5)

(a) What is a displacement reaction? Which of the following pair will show displacement reaction and why?

(i) Copper sulphate (CuSO_4) + Zinc (Zn)

(ii) Iron sulphate (FeSO_4) + Copper (Cu)

(b) Sodium is stored in kerosene while phosphorus is stored in water. Justify.

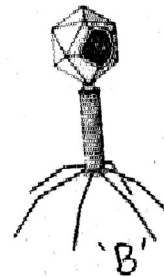
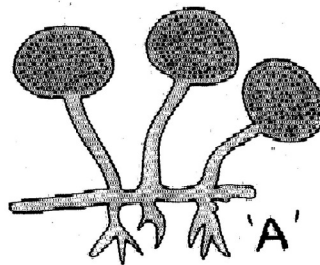
SECTION-C (BIOLOGY)

Q1. Answer in one word or one sentence : (4x1=4)

(a) Sonali accidentally placed her hand over a flame and immediately pulled it back. She felt the sensation of heat and reacted. Name the cell of the human body responsible for the sensation.

(b) What is the Red Data Book?

(c) Identify the microbes shown in the diagrams given below :



(d) Name any two communicable diseases for which you have been vaccinated.

Q2. Answer briefly :

(4x2=8)

(a) Which of the following pair of organisms are prokaryotes :

(5)

- A. bacteria and blue-green algae
- B. amoeba and paramecium
- C. humans and neem tree.

Differentiate between prokaryotes and eukaryotes.

(b) Name the method used to preserve the following food items :

- (i) pickle
- (ii) milk
- (iii) fish and meat
- (iv) jellies

(c) Bacterium 'X' lives in the root nodules of leguminous plants and helps in the fixation of nitrogen.

- (i) Define nitrogen fixation.
- (ii) Identify bacterium X.
- (iii) What type of relationship exists between the bacterium and leguminous plants?

(d) Sumit has learnt that tiger is an endangered animal. He has read extensively on this topic. With the help of his teachers and friends, he starts 'Save the Tiger' campaign in school.

- (i) State the values you have learnt from Sumit.
- (ii) Give any two examples of endangered animals found in India other than the Bengal Tiger.

Q3. Answer the following :

(3x3=9)

(a) Sangeeta's family had gone for a visit to the Pachmarhi Biosphere Reserve where they saw many animals and plants of that area. She asked the guide about the species found there and was surprised to know that some species are restricted to the biosphere reserve only and not found naturally anywhere else.

- (i) What is the term given to such species?
 - (ii) What is a biosphere reserve?
 - (iii) Why is the biodiversity of the Pachmarhi Biosphere Reserve said to be unique?
- (b) Explain the role of Yeast in the baking industry and in the commercial production of alcohol and wine.
- (c) Complete the given table :

	Disease	Causative organism	Mode of Transmission
(i)	Tuberculosis	_____	_____
(ii)	_____	protozoa	mosquito bite
(iii)	Rust of wheat	_____	air, seeds
(iv)	Typhoid	_____	_____

Q4. Answer the following :

(5)

Bhumi and Falak were observing two slides given by their teacher. The slide Bhumi observed had cells having a cell wall and a large vacuole and the slide Falak observed had cells having no cell wall and chloroplasts.

- (a) Whose slide represented plant cells - Bhumi or Falak?
- (b) Mention the structures which are common to both plant and animal cell.
- (c) Why are stains used to prepare a slide before observing it under a microscope?
- (d) Draw a neat and well labelled diagram of an animal cell.

(7)

Time : 3 hrs

MM : 80

General Instructions :

- (i) *Read the questions carefully.*
- (ii) *Number the answers as given in the question paper.*
- (iii) *Write in a neat and clear handwriting.*
- (iv) *Write the answers in complete sentences.*

SECTION-A (READING)

- Q1. Read the passage given below and answer the questions that follow : (7)

The Jantar Mantar in Jaipur, the capital of Rajasthan, is a UNESCO World Heritage Site. It is actually a collection of architectural astronomical instruments, built by Sawai Jai Singh or Jai Singh II of the Rajpur Kachhwaha dynasty of Amber in the 18th century. Apart from Jaipur, similar structures called the Jantar Mantar were also built in four other cities including Delhi, Ujjain, Varanasi and Mathura.

The Jaipur observatory is the largest and best preserved of these. It has been inscribed on the World Heritage list as "an expression of astronomical skills and cosmological concepts of the court of scholarly prince at the end of the Mughal period". Early restoration work was undertaken under the supervision of Major Arthur Garrett, a keen amateur astronomer, during his appointment as Assistant State Engineer for the Jaipur District. The Jantar Mantar was made by Sawai Jai Singh as he was particularly interested in learning about the sky above his head.

The name is derived from Jantar ('instrument') and Mantar ('calculation'). Therefore, Jantar Mantar means 'calculation instrument'. This observatory has religious significance, since ancient Indian astronomers were also Jyotish masters.

The observatory consists of fourteen major geometric devices for measuring time, predicting eclipses, tracking stars' location as the earth orbits around the sun, ascertaining the declinations of planets and determining the celestial altitudes and related ephemerides. The Samrat Yantra, the largest instrument is 90 feet high, its shadow is used carefully to tell the time of the day. Thoroughly restored in 1901, the Jantar Mantar was declared a national monument in 1948.

The instruments are in most cases huge structures. The scale to which they have been built has been alleged to increase their accuracy. However, the penumbra of the sun can be as wide as 30 mm, making the 1mm increments of the Samrat

Yantra sundial devoid of any practical significance. Additionally, the masons constructing the instruments had insufficient experience with construction of scale, and subsidence of the foundations has subsequently misaligned them. Samrat Yantra can be used to tell the time to an accuracy of about two seconds Jaipur local time. The Giant Sundial, known as the Samrat Yantra (The Supreme Instrument) is the world's largest sundial, standing 27 metres tall.

The observatory is used by astronomers even today to calculate the auspicious times of weddings. Students of astronomy and vedic astrology are required to take lessons at the observatory and it can be said that the observatory is the single most representative work of Vedic thought that still survives, apart from the scriptures.

(a) Complete the following sentence :

Jantar Mantar is a collection of _____.

(b) How did Jantar Mantar get its name?

(c) Describe the Jaipur observatory.

(d) How do the astronomers use the observatory in the present?

(e) How can the Samrat Yantra be used?

(f) Find the words from the passage that mean the same as the following : (2x1)

(i) lacking professional skills

(ii) importance

Q2. Read the poem given below and answer the questions that follow :

One thing I like less than most things is
Sitting in a dentist chair with my mouth wide open
And that I will never have to do it again
is a hope that I am against hope hopen.

Because some tortures are physical and some are mental,
But the one that is both is dental
It is hard to be self possessed
With your jaw digging into your chest.

So hard to retain your calm
When your fingernails are making serious alterations in
Your life line or love line or some other important
line in your palm.

So hard to give your usual effect of cheery benignity
When you know your position is one
of the two or three in life most lacking in dignity.

And your mouth is like a section of road that is being worked on.
And it is cluttered up with some stone crushers and concrete

(C-2)

mixers and drills and steam rollers
And there isn't a nerve in your head that you
aren't being irked on.

Oh, some people are unfortunate enough to be strung up by thumbs.
And others have things done to their gums,
And your teeth are supposed to be being polished,
And you have reason to believe they are being demolished.

And the circumstance that adds most to your terror
Is that it's all done with a mirror,
Because the dentist may be a bear, or as the
Romans used to say, only they were
referring to a feminine bear when they said
it, an ursa

But all the same how can you be sure
When he takes his crowbar in one hand and
mirror in the other he won't get mixed up,
the way you do when you try to tie
a bow tie with the aid of a mirror
and forget that left is right and
vice versa?

- (a) What is the one thing that the poet likes less than most things? (1)
- (b) When is it hard to be self possessed? (1)
- (c) What does the poet compare the mouth to? (1)
- (d) Complete the given sentence : (1)
According to the poet the circumstance that adds to our terror is _____.
- (e) What confusion is the poet talking about in the last stanza? (1)
- (f) Find the words from the poem which mean the same as the following : (2x½=1)
- (i) the act of making something different
- (ii) torn down

SECTION-B (WRITING)

- Q3. Write an email to your friend inviting her to come over to your house so that both of you can go and see the Diwali Fair together. (4)
- Q4. Draft an attractive and illustrative poster on 'World Water Day' to create awareness about water conservation. (4)

- Q5. You are Shresth Ahuja, a resident of 93-B, Ambedkar Nagar, New Delhi. Write a letter to your younger brother, Nitin stressing on the importance of rising early and punctuality in life.

SECTION-C (GRAMMAR)

- Q6. Complete the sentences by adding the correct question tags : (4x½=2)
- (a) The children were late to school, _____
 - (b) It is not going to be a great function, _____
 - (c) Rahul didn't go to the market, _____
 - (d) You will go to attend the party today, _____
- Q7. Fill in the blanks with suitable collective nouns : (4x½=2)
- (a) A new bridge has come up for the _____ of army truck to pass freely
 - (b) The entire _____ of the ship welcomed the new captain.
 - (c) The children were enjoying the food in the shade of _____ of trees.
 - (d) A new _____ of thieves has come up in the area.
- Q8. Fill in the blanks with suitable abstract nouns : (4x½=2)
- (a) No one can doubt her _____ towards her work. (sincere)
 - (b) The losing team maintained their _____ and walked off quietly. (dignify)
 - (c) Everyone was impressed by her _____ and _____. (simple decent)
- Q9. Fill in the blanks with suitable relative pronouns : (4x½=2)
- (a) The book _____ I read last week is quite interesting.
 - (b) I have a friend _____ uncle works in an Embassy.
 - (c) The woman _____ lives next door sings beautifully.
 - (d) The person _____ you met in Delhi, is the famous writer Ruskin Bond.
- Q10. Fill in the blanks with correct form of verb from the bracket. (4x½=2)
- (a) I _____ (reach) the stop and _____ (see) the bus leaving.
 - (b) I _____ (travel) to Allahabad next week.
 - (c) They _____ (warn) us many times. Let's listen to them.
- Q11. Fill in the blanks with suitable determiners : (4x½=2)
- (a) Only _____ students are sitting in the class.
 - (b) _____ Prime Minister will give a speech this afternoon.

- (c) It is _____ long way to go.
- () Give me _____ sugar as I need to bake a cake.
- Q12. Fill in the blanks with suitable adverbs from the brackets : (4x½=2)
- (a) The boy ran _____ to win the race. (fast/fastly)
- (b) Call the rose by any other name still it smells _____. (sweet/sweetly)
- (c) The museum was _____ decorated with replicas of monuments. (beautiful/beautifully)
- (d) The whole assignment was completed _____. (efficient/efficiently)
- Q13. Rearrange the given words to form meaningful sentences : (3x1=3)
- (a) me/fear/to/nothing/there/was/she/told
- (b) communicate/difficult/to/find/people/some/it/thoughts/their
- (c) thanked/us/the/showing/him/to/the/way/for/post office/the/stranger
- Q14. Rewrite the sentences into passive form : (3x1=3)
- (a) The peon rings the bell.
- (b) Tom painted the entire house.
- (c) The washerman is washing the clothes.

SECTION-D (LITERATURE)

- Q15. Read the extracts given below and answer the questions that follow : (3x1=3)
- (A) "So stately his form, and so lovely her face,
That never a hall such a galliard did grace;
While her mother did fret, and her father did fume,
And the bridegroom stood dangling his bonnet and plume."
- (a) Whom does the word 'her' refer to?
- (b) Which hall is mentioned in the above lines?
- (c) What was the bridegroom's reaction on seeing them dance?
- (B) "When I left our ancestral house twenty-nine years ago, the house was almost two hundred years old." (3x1=3)
- (a) Name the chapter from which the above lines have been taken?
- (b) Who does the word 'I' refer to in the above lines?
- (c) Where was the ancestral house located?
- Q16. Answer any THREE out of FOUR questions in about 30-40 words each : (3x2=6)
- (a) How did the woman in white sari help Arun?

- (b) Mukul Sharma gave a big surprise at the end of the event. How and why did he do so?
- (c) Jimmy tried to resettle himself in Elmore. What did he do to hide his identity?
- (d) How did Aditya get the medal which originally belonged to Sasanka Sanyal?

Q17. Answer any TWO out of THREE questions in about 30-40 words each : (2x2=4)

- (a) Mention the qualities of Lochinvar which helped him win over Ellen.
- (b) Who is the poet of the poem 'Where the Mind is Without Fear' and why does the poet compare the society with the desert?
- (c) Quote the words written on the pedestal of the statue. What does it indicate?

Q18. Answer the following question in 70-80 words : (1x4=4)

The poet P.B. Shelley has brought out a wonderful message through the poem, 'Ozymandias'. Explain the statement.

OR

Mention a few qualities the poet in the poem, 'Where the Mind is Without Fear' wishes his countrymen to have.

Q19. Answer the following question in 80-100 words : (1x5=5)

Why did Arun like the strange woman but disliked Satish's mother? Give suitable reasons.

OR

Imagine you are the narrator's mother. Write a diary entry describing the game of musical chair. Also write about the way Mukul Sharma behaved in the end based on the chapter 'True Spirit of Sport'.

Q20. Answer the following question in 30-40 words : (1x3=3)

Describe Bidy in your own words.

Q21. Answer the following question in 80-100 words : (1x5=5)

Why did Miss Havisham shut herself in her house?

OR

Describe Mr. Jaggers' office briefly. What arrangements had he made for Pip?

Time : 3 hrs

MM : 80

General Instructions :

- (i) **Read all the questions carefully.**
- (ii) **Write in a neat and clear handwriting.**
- (iii) **Write the answers in complete sentences.**
- (iv) **Number the answers as given in the question paper.**

SECTION-A [COMPRÉHENSION ÉCRITE]

A1. Lisez :

Caroline, la sœur de Denis est malade. Denis téléphone à son ami Paul :

Denis : Allô? Paul?

Paul : Allô Denis, ça va?

Denis : Pas très bien. Ma sœur Caroline est malade. Elle a de la fièvre et elle a mal à la tête.

Paul : Oh, il faut amener Caroline chez le docteur. Il y a un très bon docteur près de ma maison.

Denis : D'accord. Je viens tout de suite.

Chez le docteur

Denis : Bonjour docteur. C'est ma sœur Caroline, elle est malade.

Docteur : Quel âge a-t-elle?

Denis : Caroline a dix ans.

Docteur : Je prends sa température ... Ah, elle a une grippe. Il faut donner ces médicaments et du lait chaud. Elle va guérir vite.

Denis : Merci docteur.

A1.1 Répondez :

(2x1=2)

- (a) Qui est malade?

(1)

(b) Qu'est-ce que le docteur dit?
A1.2 Dites vrai ou faux. (4x1=4)

- (a) Caroline est la mère de Denis.
- (b) Denis a mal à l'estomac.
- (c) Paul téléphone à Denis.
- (d) Caroline a dix ans.

A1.3 Cochez la bonne réponse. (4x½=2)

- (a) Caroline va chez le
 - (i) professeur (ii) chanteur
 - (iii) docteur
- (b) _____ a une grippe.
 - (i) Docteur (ii) Denis
 - (iii) Caroline
- (c) Paul est un _____ de Denis.
 - (i) frère (ii) père
 - (iii) ami
- (d) _____ est malade.
 - (i) Paul (ii) Caroline
 - (iii) Denis

A2. Lisez.

La Bretagne

La Bretagne est une très belle région de l'ouest de France. C'est une péninsule bordée par la Manche de l'Atlantique. Le climat est influencé par l'océan : il fait doux et humide et souvent il fait du vent.

La Bretagne n'est pas une région très peuplée. Les habitants quittent cette belle région parce que l'agriculture ne permet pas de bien gagner la vie. Le tourisme est une ressource importante et essentielle. Il y a de belles plages sur la côte sud de Bretagne. Quand on visite la Bretagne il faut aller à Brest qui est aujourd'hui la ville la plus moderne de Bretagne. Saint Malo et Rennes sont deux autres villes importantes de Bretagne.

Bretagne est une région charmante connue pour ses crêpes et son cidre.

A2.1 Répondez. (2x1=2)

- (a) Quel temps fait-il en Bretagne?
- (b) Pourquoi les habitants de Bretagne, quittent-ils cette région?

A2.2 Trouvez du texte le contraire des mots suivants. (2x½=1)

- (a) laides ≠
- (b) ancienne ≠

A2.3 Dites vrai ou faux. (4x1=4)

- (a) La Bretagne se trouve à l'ouest de la France.
- (b) Saint Malo et Rennes sont deux villes importantes de Bretagne.
- (c) Le tourisme est une industrie importante de Bretagne.
- (d) La Bretagne a beaucoup d'habitants.

SECTION-B [EXPRESSION ÉCRITE]

B1. Comment fêtez-vous votre anniversaire? Dessinez aussi. (5)

B2. Décrivez. (2x2½=5)

- (a) Le salon
- (b) La cuisine

B3. Mettez le dialogue en ordre. (5)

L'élève : Et vos passe-temps favoris?

Le prof : Ça va bien. Qu'est-ce que tu fais?

L'élève : Bonjour monsieur.

Le prof : J'aime jouer au tennis et au basket-ball.

L'élève : Moi, j'aime jouer sur l'ordinateur.

Le prof : Au revoir.

L'élève : Je joue au cricket. C'est mon sport favori. Et vous monsieur, quel est votre sport favori?

Le prof : Bonjour mon enfant.

L'élève : Ça va?

Le prof : J'aime lire des romans. Et toi?

L'élève : Au revoir.

B4. Regardez et répondez.

(2+3=5)



- (a) (i) Qu'est-ce que c'est?
(ii) Combien d'étoiles y a-t-il?



- (b) (i) Que fait la femme?
(ii) Nommez quatre choses que vous voyez dans l'image.

SECTION-C [GRAMMAIRE]

C1. Choisissez la bonne réponse :

(10x½=5)

(a) J'aime _____ maison.

- (i) mon (ii) mes
(iii) ma

(b) Il va _____ Italie.

- (i) au (ii) en
(iii) à

(4)

- (c) Ils fêtent _____ anniversaire demain.
 (i) leur (ii) leurs
 (iii) son
- (d) Tu montres _____ photos.
 (i) ton (ii) tes
 (iii) ses
- (e) Elles mangent _____ viande.
 (i) du (ii) de la
 (iii) la
- (f) Ils n'aiment pas _____ fromage.
 (i) de (ii) le
 (iii) du
- (g) _____ acteur est beau.
 (i) cet (ii) ce
 (iii) cette
- (h) _____ fleurs achetez-vous?
 (i) Quels (ii) Quelle
 (iii) Quelles
- (i) Le chien est _____ la table.
 (i) au-dessous (ii) après
 (iii) sous
- (j) _____ femmes partent pour la France.
 (i) Cette (ii) Cet
 (iii) Ces

C2. Reliez les phrases en utilisant **et, parce que, mais, quand,** **si, puis, ou, donc.** (5x1=5)

- (a) **Henri achète un stylo, un livre; des gomm.**
- (b) **Vous voulez du gâteau; des tartes?**
- (c) **Je vais chez le docteur, j'ai de la fièvre.**

- (d) Il va au magasin; il va au rayon de jeans.
 (e) Il n'y a pas de crème; elle va à la crèmerie.
- C3. Mettez les phrases à la forme interrogative. (3x1=3)
 (a) Les filles vont au cinéma. (II)
 (b) Elle a deux frères. (III)
 (c) Cette actrice est célèbre. (I)
- C4. Mettez les verbes au passé composé. (3x1=3)
 (a) Il _____ (envoyer) le bouquet.
 (b) Vous _____ (connaître) Manuel dans cette salle?
 (c) J' _____ (écrire) des lettres.
- C5. Répondez négativement aux questions. (3x1=3)
 (a) Est-ce qu'il y a quelque chose dans ton sac?
 (b) Est-ce qu'elle voit quelqu'un?
 (c) Vous allez toujours au théâtre?
- C6. Conjuguez les verbes au présent. (3x1=3)
 (a) Elle _____ (lire) la journal.
 (b) Tu _____ (se lever) à 7h.
 (c) Nous _____ (savoir) jouer au basket.
- C7. Complétez avec des adverbes de quantité. (2x1=2)
 (trop de, peu de, assez de, beaucoup de etc.)
 (a) _____ cahiers achetez-vous?
 (b) Elle a _____ bonbons que sa sœur.
- C8. Retrouvez les phrases. (2x1=2)
 (a) Vous/vendu/avez/maison/la.
 (b) aller/en/Je/veux/Suisse.
- C9. Corrigez la faute : (2x1=2)
 (a) Nous ne pas faisons de tennis.
 (b) Pauline et Manuel joue dans le parc.

C10. Chassez l'intrus.

(2x1=2)

- (a) ce, ces, cet, ses
- (b) trop de, donc, plus de, assez de

SECTION-D [LA CULTURE ET LA CIVILISATION]

D1. Choisissez la bonne réponse.

(10x½=5)

- (a) Nice est :
 - (i) une montagne
 - (ii) une ville
 - (iii) un vin
- (b) La ville lumière, c'est :
 - (i) Lille
 - (ii) Paris
 - (iii) Lyon
- (c) Caroline aime :
 - (i) les ours en peluche
 - (ii) le roman
 - (iii) les livres
- (d) L'emblème national est :
 - (i) la tour Eiffel
 - (ii) Le buste de Marianne
 - (iii) le drapeau français
- (e) La France est entourée de _____ pays.
 - (i) dix
 - (ii) six
 - (iii) cinq
- (f) Napoléon Bonaparte est devenu général à _____ ans.
 - (i) 25
 - (ii) 24
 - (iii) 26
- (g) L'Union Européenne est un grand ensemble de _____ pays.
 - (i) vingt-sept
 - (ii) vingt-six
 - (iii) vingt-cinq

(h) _____ symbolise la fierté du peuple français.

(i) La vache (ii) Le coq

(iii) Le lion

(i) Le Président de la République est élu pour _____ ans.

(i) 15

(ii) 5

(iii) 8

(j) La Marseillaise a été écrite en _____

(i) 1792

(ii) 1795

(iii) 1799

D2. Répondez aux questions. (3x1=3)

(a) Combien de gares y a-t-il à Paris?

(b) Quelle est la profession d'Emilie?

(c) Pourquoi M. Lavigne, a-t-il téléphoné à son beau-frère?

D1. Dites vrai ou faux. (5x1=5)

(a) Mme. Lavigne a fermé toutes les portes.

(b) Taj Mahal est un monument en marbre.

(c) La famille Lavigne va à Lyon.

(d) Il faut arriver à l'école à l'heure.

(e) Manuel veut offrir un château à Caroline.

D4. Reliez : (4x½=2)

(a) Des montagnes (i) Le Rhin

(b) Des fleuves (ii) La France

(c) L'hexagone (iii) Le Jura

(d) Charles de Gaulle (iv) Le Président

HALF YEARLY EXAMINATION

10/2017

CLASS : VIII

SUBJECT : SOCIAL SCIENCE

Time : 3 hrs

MM : 80

General Instructions :

- (i) Read all the questions carefully and number the answers according to the questions.**
- (ii) Questions carrying 1 mark should be answered in one sentence.**
- (iii) Questions carrying 3 marks should be answered within 60-80 words.**
- (iv) Questions carrying 5 marks should be answered within 80-100 words.**
- (v) Attach the maps properly to the main sheet.**

Q1. Answer the following questions in one sentence each:

(6x1=6)

- (i) 'Mysore had grown in strength under the leadership of these two powerful rulers'. Name them.**
- (ii) Why did the architect make sure that the Viceroy's Palace was higher than Shah Jahan's Jama Masjid?**
- (iii) Define stock of resource.**
- (iv) Where is the world's first solar and wind powered bus shelter located?**
- (v) Name the law according to which sons, daughters and their mothers can get equal share in family property.**

- (vi) Which Fundamental Right is violated if a 13-year old child is working in a factory manufacturing carpets?
- Q2. What were the reasons for the decline of small trading centres that resulted in de-urbanisation in the late eighteenth century? (3)
- Q3. Why did the British preserve the official documents and how was this done? (1+2=3)
- Q4. List any three social reforms initiated by the British. (3)
- Q5. Why was grand Durbar organised in 1877? 'The British chose to hold it in Delhi although it was not the capital'. Give reasons. (1+2=3)
- Q6. Distinguish between renewable and non-renewable resources. (3)
- Q7. Define landslides. Write any two mitigation techniques of landslides. (1+2=3)
- Q8. 'This non-conventional source of energy is obtained from the heat energy of the earth'. Identify it and write its characteristics. (1+2=3)
- Q9. (i) Enlist any two factors on which the development of a resource depends.
(ii) Classify resources on the basis of origin. (1+2=3)
- Q10. (i) What do you understand by domestic violence?
(ii) List any two rights achieved by women through the 'Protection of Women from Domestic Violence Act'. (1+2=3)
- Q11. What is Parliament? Discuss its composition. (1+2=3)
- Q12. Briefly explain the problems faced by people while accessing the court. (3)

Q13. In what ways did the British change their policies after the Revolt of 1857? (5)

Q14. Explain the system of subsidiary alliance. (5)

Q15. Discuss the factors controlling soil formation. (5)

Q16. (i) How is the process of drilling different from quarrying in extracting a mineral.

(ii) 'Minerals are used in many industries'. Discuss. (2+3=5)

Q17. Write any five Fundamental Rights provided to the Indian citizens by the Constitution. (5)

Q18. (i) 'It is the apex court in India'. Identify it and write its features.

(ii) How are the different levels of courts connected to each other? (1+2+2=5)

Q19. Discuss the composition and functions of Rajya Sabha. (2+3=5)

Q20. Attempt the following maps :

(a) On the provided political map of India, name and mark the following : (3x1=3)

(i) Capital of Britishers after 1911

(ii) Portuguese base in India

(iii) State having deposits of gold in India

(b) On the provided political map of the world, name and mark the following : (3x1=3)

(i) Largest producer of diamond

(ii) Largest producer of high grade iron-ore

(iii) Continent from where British, Portuguese and French came

समय: - होरात्रयम्

पूर्णाङ्कः - 80

- निर्देशाः (i) अस्मिन् प्रश्नपत्रे चत्वारः खण्डाः सन्ति ।
(ii) प्रतिखण्ड - उत्तराणि पृथक् प्रदत्तायाम् उत्तरपुस्तिकायां लेखनीयानि ।
(iii) प्रत्येकं खण्डं अधिकृत्य उत्तराणि एकस्मिन् स्थाने क्रमेण लेखनीयानि ।
(iv) प्रश्नपत्रे उत्तराणि न लेखनीयानि ।
(v) प्रश्नसंख्या प्रश्नापत्रानुसारं अवश्यमेव लेखनीया ।
(vi) सर्वेषां प्रश्नानां उत्तराणि संस्कृतेन लेखनीयानि ।

खण्डः 'क' (अपठित-अवबोधनम्)

अङ्काः 10

प्र1. अधोलिखितम् अनुच्छेदं पठित्वा प्रदत्तप्रश्नानां उत्तराणि लिखत -

मानवजीवने छात्रजीवनं सर्वाधिकं महत्त्वपूर्णम् अस्ति । अस्मिन्नेव जीवने नरः भाविजीवनस्य निर्माणं करोति । अध्ययनकाले तस्य जीवनं सांसारिकचिन्ताशून्यं भवति । अतः तस्य चित्तम् आनन्दोल्लासेन परिपूर्णं भवति । बाल्यकाले बालकस्योपरि संसर्गस्य प्रभावो विशेषतया दृश्यते । यादृशैः बालकैः सह सः अनुचरति तादृशः एव सः भवति । अतः सज्जनानां सङ्गतिः सुखदा भवति । एतस्य विपरीतं यदि सः दुष्टबालानां सङ्गतिं करोति तर्हि स अपि दुष्टः भविष्यति । अतः छात्रावस्थाकाले सत्साहित्यस्य सद्ग्रन्थस्य च पठनम् अत्यावश्यकम् अस्ति । ये छात्रजीवने समयस्य सदुपयोगं कुर्वन्ति सदाचारजीवनम् आप्नुवन्ति च ते एव भाविजीवने अवश्यमेव सफलाः भवन्ति । समयः स्वल्पः अस्ति, कर्तव्यानि बहूनि सन्ति । अतः कदापि समयस्य दुरुपयोगं न कुर्यात् ।

I. एकपदेन उत्तरत -

(4x½=2)

- (i) सज्जनानां सङ्गतिः कीदृशी भवति?
(ii) कः स्वल्पः अस्ति?
(iii) मानवजीवने किं सर्वाधिकं महत्त्वपूर्णम् अस्ति?
(iv) तस्य चित्तं केन परिपूर्णम् भवति?

II. पूर्णवाक्येन उत्तरत -

(2x2=4)

- (i) छात्रावस्थाकाले कस्य पठनम् अत्यावश्यकम् अस्ति?
(ii) अध्ययनकाले तस्य जीवनं कीदृशं भवति?

III. निर्देशानुसारम् उत्तरत -

(4x½=2)

- (i) 'सः अपि दुष्टः भविष्यति' अत्र 'भविष्यति' क्रियापदस्य कर्तृपदं किम् अस्ति?
(ii) 'अस्मिन् जीवने' अनयोः पदयोः विशेषणपदं किम् अस्ति?
(iii) 'मनः' अस्य किं पर्यायपदम् अत्र प्रयुक्तम्?
(iv) 'दुरुपयोगम्' अस्य किं विलोमपदम् अत्र प्रयुक्तम्?

IV. अस्य गद्यांशस्य कृते समुचितं शीर्षकं लिखत ।

(2)

(C-1)

- प्र2. मित्रं प्रति लिखितं निम्नलिखितं पत्रं मञ्जूषायां प्रदत्तैः पदैः पूरयित्वा पुनः उत्तरपुस्तिकायाम् लिखत -
(10x½=5)

मञ्जूषा
शुभकामना, परीक्षायां, दिल्लीतः, राकेश, मित्रम्, ज्ञात्वा, तत्रास्तु, सदस्यानाम्, फलम्, मम

संस्कृतविद्यालयः

(i) _____

तिथिः _____

प्रिय मित्र (ii) _____

नमस्ते ।

अत्र कुशलं (iii) _____ । भवतः पत्रं पठित्वा ज्ञातं यत् भवान् (iv) _____ प्रथमं स्थानं प्राप्तवान् । इदं (v) _____ मम चित्तं प्रसन्नं जातम् । एतत् सर्वं तव परिश्रमस्य एव (vi) _____ अस्ति । मम गृहस्य सर्वेषां (vii) _____ पक्षतः भवते वर्धापनानि । भवान् उत्तरोत्तरं सफलताम् प्राप्नोत एषा अस्माकं (viii) _____ । मातृपितृचरणेषु (ix) _____ प्रणामाः । अनुजाय स्नेहराशिः ।

भवतः (x) _____

क. ख. ग.

- प्र3. अधः प्रदत्तं चित्रम् आधृत्य मञ्जूषायां प्रदत्तशब्दानां सहायतया पञ्चसंस्कृतवाक्यानि लिखत - (5x2=10)

मञ्जूषा
समीपे, मुनिः, पाठयति, आश्रमस्य, मृगौ, पादपाः, पुष्पाणि, खगाः,
आसने, विकसन्ति, भूमौ, शिलायां, पर्णकुटीराणि, स्थितः



(C-2)

- प्र4. अधोलिखितवाक्येषु रेखांकितपदेषु सन्धिं सन्धिच्छेदं वा कृत्वा पुनः पूर्णवाक्यं लिखत - (4x1=4)
- अद्य + एव त्वं तत्र गच्छ।
 - स्वागतम् भव।
 - तत्र अनेके जनाः प्रति + ईक्षां कुर्वन्ति।
 - तत्र एकः भोजनालयः अस्ति।
- प्र5. निम्न-उपसर्गान् धातून् च संयोज्य विभज्य वा लिखत - (4x1=4)
- बालकः गृहात् निर्गच्छति।
 - दुष्टः सज्जने प्र + ह।
 - आकाशे कपोतः उत् + पत्।
 - सः उद्यानात् पुष्पाणि अवचिनोति।
- प्र6. (क) अधोलिखितवाक्ययोः रेखांकितपदस्य प्रकृति-प्रत्ययौ पृथक् पृथक् कृत्वा अथवा संयोज्य पुनः वाक्यानि लिखत - (2x1=2)
- बालकः मेलकं द्रष्टुम् गच्छति।
 - लता हसु + तुमुन् समर्था न अस्ति।
- (ख) तुमुन् प्रत्ययं संयोज्य वाक्यसंयोजनं क्रियताम् - (2x1=2)
- वयं प्रतिदिनं भ्रमामः। वयं उद्यानं गच्छामः।
 - छात्रा पठति। छात्रा पुस्तकालयं गच्छति।
- प्र7. कोष्ठगतशब्देषु उचितविभक्तिं प्रयुज्य वाक्यानि उत्तरपुस्तिकायां लिखत - (4x1=4)
- माता _____ स्निहयति। (पुत्र)
 - _____ उभयतः वृक्षाः सन्ति। (आपण)
 - _____ नमः। (शिव)
 - _____ अधः एकः पथिकः उपविशति। (वृक्ष)
- प्र8. उचितशब्दरूपैः रिक्तस्थानानि पूरयित्वा वाक्यानि पुनः लिखत - (4x1=4)
- सा प्रातः उत्थाय _____ अनमत्। (पितृ - द्वितीया विभक्तिः, एकवचनम्)
 - हे _____। अहं नमामि। (नदी)
 - _____ पिता कृषकः अस्ति। (अस्मद्)
 - _____ कुत्र गच्छसि? (युष्मद्)
- प्र9. उचितधातुरूपैः रिक्तस्थानानि पूरयित्वा वाक्यानि पुनः लिखत - (5x1=5)
- ते क्रीडितुम् न _____। (इष्)
 - त्वम् प्रातः व्यायामम् _____। (कृ - लोट् लकारे)
 - शिक्षकः अध्यापनं _____। (कृ)

(iv) पाकशालायां स्त्री ओदनं _____ । (पच् - विधिलिङलकारे)

(v) श्वः आवां उद्यानं न _____ । (गम्)

खण्डः 'घ' (पठित-अवबोधनम्)

अङ्काः ३३

प्र10. अधोलिखितं गद्यांशं पठित्वा प्रदत्तप्रश्नानां उत्तराणि लिखत -

(5)

सिंहः अचिन्तयत् - "नूनम् एतस्यां गुहायां रात्रौ कोऽपि जीवः आगच्छति। अतः अत्रैव निगूढो भूत्वा तिष्ठामि" इति। एतस्मिन् अन्तरे गुहायाः स्वामी दधिपुच्छः नाम शृगालः समागच्छत्। स च यावत् पश्यति तावत् सिंहपदपद्धतिः गुहायां प्रविष्टा दृश्यते, न च बहिरागता। शृगालः अचिन्तयत् - "अहो विनष्टोऽस्मि। नूनम् अस्मिन् बिले सिंहः अस्तीति तर्कयामि तत् किं करवाणि?"

I. एकपदेन उत्तरत -

(2x½=1)

(i) गुहायाः स्वामी कः आसीत्?

(ii) सिंहपदपद्धतिः कस्यां प्रविष्टा दृश्यते?

II. पूर्णवाक्येन उत्तरत -

(2x1=2)

(i) शृगालः किम् अचिन्तयत्?

(ii) गुहायां रात्रौ कः आगच्छति?

III. यथानिर्देशम् उत्तरत -

(4x½=2)

(i) 'दिने' अस्य किम् विलोमपदम् अत्र प्रयुक्तम्?

(ii) 'तिष्ठामि' क्रियापदस्य कर्तृपदं किम् अस्ति?

(iii) 'एतस्यां गुहायां' अनयोः पदयोः विशेषणपदं किम् अस्ति?

(iv) 'गुहायां' अस्य किम् पर्यायपदम् अत्र प्रयुक्तम्?

प्र11. अधोलिखितं पद्यांशं पठित्वा प्रदत्तप्रश्नानाम् उत्तराणि लिखत -

(5)

लुब्धस्य नश्यति यशः पिशुनस्य मैत्री

नष्टक्रियस्य कुलमर्धपरस्य धर्मः।

विद्याफलं व्यसनिनः कृपणस्य सौख्यं

राज्यं प्रमत्तसचिवस्य नराधिपस्य ॥

I. एकपदेन उत्तरत -

(2x½=1)

(i) यशः कस्य नश्यति?

(ii) पिशुनस्य का नश्यति?

II. पूर्णवाक्येन उत्तरत -

(2x1=2)

(i) कस्य राज्यं नश्यति?

(ii) कृपणस्य किं नश्यति?

III. यथानिर्देशम् उत्तरत -

(4x½=2)

(i) 'नृपस्य' अस्य किं पर्यायपदम् अत्र प्रयुक्तम्?

(ii) 'अधर्मः' अस्य किं विलोमपदम् अत्र प्रयुक्तम्?

(C-4)

(iii) 'कीर्तिः' इति अर्थे किं पदम् अत्र प्रयुक्तम्?

(iv) 'पिशुनस्य मैत्री नश्यति।' अत्र 'मैत्री' कर्तृपदस्य क्रियापदम् किम् अस्ति?

प्र12. अधोलिखितं संवादं पठित्वा प्रदत्तप्रश्नानां उत्तराणि लिखत -

(5)

स्वरा - (मध्ये एव) महोदये! मे भगिनी कथयति यदस्माकं देशे अष्टाविंशतिः राज्यानि सन्ति।
एतदतिरिच्य सप्त केन्द्रशासितप्रदेशाः अपि सन्ति।

अध्यापिका - सम्यग्जानाति ते भगिनी। भवतु, अपि जानीथ यूयं यदेतेषु राज्येषु सप्तराज्यानाम् एकः
समवायोऽस्ति यः सप्तभगिन्यः इति नाम्ना प्रथितोऽस्ति।

सर्वे - (साश्चर्यम् परस्परं पश्यन्तः) सप्तभगिन्यः? सप्तभगिन्यः?

निकोलस - इमानि राज्यानि सप्तभगिन्यः इति किमर्थं कथ्यन्ते?

अध्यापिका - प्रयोगोऽयं प्रतीकात्मको वर्तते।

I. एकपदेन उत्तरत -

(2x½=1)

(i) अस्माकं देशे कति राज्यानि सन्ति?

(ii) अत्र सप्त के सन्ति?

II. पूर्णवाक्येन उत्तरत -

(2x1=2)

(i) निकोलसः किं प्रश्नं पृच्छति?

(ii) सर्वे किं कथयन्ति?

III. यथानिर्देशम् उत्तरत -

(4x½=2)

(i) 'इमानि राज्यानि' अनयोः पदयोः विशेषणपदं किम् अस्ति?

(ii) 'भगिनी' कर्तृपदस्य क्रियापदम् किम् अस्ति?

(iii) 'प्रसिद्धः' इति अर्थे कः शब्दः अत्र प्रयुक्तः?

(iv) 'युष्माकम्' अस्य किम् विलोमपदम् अत्र प्रयुक्तम्?

प्र13. अधोलिखित-श्लोकस्य अन्वयम् उचितक्रमेण पूरयित्वा उत्तरपुस्तिकायां पुनः लिखत -

(4x1=4)

महतां प्रकृतिः सैव वर्धितानां परैरपि।

न जहाति निजं भावं संख्यासु लाकृतिर्यथा ॥

अन्वयः - परैः वर्धितानाम् (i) _____ महतां (ii) _____ सा एव (भवति)। यथा (iii) _____

लाकृतिः निजं भावं न (iv) _____।

प्र14. अधोलिखितकवनेषु रेखांकितपदम् आधृत्य प्रश्ननिर्माणं कुरुत -

(4x1=4)

(i) इयं सामान्या पाठशाला नास्ति।

(ii) सा फीडितजनानाम् सेवाम् अकरोत्।

(iii) मानवाः अस्माकं फलानि खादन्ति।

(iv) शृगालः इमं श्लोकम् अमठत्।

प्र15. अधोलिखितवाक्यानि घटनाक्रमानुसारेण पुनः लिखत -

(8x½=4)

- (i) चञ्चलः नदीजलं वृक्षं च अपृच्छत्।
- (ii) चञ्चलः नाम व्याधः आसीत्।
- (iii) व्याघ्रः जाले अपतत् प्राणभिक्षाम् च अयाचत।
- (iv) एकदा तस्य जाले एकः व्याघ्रः बद्धः आसीत्।
- (v) जाले बद्धं व्याघ्रं दृष्ट्वा प्रसन्नः चञ्चलः गृहं प्रत्यागच्छत्।
- (vi) व्याघ्रः अवदत् - अहं त्वां खादिष्यामि।
- (vii) चञ्चलः लोमशिकां सर्वा वार्ता कथयति।
- (viii) लोमशिका व्याघ्रम् कथयति - जाले पुनः प्राविशत्।

प्र16. अर्थैः सह शब्दानाम् मेलनं कृत्वा उत्तरपुस्तिकायाम् पुनः लिखत -

(6x½=3)

शब्दाः	अर्थाः
उपसृत्य	निरन्तरम्
अनारतम्	शब्दः
नूतनानाम्	चित्ते
स्वः	समीपं गत्वा
मनसि	विशालानि
बृहत्तराणि	नवीनानाम्